



WMAIAnews

Newsletter of the Western Massachusetts Chapter of the American Institute of Architects

Citizen Architects

by Erika Zekos Associate AIA

We have come to expect the AIA to be the voice of the architecture community on a national level, representing the interests of architects before the policy-making departments of the federal government. The AIA lobbies for sustainable design, tax incentives and funding for construction projects. This fall the Congress will be voting on the Energy Efficient Commercial Buildings Tax Deduction and the 21st Century High-Performing Public Schools Facilities Act. You can bet that the AIA is working on behalf of these bills. The AIA is also making sure that the presidential candidates are aware of the major issues facing the design and construction of our built environment. Design Vote (<http://www.aia.org/designvote>) was created to keep its membership aware of candidate positions and provide ways to get involved.



The education and outreach capacity of the AIA is also considerable at the state and even local levels. AIA teams with the national Association of Counties and the US Conference of Mayors as well as provides position papers available for download on a range of subjects (including Green Building Programs, Green Affordable Housing, Expedited Permitting and Smart Growth/Transit-Oriented Development).

One of the key initiatives of the AIA has been to promote the idea that architects get involved politically by serving in elected and appointed offices at the local level. Here in western MA there are a great number of individuals in our chapter who have chosen to serve in their town or region. For this article we'll focus on just a few. **Mark L. Sirulnik AIA** is a retired architect. He has just completed two terms on the Longmeadow Historic District Commission. He is currently in his second term on the Longmeadow Zoning Board of Appeals, and was recently appointed to the Longmeadow High School Building Committee. **Ludmilla Pavlova AIA, LEED A.P.** is a Senior Facilities Planner at UMass Amherst. She has served on the Town of Amherst Design Review Board for six years, and is currently serving a three year term on the town's Planning Board. **Robert S. Haveles AIA** is one of two founding partners of Architectural Insights in Palmer and was, most notably, Former Palmer Town Councilor (First Council President), Former Member of the Town of Palmer

continued on Page 4

Inside

Citizen Architects 1

OUR NEWS

Going Green Eh? 2
 Architects' Day on Beacon Hill ... 2
 In Memoriam 3
 Marketing News 3

IN THE GALLERIES 5

COMPETITIONS 5

MISCELLANEOUS 6

ARE Study Group 6
 Welcome 6
 Center for Ecological Technology 6
 Architecture on TV 7

CONFERENCES/PROGRAMS

A Call To Action 8
 Fall Cohousing Tour 8
 Sustainability and the Built World 8
 Bauhaus Modern 9
 LOOK! 9
 Williams College 10
 Green Buildings Open House 10
 Self-Reporting Learning Units ... 10
 Green Building Materials '08 10
 Greenbuild 2008 10
 Build Boston 10

TRAVEL 11

IN THE WORKS 12

WMAIA PROGRAMS 14

OUR NEWS

Going Green Eh?

Bruce Coldham AIA and Thomas RC Hartman AIA of Coldham & Hartman Architects are collaborating with Marc Rosenbaum (Energysmith) and Terry Brennan (Camroden Associates) to tour and document the best of Eastern Canada's high performing buildings. The trip, dubbed the "Green Maple Tour" will begin in Niagara and end in Ottawa and will launch at the end of October. The group will visit over 20 buildings along the way and will meet with top Canadian design professionals. We can only hope that these four will represent the USA (and Australia?) well during their tour and will come back full of inspired design solutions and Molson...eh? If you would like to learn more about their adventures feel free to visit: <http://delicious.com/GreenMapleTour>. This site has links to all the buildings on the tour, architects and engineers involved and a map of their projected route.

Architects' Day on Beacon Hill

by Martha Montgomery AIA

In April, several dozen architects convened for the 2008 "Architects' Day on Beacon Hill". This annual lobbying event is a very effective tool for outlining our concerns and creating relationships with our legislators, asking them to consider the issues affecting architects and the built environment. Each year we take three or four pertinent topics to our representatives, explaining our support or opposition, after a briefing by the BSA's Legislative Affairs Committee (LAC). I paraphrase the support of this year's issues as follows:

1. Reforming the State Building Code adoption process

The involvement and input of legislators in this collaborative process, with the goal of creating:

- a State Building Code that is clear, scientifically based and internally consistent;
- a process for modifying regulation that is efficient, apolitical and transparent.

2. Stimulating the Creative Economy

• **HB 4309: The Massachusetts Creative Economy Council**

To develop a statewide strategy for the enhancement, encouragement and growth of the creative economy in the Commonwealth by promoting responsive public policies and innovative private sector practices.

• **HB 393: Creative Challenge Index in Public Schools**

The Creative Challenge Index will establish incentives for schools to foster creative skills through arts education and other creative educational opportunities.

3. Bond Bills support the state's environment and infrastructure

• **HB 4561: The Environmental Bond Bill**

The Environmental Bond Bill is the single most important environmental bill to be considered by the Legislature. Projects funded through the Environmental Bond directly affect communities across the state by protecting natural areas, safeguarding water quality, restoring rivers and streams, providing for dam removal, supporting working farms, building our economy and improving our quality of life.

• **HB 4280: Higher Education Bond Bill**

This bill sets forth the appropriation and

authorization language for bonding up to \$2 billion for a program of capital improvements to public higher education institutions in the Commonwealth, with \$1 billion for projects at the State and Community colleges and \$1 billion for the University of Massachusetts system.

4. Supporting Renewable Energy, Green Building and the Reduction of Greenhouse Gas Emissions

With Governor Patrick's Executive Order in April 2007, which requires that by the year 2020 state agencies will reduce energy use in buildings to 40% of current levels and get 15% of their energy from renewable sources, and with a statewide task force being convened to study net-zero-energy construction, the Massachusetts Chapters of the American Institute of Architects and the Boston Society of Architects (BSA) have strongly advocated for legislative initiatives that would serve to "mainstream" high-performance or "green" building technology. The Governor has recently included several BSA members on his "Net Zero Energy Task Force".

The Green Building Tax Credit , (HB 3024, Rep. Marzilli), an Act that has been a major focus of our advocacy efforts over the past several years, was not included by amendment to these bills. We are nonetheless very supportive of many sections within this legislative package. These sections include:

- **Commonwealth Commission:** This amendment establishes a special statewide Commission chaired by the Lieutenant Governor that will develop a Green Building Plan for the Commonwealth. We are very pleased that the BSA will have a representative on this Commission along with the

continued on Page 13

In Memoriam

by John Kuhn AIA

I never think of bookkeepers or accountants as happy-go-lucky people. They're crunching numbers and sending bills, writing checks and doing payroll. What's there to smile about? (Or else finance types are really wild and crazy people and I had just never noticed. But I don't think so.) But Janice Wood, our financial manager and colleague for eight years was an exception to that rule.

Managing the finances of a business is one of those roles that you don't notice when it's being done well. Janice was always under the radar because things ran so smoothly around here, at least in respect to finances. She did her job and she did it well. And she always did it – always – with a smile on her face. And she had a great smile – the kind that lights up a room and comes from deep within. She could always find the bright side of things – even accounts receivable or bad debts. She embraced life and embraced her job; and seemed joyful about sharing the latest balance

sheets or profit and loss statements. She was a very special person.

Janice was diagnosed with an extremely aggressive cancer in the first week of August and passed away on August 27th. Her loss has left a huge hole in our office. We are like a family – a big family – and losing one of our members hurts. We've all coped with her loss, with our loss, in different ways. To lose someone so bright, so happy and so full of life in such a short period of time leaves a void that will be hard to fill in the days, months and years to come. But she would admonish us, if she could, and tell us to think of her fondly, and not to forget to turn in our timecards on time.

I was erasing my saved voicemails this morning, and suddenly I heard Janice's voice. The date was August 2nd. I had called her at home with a question; she had called back and left me an answer on my voicemail. I'm not sure now why I had saved it. I listened to her message and was overcome with a mixture of feelings. I was reminded again that she was gone; but I was so happy to hear her smiling voice again. It is one voicemail that I am going to keep in my voicemail inbox for a long, long time.



Grand Chorale Synagogue
St. Petersburg, Russia
photo by Kerry Dietz AIA

Marketing News

Julie Waggoner, CPSM, Assoc. AIA, is co-authoring a series of bi-monthly articles for Marketer magazine during 2008. Marketer is a national magazine published by the Society for Professional Marketing Services (SMPS), an organization of professional marketers in the architectural and engineering professions. Waggoner is the principal of MicaBlue Creative in West Whatley, MA, a marketing and graphic design firm in business since 2005. Her co-author and colleague is Bernie Siben, CPSM, a marketing consultant based in California.

WMAIA NEWS

The Western Mass. Chapter of the American Institute of Architects publishes WMAIA NEWS four times a year. It is circulated to all members, advertisers and subscribers.

Please direct all newsletter correspondence to Erika Zekos, Associate AIA, Editor, Studiozed, 40 Hulst Road, Amherst MA 01002 (617) 388-3994, studiozed@comcast.net

Articles, photos, notices of events and other information are welcome.

Opinions expressed in the newsletter are not necessarily those of the WMAIA. The Editor reserves the right to reject or revise material as space and subjective opinion permit.

President:

William Austin AIA

President-elect:

Thomas RC Hartman AIA

Secretary:

Christopher Farley AIA

Treasurer:

Thomas RC Hartman AIA

Executive and Program Director:

Lorin Starr Affiliate AIA

Editor, WMAIA News:

Erika Zekos Associate AIA

Members:

Erica Gees AIA

Warren Hall Associate AIA

Martha Montgomery AIA

Sigrid Miller Pollin AIA

Michael Luft-Weissburg AIAS

Stephen Schreiber FAIA

Jeremy Toal AIA

Julie Waggoner Associate AIA

For more information on WMAIA Chapter, please contact Lorin Starr Affiliate AIA, Executive Director, director@wmaia.org.

Citizen Architects continued from Page 1

Town Councilor (First Council President), Former Member of the Town of Palmer By-Laws Committee, but has also served on numerous boards and committees in his community over the last 29 years. **Tristram W. Metcalfe III AIA NCARB** is the sole proprietor of Metcalfe Associates of Northampton and has been on the Northampton Historical Commission for nineteen years. **Tracie Reed AIAS**, a graduate student in UMass Amherst's M.Arch program, is involved in another way. She has volunteered on several campaigns, including our gubernatorial race. She also served as a Gore Delegate in 2002 and this May ran and was elected as an Obama Delegate representing Maine. As one of Maine's four elected Electoral College members she'll be casting one of Maine's four official votes (if Obama wins in November).

It makes sense that architects feel a desire to participate. Tracie pointed out that politicians and architects might not be all that different. While the result of political work isn't a tangible, built structure, both groups of professionals work in collaboration with many constituencies and both design ways to strengthen communities through problem solving. "It's one of the reasons' why I think a lot of politicians, including Barack Obama, Joe Biden and Deval Patrick all site that their dream job is to be an architect (<http://www.abqtrib.com/news/2007/apr/30/even-presidential-candidates-have-their-dream-jobs/>), Deval told me it was his dream job when I told him at the Portland Caucus (where he was stumping for Barack) that I was an architecture student at UMass."

Reasons for getting involved in local politics vary widely, but the underlying theme in this western MA group is a desire to contribute in a meaningful way to the betterment of the community. Tristram mentioned that "increasing public awareness is key." While for

Bob, personal reasons inform his civics. "Although my dad passed away when I was 14, I remember he was very involved in the community by serving on the Finance Committee, Building Committee for the Town Administration Building and being involved in the church, thus there were evenings that I recall he was off to one of those meetings. I think these values were passed on to me. Over the years I had heard how respected my dad was in town and I guess although he is not here, I subconsciously did not want to let him down, and continue with being community minded."

Being an architect can bring a unique perspective to the public dialogue. Mark noted that he has the ability to educate fellow board members regarding Historic Preservation and Zoning issues and Tristram feels that it is his duty to educate the public as well to look beyond their "personal aesthetic appreciations". Pointing out that the very WAY architects work is a benefit in itself, Ludmilla said, "An architect is trained in problem solving; therefore I feel I contribute the ability to translate between different languages and points of view in a way that brings clarity and vision to articulating alternatives and developing solutions to complex problems."

It's undeniable that their architectural expertise has directly impacted their political experience. Longmeadow has a new set of graphic support requirements that applicants appearing before the ZBA must fulfill thanks to Mark. Ludmilla cites that her experience allows her to speak her position on a proposal, and, more importantly, to articulate constructive suggestions and to work with diverse constituencies to build not only an appropriate building, but one that the community supports as well. In Palmer, Bob was on board as the town shifted to a new form of government. He was able to weigh in on issues of infrastructure and planning at a critical time.

Most of those interviewed have had a positive experience participating in political boards and committees. Fellow board members have welcomed their knowledge, they've felt good about their service and feel a deep sense of pride in making the world a better place. Frankly, it's also good advertising if your name is in the public eye. But frustrations were also cited. Bob had to resign his post as Town Councilor of Palmer due to the State statute that prohibits conflict of interest. In order to participate in local politics his office would have had to decline any work in his own community. And in

Editor's Note:

*An impressive number of other design professionals in western MA serve in civic positions as well. Here is the list of those that we know of: **Jonathan Salvon AIA** was just appointed to the Amherst Planning Committee, **Lorin Starr Affiliate AIA** is a library trustee and a member of the Permanent Building Committee in Sunderland, **Chris Farley AIA** is on the Planning Board in Ashfield, **Joseph Mattei AIA** is on the Zoning Board in Greenfield, **Bill Devlin AIA** is president of the Springfield Preservation Trust and **Brian DeVries** is a selectman in Shelburne. **Tom RC Hartman AIA** is on the Pelham Historical Commission. **Bruce Coldham AIA** is on the Governor's Zero Energy Task Force that will wind up in March 2009, and is a past member of the Amherst Planning Board. **Anita Licis Ribak Associate AIA**, serves on the Amherst Design Review Board. **Erica Rioux Gees AIA** is a member of the Pioneer Valley Regional Planning Commission – Valley Development Council. **Chris Riddle AIA**, was an elected Town Meeting Member in Amherst from 2002 to 2007. If you serve and we missed mentioning you please let us know at studiozed@comcast.net!*

Northampton, despite Tristram's efforts, "it has been very frustrating to see great examples of architecture be destroyed simultaneous to seeing more poor design work expand."

What do our local citizen architects think of the AIA's charge that more architects get civically involved by serving in elected and appointed offices in their hometowns? Not surprisingly, they all agreed that it's a good idea to serve, but for various reasons. Everything from educating the public about aesthetics and building codes, to resuscitating the reputation of the profession itself was mentioned. Ludmilla believes, "that any individual that has experience in communicating across multiple disciplines and multiple stakeholders has the experience and ability to run for elected office. Architects are particularly well suited for this because their training and standards of practice already embody a philosophy and methodology that aspires to improve the common good."

IN THE GALLERIES

Architectures of Finance

through December 21
MIT Museum Compton Gallery
(Building 10-150, 77 Mass.
Ave., Cambridge).

During a year-long residence at MIT's Center for Advanced Visual Studies, designer Damon Rich, founder of the Center for Urban Pedagogy, surveyed the darkening realm of real estate markets from foreclosures to the obscure history of the mortgage (Old French for "death vow"). Red Lines - his installation of models, photographs, videos and drawings - explores the relationship between finance and architecture. Learn more http://web.mit.edu/arts/announcements/prs/2008/0826_RedLines.html

Of People and Places

through December 14
University Gallery,
UMass Amherst

This exhibition combines work by young, emerging artists with work by those who are more internationally renowned. Their images are very personal diaries of a place, exploring the evolving relationship between people and nature, rural and urban, old and new, timelessness and change, natural and artificial. It is the balance between these contrasts that lends these bodies of work a highly contemplative feel.

COMPETITIONS

Can You Delineate? Zero Energy Award

For 34 years, The KRob Ken Roberts Memorial Delineation Competition has celebrated the best in delineation (architectural drawing). Open to architecture students, professionals and architectural illustrators. Both hand and digital delineation accepted. All entries must be received by October 24, by 5:00pm CST. More info and images of past winners at www.krobarch.com.

Cedar Competition

The Cedar Shake & Shingle Bureau invites entries into the Western Red Cedar Architectural Awards. Call for Entries closes October 31. For more info please visit: <http://construction.com/community/cedarawards.asp>.

A search for the best building in the Northeast that produces as much energy as it consumes. As an incentive for design/build teams, NESEA will offer a \$10,000 cash prize for the best building in the Northeast that can document net-zero energy use while offering a high level of comfort, affordability and reliability.

Eligible buildings must be occupied and document net-zero energy use for one year. The competition is open to occupied buildings in the Northeast - the six New England states plus NY, NJ, PA, DE and MD. Winners will be announced at the Building Energy Conference and Trade Show in March.

Entries are due on January 15, 2009 and

will be judged by a panel of distinguished experts in the fields of green building and renewable energy.

Find out more information and register at <http://zeroenergybuilding.org/index.php>.

Landmark Design

P&G/Gillette Landmark Design competition is accepting registration until October 6 for its single-phased competition for a signature sculpture or landmark to mark entry into its complex in South Boston. Designs should reinforce the corporate identity, enhance the newly designed campus and contribute to the community. For details or to register, visit www.gilletedesigncompetition.com.

MISCELLANEOUS

ARE Study Group

by Caroline Petrovik

Architectural Registration Exam (ARE) study groups are common in most areas of the country.

Today, exams can be taken at any time of the year instead of two dates per year as in the past. This leaves intern architects often feeling isolated and unsupported. Study groups give a structure to the exam scheduling and encourage interns to finish the exams in a predetermined amount of time.

ARE study groups available through the BSA typically are comprised of six to ten intern architects each. The groups get together to study, offer support, and share study materials. Team members must be authorized to join the study groups through an administrator. Teams are then formed according to availability and the proposed schedule and sequence. Teams meet as often as they find necessary and no less than once before each exam.

Team members each sign letters committing them to attend meetings and to take exams with the group. Teams pledge to continue to support each other until all members have passed all exams. Each group is responsible for determining the sequence and frequency of their exams.

These groups have a common library of study materials that are checked out and shared by all individuals involved. Team leaders are responsible for ensuring that study materials are properly taken care of and returned. The BSA provides: Kaplan Study Guides and Q/A books, Kaplan CDs, and Archiflash flashcards. A deposit of \$100 is given to the BSA by each member and is refunded once all of the exams have been taken and/or the study materials are returned for the last time.

As someone who is preparing for these exams, I would find these groups incredibly helpful. A similar system could be set up in Western MA using the BSA's ARE Success Teams as a model. I would be willing to organize these groups if others are interested in them. We may find that the WMAIA would be willing to help if we get things started and create enough interest.

If you feel that you could benefit from being a part of a group, are interested in mentoring a group, or if you have used ARE 4.0 study guides that you want to sell to me, please contact me at caroline@coldhamandhartman.com.

Center for Ecological Technology

by Erika Zekos Associate AIA

It's not a stretch to suggest that as a WMAIA member, you are trying to "green" your projects, and that you are learning more each week about sustainable design. But do you know about CET? I recently sat down to talk with Peggy Macleod and Megan McDonough to get the inside scoop. Peggy is the Marketing Director of CET and Megan is the Builder Services Administrator, the first point of contact for designers.

CET (or the Center for Ecological Technology) is in its 32nd year of helping designers, builders and homeowners unravel the complexities of sustainable design. With their main office in Pittsfield and another in Northampton, CET's 45 staff serve the four counties of the WMAIA chapter and assist occasional projects in New York and Connecticut as well. A great deal of their work is about providing

environmental education, including about waste management and recycling as well as energy efficiency.

CET is a "third party" organization and will help to certify projects for EnergyStar or LEED. CET started certifying homes for EnergyStar rating in 2003 and has piloted the LEED for Homes program since 2005. Third party inspection is a valuable tool. Homeowners appreciate it because they can know that their house is truly green, "What the buyers see isn't inside the walls, but that's where a lot of the decisions are most important." says Peggy. "How can you hold contractors and sub contractors feet to the fire if you don't make it clear that the goal is certification." Homeowners don't want to say that their house is "greenish".

CET wants you to know that architects don't need to be independent experts in energy ratings. They have expertise working in many scenarios and if you've got a design challenge, they've probably come up with a solution already. CET also helps designers to understand recent changes and subtleties of the energy code (a requirement that all ducts be insulated and sealed with mastic, for example is often overlooked). Getting clear product choices written into the specification also helps builders to deliver accurate bids.

It's best when designers come to CET long before the project goes out to bid. When plans are in the schematic design phase it's time for a first meeting. The CET energy rater inputs your specs in the REM Rate modeling program to model the building. Here you can see how it compares to various energy codes and find the BTU's per square foot. "What ifs" happen here too. Modifying the model can help you to understand where changes should be made for best overall efficiency. You can balance costs

against the effectiveness of different types of windows or insulation, for example.

If the goal is EnergyStar rating then that's the end of preconstruction interaction. CET will visit the site during construction to inspect the insulation and fill out the 16 point Thermal Bypass Checklist. They will also visit the project after construction is complete.

If your intention is to LEED certify your project then the process begins with a feasibility meeting to review the prerequisites for LEED. The project team needs to choose which points they want to pursue.

There are points available for building longevity, for example and CET can help you to develop a durability plan. There are also points available for integrated project teams so having everyone on board early in the process can be effective. The project is reviewed and modeled through the design and CET does at least two inspections during construction.

CET also reaches out to work with other organizations such as the Homebuilders Association. They are also expanding to work with Earth Advantage. Like LEED, this program uses EnergyStar for the energy requirements, but is billed as a more builder friendly program. Another of their initiatives is working with utility companies and the cities of Lenox and Northampton to make EnergyStar the minimum building code requirement. Incentives will be made available upon certification. In addition, the ReStore (another of CET's sites) is expanding soon and will be looking to renovate an existing building, it'll be LEED certified, of course.

Staff at CET regularly review available and new technologies. They have a great deal of knowledge based on building testing and history with so many clients and can advise about types of systems,



"I've been working with Beth Paulson at CET on the LEED-H certification process for our house. It can be a daunting process but both she and the team at CET have been incredibly knowledgeable resources during the tracking of credits, clearing up 'grey' areas, and verifying work completed. I look forward to many more LEED-H certified projects with CET."

~ Maria Chao AIA
photo by Maria Chao AIA

but they don't promote particular brands or products.

It's not all about technologies and paperwork, however. When asked what she would recommend as the most valuable energy saving technology or design decision, Peggy responded with this challenge, "Make it smaller."

Find out more about CET or get in touch with them at www.cetonline.org.

Architecture on TV

In August the Sundance Channel began airing Architecture School, a six-part reality TV series about students who are helping rebuild post-Katrina New Orleans. The show focuses on 12 students in Tulane University's design-build program, URBANbuild, as they conceptualize and construct a 1,200-square-foot house for a low-income family. Watch online at <http://www.sundancechannel.com/architecture-school#> for a totally addicting trip down memory lane.

Welcome

Jim Middlebrook will be the instructor of the architectural studios at Smith College for the 2008-2009 academic year. He has also taught at Barnard College and Kansas State University. He obtained his Master of Architecture degree from Columbia University and an undergraduate architecture degree from the University of Virginia, before working in the architectural offices of Rafael Vinoly, Rockwell Group, and Kohn Pederson Fox. His role has primarily been project designer and project architect for numerous architectural project types and several high profile buildings, including the Museum of Modern Art in New York City and the Cleveland Museum of Art in Ohio. His academic projects and artwork have been exhibited in New York City, New Jersey, Virginia, Kansas, and Florence, Italy.

CONFERENCES / PROGRAMS

A Call To Action: The Affordable Zero-E Challenge

Approaching Affordable Zero Net Energy Homes for All

by Jeremy M. Toal AIA, LEED AP

Attention Western MA Architects and Designers: I need your help with a project that will help put the western MA architectural community in the lead role in transforming our market around affordable zero-energy homes.

The intent of the project is to show that sustainable, zero net energy homes can be made affordable, today. The concept is to form a design committee comprised of several Western MA architects, designers, and students, builders from the Home Builders Association of Western, MA (HBA-WM), and stakeholders from Greater Springfield Habitat for Humanity, to design a home based on the standard Habitat for Humanity house program - 3 bedrooms, 1 bathroom, approximately 1,000 sq. feet.

We will implement an integrated design process, collaborating as a group to produce a complete design for a home as close to zero net energy as possible. The Homebuilders (HBA-WM) have requested that their NAHB Model Green Home Building Guideline be utilized as a framework, and I believe Energy-Star and possibly LEED certification could also be pursued.

WMAIA will organize periodic design reviews and critiques, and will solicit the expertise of the membership to help guide the project. Membership participation during construction will also be appreciated. Multiple sites / design teams may be considered if participation is strong.

I want this project to expose as many people as possible (read: community, market, future homebuyers, future workforce...) to the technologies, systems, materials, and design concepts and to demonstrate that beautiful, healthy, affordable, zero-energy homes are not a distant dream. I believe that consumers only need to know what works (real data, costs, benefits) and what to ask for, to begin to affect a significant shift in the home construction and renovation market.

Anyone interested in learning more about the project or in participating should contact Jeremy Toal at jeremyt@dietzarch.com or 413-522-1811. Don't wait...we'll be starting the design process in the next few weeks, with the goal of completing Schematic Design by mid December. Thanks!

Fall Cohousing Tour

Sunday, October 26

Come join us for a fall tour of four cohousing communities led by Laura Fitch AIA, a cohousing architect and 14-year resident of Pioneer Valley Cohousing in Amherst. We will travel by bus and visit Camelot Cohousing and Mosaic Commons, two new developments in Berlin, MA, then move on to tour Jamaica Plain Cohousing and finish up at New View in Acton. The tour meets and ends at the Riverside MBTA station in Newton. You will have a chance to see two active cohousing communities and two under construction, and visit with members of each. Cost is \$95 per person and includes lunch. For more information and registration, please use the following link: <http://www.cohousing.org/tours>, or call Henry at 413-549-3722.

Sustainability and the Built World

**Most programs meet Thursdays*
12:30-1:30 p.m.**

**105 Holdsworth Hall,
UMass Amherst**

WMAIA members are invited to join a mid-day lecture series on sustainability being offered at UMass by Prof. Peggi Clouston & Caitlin McKee.

**10/2 Creating 21st Century
Environments**

10/9 Wind Energy in Hull

**10/16 Building America:
Systems Energy Approach**

**10/23 Sharing Ownership of the
Future**

**10/30 The Greening of the
Valley**

**11/3* Measurement and
Leadership: Life Cycle Analysis
and Leed * 9:00 -10:00 a.m.: Lincoln
Campus Center Auditorium**

**11/13 Civil Engineering and
LEED**

**11/20 Sustainable Lighting:
Technology & Techniques.**

**11/21* Green Energy:
Reconfiguring the North
American Power Grid for the
Future * 1:30 -2:30 p.m.: Cape Cod
Lounge, Student Union**

12/04 The Green Maple Tour

**12/11 Affordable & Green:
What Difference Does It Make?**

*Exceptions noted . Check for updated program and scheduling information visit <http://bmatwt597b.weebly.com/> or contact cmckee@art.umass.edu.

Bauhaus Modern

September 26 - December 7
Smith College Museum of Art,
Northampton MA

Bauhaus Modern features almost 100+ posters, graphic design, ephemera, prints, drawings, photographs, paintings, architectural drawings and models, and furnishings by a wide variety of artists associated with the experimental German art school, the Bauhaus (1919-1933). The exhibition demonstrates the integration between architecture and other kinds of representational images through a series of themes, including spectacle, mass culture, and utopia.

Bauhaus Modern is guest curated by Dr. Karen Koehler, Associate Professor of art and architectural history at Hampshire College, and is accompanied by an illustrated catalogue. The exhibition is supported by the Tryon Associates, the Ruth and Clarence Kennedy Fund, the Maxine Weil Kunstadler Fund and the Publications and Research Fund.

The following are public programs being offered in conjunction with the exhibit.

Second Fridays Fun!

Friday, October 10

Lower Level - Stairwell Art Area,
4:00 - 6:00 p.m.

Observe how the artists at the Bauhaus school used shapes and colors in their graphic designs, then design a poster to advertise your school or an event in your life (project designed for visitors with children ages 4+, accompanied by an adult).

Free Second Friday: Lecture

Friday, October 10

Stoddard Auditorium, 6:00-7:15 p.m.

Karen Koehler, associate professor of architectural history at Hampshire College, and curator of Bauhaus Modern will present her lecture on the exhibition.

Bauhaus in the House!

Family Day @ SCMA

Saturday, November 1

Museum of Art, 10:00a.m. - 3:00p.m.

Try your hand at projects geared at introducing kids to the work of the artists who attended this German art school. See original Bauhaus artwork and designs in the gallery and make something to take home to your "haus." Family Day activities and Museum admission are free all day. No registration required; drop in anytime.

Dulcy B. Miller Lecture in Art and Art History

Thursday, November 20

Wright Hall, 7:00 - 8:15 p.m.

Barry Bergdoll, the chief curator of architecture and design at MoMA, will present a lecture entitled "Fabricating the Bauhaus: Historiography and Replicability." Bergdoll has organized, curated, and consulted on many landmark exhibitions of 19th- and 20th-century architecture including "Home Delivery: Fabricating the Modern Dwelling," on view at MoMA through October 20.

For details including updated exhibition and program information and fees visit www.smith.edu/artmuseum.

LOOK!

New Visions for Architecture in Holyoke

through October 27

Wisteriahurst, Holyoke

LOOK! highlights community planning and design initiatives

that promote cultural expression and community visions in the four central neighborhoods of Holyoke. Sponsored by: Architecture + Design Program and The Center for Design Engagement at the UMass Amherst, WMAIA, AIA 150 / Blueprint for America Grant, UMass/Holyoke Planning Network HUD/COPC Grant.

Featured are examples of UMass Amherst student work. Also view AIA150 grant sponsored WMAIA charette results, Greetings from Holyoke postcards and the Box City created by elementary school children (Box City on October 19th only). Admission to the gallery is \$3.



Model of the Bauhaus from the Bauhaus Modern Exhibit at Smith College

photo and model by Gretchen Schneider Assoc. AIA

Williams College

October 1, 4:15 p.m., Griffin 7 Workshop: Sustainable Construction and LEED Certification

Presented by Tom Perry, Shawmut's Director of Engineering Services, Shawmut Design and Construction, and Jason Moran, Project Manager, Williams College.

October 22, 4:00 p.m., Griffin 4 Energy Modeling and Sustainable Design Workshop

Presented by Magda Lelek, Andelman and Lelek Engineering, Inc. and Bruce Coldham, Coldham and Hartman Architects.

For more information, contact Sarah Gardner at 597-4209 or Stephanie Boyd at 597-4462.

Green Buildings Open House

Saturday October 4

Tour Green buildings all throughout New England and be able to see people's homes that have wind generators, solar panels for electricity and/or hot water, a whole variety of green building designs, straw bale construction, etc... Please go to www.nesea.org for more information and to locate the houses on the tour.

Green Building Materials '08

Definitions, Design, and Delivery

**November 3 - 4
UMASS Campus Center
Amherst, MA
8.5 HSW (LUs provided by
WMAIA)**

This conference (chaired by David T. Damery, Associate Professor/Director, Building Materials & Wood Technology Program, Dept. of Natural Resources Conservation, UMass, Amherst) aims to answer questions such as:

- What are green building materials?
- How to interpret and satisfy requirements of a variety of rating systems?
- What's the process for designing, specifying, and sourcing green building materials?
- Documentation issues in the green chain-of-custody
- What's new in Green Building Materials?
- Innovations in Local Sourcing of Materials

For more information or to register visit <http://www.forestprod.org/confgreenbuilding08.html>

Greenbuild 2008

**November 19 - 21
Boston, MA**

Boston is the perfect place to celebrate USGBC's Greenbuild 2008's theme of "Revolutionary Green: Innovations for Global Sustainability."

Buildings play a critical role in protecting and improving our environment and the health of the people who occupy them. Greenbuild is an unparalleled opportunity to connect with other green building peers, industry experts, and influential leaders as they share insights on the green building movement.

Greenbuild includes over 100 educational sessions featuring world renown speakers (such as Archbishop Desmond Tutu and E.O. Wilson), LEED workshops, off-site educational sessions, and Green Building tours of local Boston sites. CEUs will be available for all educational sessions, LEED workshops, green building tours, and post conference seminars. www.greenbuildexpo.org.

Build Boston

**November 18 - 20
Boston, MA**

Earn all your continuing-education credits in three days!

More than 240 workshops and other professional-development opportunities make Build Boston's conference the finest and most diverse program in the country. And this year, conference attendees can visit the exhibit hall at Greenbuild across the street—free. At www.buildboston.com, view the entire workshop program and take advantage of the early-registration discounts, which end October 24.

Self-Reporting Learning Units

Did you know that if you attend a program or participate in an activity that's not offered by an AIA/CES registered provider, you can consider its eligibility for continuing-education credit in the Self-Designed Activity or Structured Self-Reported Program categories? Generally speaking, if a planned educational activity provides you with new knowledge that you can use in your practice of architecture, then it's likely to be accepted for credit. Self-designed activities and structured activities not provided by an AIA/CES registered provider can be reported to the AIA either online or by downloading and printing a self report form. Learn more about self-reporting by visiting http://www.architects.org/education/Index.cfm?doc_id=36#self_report or http://www.ala.org/ces_selfreport.

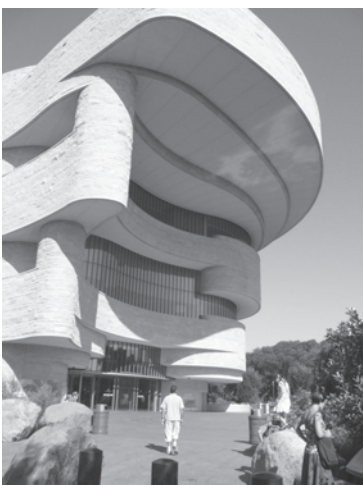
T R A V E L



Diana Wawrzaszek traveled to Peru. On the left is a photo of the terraces up Waynapicchu and on the right, the famous, ancient Incan site of Machu Picchu.



Kerry Dietz AIA traveled to Russia. The photo on the left is of Kizhi Island Cathedral and on the right, the elegant turn-of-the-century GUM Department Store in Moscow.



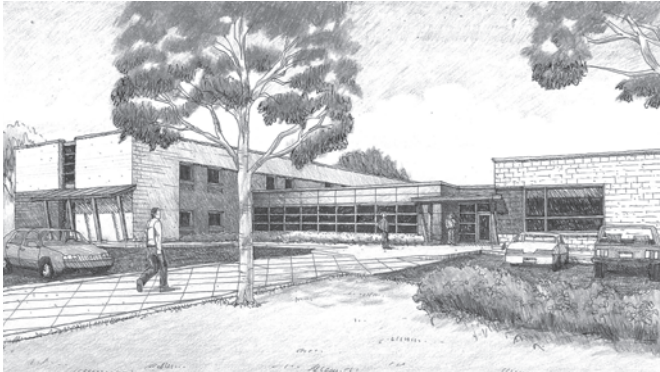
Derek Noble AIA and Erika Zekos Assoc. AIA visited Washington DC. Left, The National Museum of the American Indian, the newest Smithsonian.



Kevin Chrobak AIA visited the South West. Below left is a photo of Louis Kahn's iconic Kimbell Art Museum and on the right, Tadao Ando's response at the Modern Art Museum of Fort Worth

IN THE WORKS

"In The Works" is a regular feature of the WMAIA News. If your firm has new or recently completed work that you'd like to share with the readers then please send 300 dpi jpg images and a short project description to Erika Zekos, WMAIA news editor (studiozed@comcast.net). The deadline for the next issue is September 17th, 2008.



Worthington House Homeless Resource Center Springfield, MA

Dietz & Company Architects of Springfield is providing complete architectural services for a new 30,000 square-foot community resource building that is scheduled to begin construction in 2009. Part of the Worthington House Campus, the new building is designed to accommodate multiple functions. It will feature 32 enhanced SRO's, admin. offices, a reception area and a day center/dining room with commercial kitchen and stockroom. The design also includes a 50-bed women's dormitory with bathing and laundry facilities

as well as a medical and dental clinic. Sustainable features for this building include energy efficient construction methods and high efficiency HVAC equipment and systems. The project also includes renovations to two other campus buildings (totaling 25,000 square-feet).

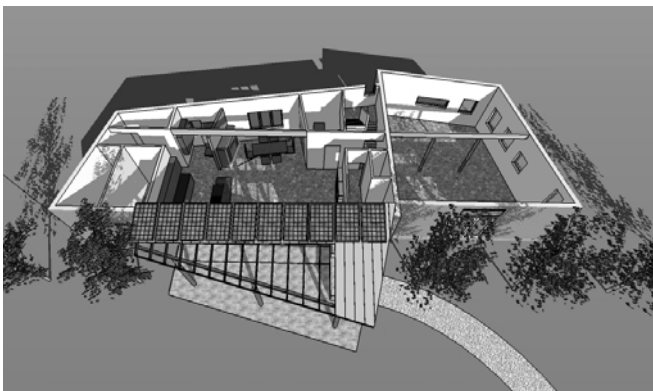
Union Crossing Lawrence, MA

Coldham & Hartman Architects of Amherst recently completed the Master Plan for a complex mill rehabilitation and renovation in Lawrence, MA. The project, spearheaded by Lawrence Community Works and including local developers, business people, and community groups, will provide a complete redevelopment of a site which lies between the North Canal and the Merrimack River in Lawrence. 150+ units of residential housing, small- and medium-sized business incubator space, retail, and open space will be provided by this multi-phase project. The first phase is currently in DD, is over 137,000 square-feet and includes 51 units of rental housing, a daycare, commercial space and parking. To follow this project's process please visit our website at www.coldhamandhartman.com/news.php?id=33.



Passive Survivable Artists' Residence and Studios Florence, MA

Office of Peter Frothingham, RA of Northampton recently completed two studios attached to a three-bedroom home for the artists and their daughter. The model illustrates the building first floor, south-facing patio, covered entry, and solar-electric panels optimized for summer gain. Generous insulation, well-detailed infiltration barriers, and a stained concrete floor slab enable passive solar gain to substantially heat the building. Rooftop solar-thermal panels, optimized for winter gain, will provide 90 degree water to radiant tubes in slab for generous warmth. A biofuel-fired boiler provides back-



up heat. While this approaches a net-zero building, the family priority is instead for live/work spaces habitable up to a few weeks during winter without power.

Architects Day on the Hill continued from Page 2

Secretary of Environmental Affairs and the Commissioner of the Department of Energy Resources.

• **Renewable Energy Trust: Section 21 of SB 2468** expands the use of monies from the Mass Tech Collaborative's Renewable Energy Trust to include energy conservation and energy efficiency measures in buildings and specifically promotes energy-efficient building on the part of school systems and public housing authorities. The use of these monies had been primarily restricted to projects with on-site renewable energy sources.

• **Distributed Generation: Section 69 of SB 2468** allows the creation of small wind and/or solar energy generation facilities. It establishes three classes of "neighborhood" scaled distributed generation facilities of up to two megawatts' capacity, permits the transfer of greater amounts of energy credits ("net metering") and encourages the use of combined heat-and-power generators. It also establishes provisions whereby municipalities may own and operate these facilities. Regulations regarding small distributed-generation facilities had previously been highly restrictive in MA.

• **Green Communities: Section 5 of SB 2457** creates a Green Communities Program that directs funds and services to communities that wish to develop and implement a comprehensive plan to reduce greenhouse gas emissions through the promotion of efficiency, renewable energy, transportation and other strategies. This section also allows Green Communities to issue bonds and establish enterprise funds for the subsidy of projects related to the reduction of greenhouse gas emissions.

Fund-Raising Picnic at the Home of Governor Deval Patrick

Subsequently, in July, there was a fund raising event at the Richmond, MA home of Deval Patrick, to which I was asked

to take the above issues, with thanks for those which are being implemented. The following quotes are from some of the pet "asks" I heard from colleagues and Executive Committee members around the state whose opinions I solicited.

- *"Incentives for small/mid-sized private developers to build high performance buildings."*
- *"Retrofit \$ or subsidies for existing housing seems like a must."*
- *"Subsidizing sustainability and affordable housing and especially the combination of the two."*
- *"I think the most important issue facing our state and economy right now is the re-development of our existing building stock."*
- *"Businesses and homeowners need significant incentives for super-insulated retrofits. Otherwise we will abandon these buildings when fuel costs triple again."*
- *"Can you remind him that UMass is home to New England's only public school of architecture. We stand ready to help with his agenda of improving cities and towns of Western Mass, researching and developing alternative energy sources, and stimulating the creative economy. And a new zero energy School of Architecture building at UMass would be just the place to demonstrate sustainable building practices."*

There was a major looming concern emerging from Boston just as this fundraiser approached, to which Governor Patrick was receptive. In support of State Treasurer Cahill's efforts to cut costs in school construction, the Massachusetts School Building Authority (MSBA) has put in place a number sensible cost control measures for public school construction including standard sizes for gyms, cafeterias, auditoriums, and classroom spaces, along with a specific square footage per student restriction.

The MSBA also launched a Model

Schools Initiative. To help assure the success of the Model School Pilot Program by building schools that are both energy efficient and cost effective to operate now and in the future, the Massachusetts Chapters of the AIA have suggestions that the following initiatives be incorporated into the Model School Pilot Program:

- The MSBA should provide incentives to communities whose architects are able to provide designs that will exceed the current energy code requirements, thus helping to keep long term operational costs low.
- The MSBA should provide incentives to communities who make use of effective renewable energy sources.
- The MSBA should continue to raise the bar for energy efficiency and sustainability in future school designs as new technologies and materials are proven to be effective.
- The MSBA should publicly establish its cost savings objectives, develop the proper criteria for evaluating how, where and why those savings should occur and work out a time schedule for both evaluating and reporting the successes and failures of its Model School Pilot Program.

Do you have a passionate legislative concern? Do you wish other issues had been raised in the lobbying efforts? Do you disagree with policy as outlined above? Contact the Legislative Affairs Committee at the BSA (www.architects.org)! Write letters. Commit to at least one year's participation in "Architect's Day on Beacon Hill". This is an important responsibility as a design professional. Please consider getting involved!

WMAIA PROGRAMS

WMAIA Upcoming Programs

Learning from Bob & Denise – a film by James Venturi

Tuesday, October 7,

5:30 - 7:00 p.m.

Amherst College, Amherst, MA
Fayerweather Rm. 115

1.5 LUs

Learning from Bob and Denise is an upcoming feature-length documentary exploring the complex and contradictory world of the architects, Robert Venturi and Denise Scott Brown. Husband and wife partners, Venturi and Scott Brown are widely considered among the most influential designers of the 20th century. Alternately vilified and idolized many times over in the course of their careers, theirs is a story that is part biography, part art history and part sociological survey of the past half century. The film is the story of their origins, influences, ideas and struggles, and the manifestation of these in their life's work which the filmmaker, their son, hopes will inspire all those whose ideas go beyond the established parameters.

WMAIA, in conjunction with the Five College Architectural Studies program, is pleased to present this film-in-the-works. Following the film, there will be a panel discussion led by James Venturi and Erica Gees AIA, and the audience will have a chance to offer feedback to the film maker as he continues work on this project.

WMAIA Annual Meeting & Awards Program

Thursday December 4, 5:30 p.m.

Blue Heron

Sunderland, MA

LUs – to be announced

Our December program is a celebration of the season and of architecture in western Massachusetts. The winners of our 2008 Awards Program will be announced. All portfolio submissions will be on display and entrants have been asked to show slides and speak about their work. This is an opportunity to see and enjoy a variety of work by your colleagues. December is also our annual election of officers. The awards program, which includes dinner, will be held at the Blue Heron restaurant in Sunderland.

WMAIA Enews

Are you receiving our monthly enews? The WMAIA enews contains the latest information on programs, news and other happenings. If you have not been receiving this email, please contact director@wmaia.org with your current email address so that we can make sure you're on the list.

Watch your mail for more detailed program information and registration forms or just download what you need from our website at: <http://www.wmaia.org/programs/programs.html>.

WMAIA Program registrations should be sent to:

Lorin Starr

WMAIA Executive Director

71 South Main Street

Sunderland, MA 01375

or faxed to:

413-665-2424

For questions regarding programs or to offer ideas for future programs (always appreciated!) please email director@wmaia.org.



40 Hulst Road
Amherst, MA 01002

