

# WM | AIA

N  
E  
W  
S  
L  
E  
T  
T  
E  
R



BURR McCALLUM ARCHITECTS  
MITCHELL / DAVID HOUSE  
SOUTH EGREMONT, MASSACHUSETTS

FALL 2016

KUHN RIDDLE ARCHITECTS

AIA NEW ENGLAND PEOPLE'S CHOICE AWARD



SITE PLAN

The AIA New England Design Awards were presented on September 30, 2016 in Portland, Maine.

Kuhn Riddle Architects received a People's Choice Award for Excellence in Architecture for their multi-family housing project: Olympia Oaks Housing, Amherst Massachusetts.

Congratulations Kuhn Riddle!



IN THIS ISSUE

ONE + TWO AIA NEW ENGLAND PEOPLE'S CHOICE AWARD

THREE + FOUR IN THE WORKS: BURR AND McCALLUM + STEPHEN DIETEMANN

FIVE + SIX ACADEMY OF MUSIC - RESTORED 1913 CURTAIN

SEVEN + EIGHT LIVING BUILDING CHALLENGE AT HAMPSHIRE COLLEGE

NINE + TEN ReCyclingWorks + WMAIA COMMITTEE ON THE ENVIRONMENT

ELEVEN + TWELVE THINGS TO DO + SEE IN WESTERN MASSACHUSETTS

THIRTEEN + FOURTEEN FEATURED ARTISAN: DOUGLAS THAYER - CONCRETE + WOOD

FIFTEEN WMAIA PROGRAMS

THE WESTERN MASSACHUSETTS CHAPTER OF THE AMERICAN INSTITUTE OF ARCHITECTS

THE WMAIA NEWSLETTER IS PUBLISHED FOUR TIMES A YEAR.

IT IS CIRCULATED TO ALL MEMBERS, ADVERTISERS AND SUBSCRIBERS. PLEASE DIRECT ALL NEWSLETTER CORRESPONDENCE TO RACHAEL CHASE ASSOCIATE AIA, AT EDITOR@WMAIA.ORG. ARTICLES, PHOTOS, NOTICES OF EVENTS AND OTHER INFORMATION ARE WELCOME.

OPINIONS EXPRESSED IN THE NEWSLETTER ARE NOT NECESSARILY THOSE OF THE WMAIA.

COVER PHOTO: BURR AND McCALLUM ARCHITECTS

OLYMPIA OAKS, AMHERST MASSACHUSETTS

Completed in 2014, the project consists of 11 buildings containing 42 affordable rental units and a community building. Rental units vary from one, two and three bedroom units. The 42 units of housing are located in 5 townhouse buildings and 6 triplex buildings. The site is developed along two axes. Along the north-south axis is a common green space that includes a central playground, bordered by 4 of the townhouse buildings. The east-west axis is a path that runs from the community building through the central playground, community gardens and connects with the existing nature trail on site. The site is unified by a loop road which connects both axes. Core design goals include community connections, accessibility, affordability and energy efficiency.

The architect and owner's main objective was to create an environment conducive to health, wellness, and a sense of community. Emanating out from the center common, townhouse units are staggered along the North-South axis to break forms in order to define and highlight individual entrances. This in turn nurtures a sense of ownership and encourages stewardship of one's unit. Porch spaces are widely used throughout the site, providing a bridge between public and private spaces. The East-West axis guides the pedestrian from the community building through the heart of the site and into the surrounding woods by means of a trail which connects to other area trails. The site is also sloped on this axis, allowing the community building to become an organizing node at the western end of the axis offering views of the community in its entirety.

The project provides 3 fully accessible units and 8 adaptable units, allowing the owner to convert such units to meet the needs of their tenants. The project also includes 3 units for hearing impaired individuals. The site is fully accessible with an accessible route that leads to a nearby bus stop west of the community and to other pedestrian routes.

The project aimed for and achieved high levels of energy efficiency. This goal was achieved through super insulation with a 12" double stud R-45 wall, R-60 roof, R20 below-grade walls, and sub slab insulation of R10. This, coupled with diligent air sealing and tenant education, led to the project receiving an Energy Star Certified rating and an average 49 HERS rating. The project is oriented and designed for the future installation of a photovoltaic panel system.

WMAIA EXECUTIVE COMMITTEE

PRESIDENT:

HELEN FANTINI AIA

PRESIDENT ELECT:

LUDMILLA PAVLOVA AIA

TREASURER:

DOUG MARSHALL AIA

SECRETARY:

JASON NEWMAN AIA

PAST PRESIDENT:

CHRIS FARLEY AIA

MEMBERS:

CAREY CLOUSE AIA

KAYLA FARRELL ASSOCIATE AIA

GARRISON PIERS-GAMBLE AIAS

STEPHEN SCHREIBER FAIA

GARTH SCHWELLANBACH AIA

JULIE WAGGONER AFFILIATE WMAIA

KRISTIAN WHITSETT AIA

EXECUTIVE DIRECTOR:

LORIN STARR

NEWSLETTER EDITOR:

RACHAEL CHASE ASSOCIATE AIA

EMERGING PROFESSIONALS

COORDINATOR

LINDSAY SCHNARR ASSOCIATE AIA

ARCHITECT LICENSING ADVISOR (IDP)

JASON NEWMAN AIA

WEBSITE MANAGER

JULIE WAGGONER AFFILIATE WMAIA

SOCIAL MEDIA

GARRISON PIERS-GAMBLE AIAS

FILM SERIES

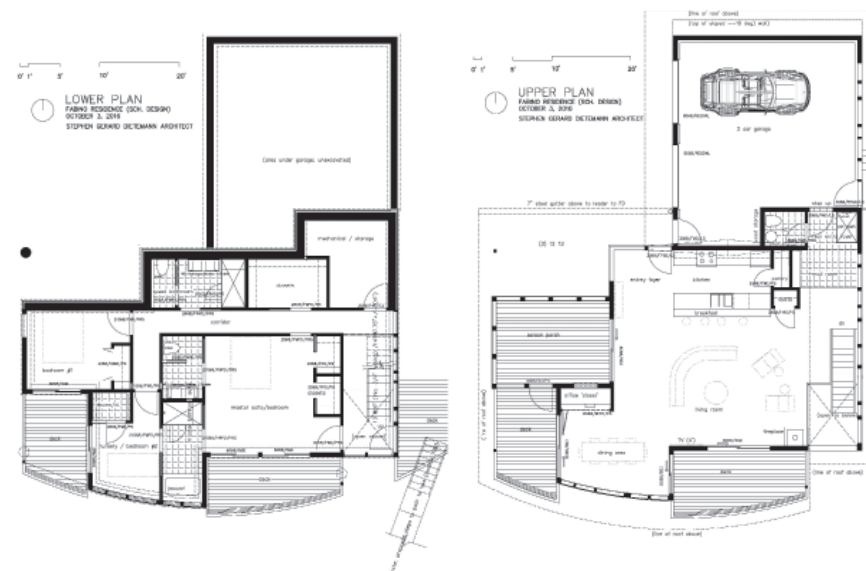
ANDREW BAGGE ASSOCIATE AIA

DISASTER ASSISTANCE COORDINATOR

JOHN ROBINSON AIA



We took the familiar barn form and stretched it to new lengths. Our clients wanted to leave the field as untouched as possible, so all landscape is contained within the 24' width. The roof is continuous over the 300 foot span, with one gap for the pool and associated recreational spaces. The parking and garage are under the covered roof. The two small buildings at the two ends house the guest house and the pool house.



This new, approximately 2,100 SF house will be located adjacent to an old quarry pond deep in the woods outside the town of West Stockbridge, MA. Set into the steeply sloped northern edge of the pond, each of the rooms and accompanying decks of this two story house are directed toward the water to the south. The bifurcated 'butterfly' roof system - the narrower section covers the open stairway down from the entry and the garage while the larger portion sits atop the majority of the house - provides protection from the elements as well as the summer sun. Interior lighting and winter heating will be provided as much as possible by passive solar, while prevailing winds will be harnessed to provide supplemental cooling in the summer. The siding and roofing will be corrugated steel and standing seam steel systems respectively. Construction is slated to begin in the Spring of 2017.

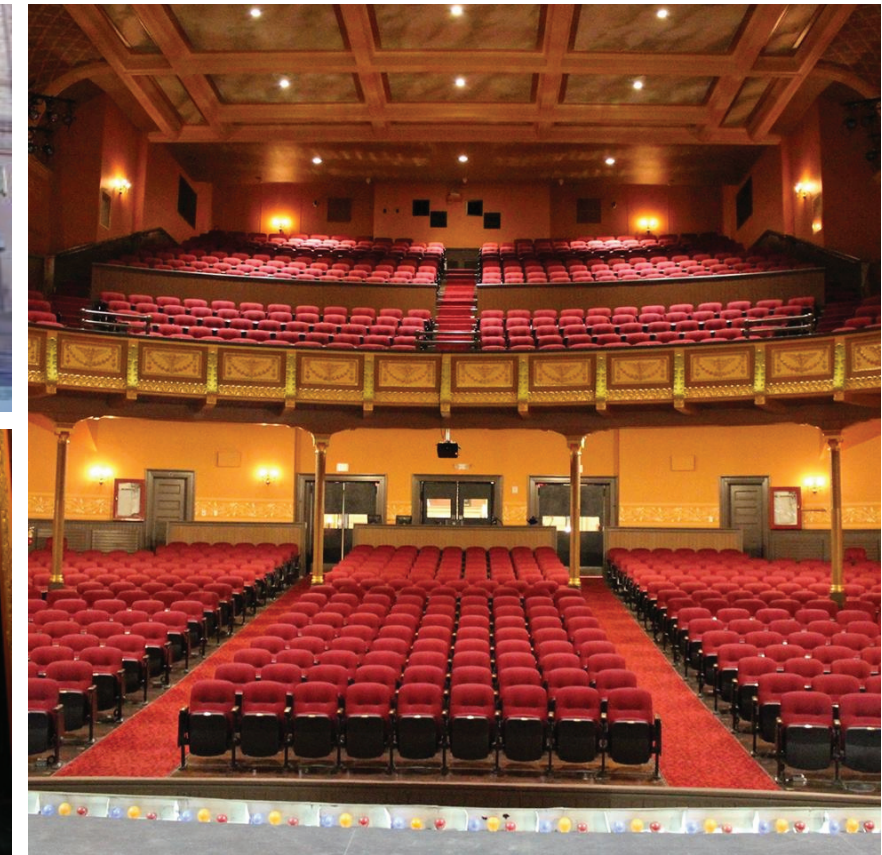


The Academy of Music Theatre has unveiled an historic gem that has not been seen by the public in a century: a beautiful, antique scenic curtain depicting a classic Northampton vista. During the Academy's auditorium restoration in 2014, theater staff discovered a scenic drop curtain stapled to the back of the 1917 cut velvet main drape that still graces the stage's proscenium opening. Once carefully removed from the main drape, a 40' by 30' local landscape painting was revealed, signed and dated 1913 by Maurice Tuttle, a renowned scenic painter of the time. Mr. Tuttle, based out of Milwaukee and New York City, worked as a freelance artist, creating scenic paintings throughout the United States and Canada. He was often hired by theatre magnate, Sylvester Zefferino Poli who was heralded as the largest individual theater owner in the world, and Jessie Bonstelle, the most successful stock theater producer in the country in the early 20th century. Many of Mr. Tuttle's scenic designs were retained for subsequent Broadway runs of stock productions, including 1912's premiere of Little Women. He worked at the Academy of Music for several seasons in the 1910s, generally as a scenic designer and painter and sometimes also appearing onstage.

Through in-depth research, the history of the curtain unfolded. The painting created in 1913 depicts Northampton's Paradise Pond, a crest for the city of Northampton, and, perhaps most intriguing, the distinctive tower of Maynard's Hoe Shop, which burned down just four years later. The design was painted over top of what had been the original main proscenium curtain, a blue-and-white striped canvas decorated in floral stencils and hand-painted pinstripes, dating from the building's opening in 1891. Mr. Tuttle repainted it for *The Liars*, the opening production of the Northampton Players' second season in October 1913. An article from the Northampton Daily Herald recalls the success of the opening night and shines light on the curtain's history: "The Academy of Music was packed to the doors....It was all a great success and the opening of the season has nothing but good fortune in the promise it gives. And a new curtain, which was meant to be a surprise, was more than that, it was a delight." The article describes the original curtain's "striped fadedness," which the new painting masked, helping the Academy to confirm the identity of its rediscovery.

Even prior to this research, it was immediately evident that the Academy had stumbled upon a stunning and truly unique find that had been under everyone's noses for decades. Curtains Without Borders, a scenic curtain conservator based in Vermont, was called in to consult. They noted that this was the largest scenic curtain known to exist on the East Coast and recommended it be conserved as soon as possible. Community Preservation Act funds were acquired, allowing the conservation process to be completed over two weeks in early August 2016.

The Academy is thrilled to offer this piece of Northampton history back to the community!





EASTERN ARCHITECTURAL  
REPRESENTATIVES

### Eastern Architectural Representatives

is the New England representative for **Firestone Building Products**.



**What We Offer:**

Solutions for a variety of building envelope systems including:

- Low-Slope Roofing Systems
- Steep-Slope Metal Roofing Systems
- Green Building Solutions
- Design & Estimating Services for Tapered Insulation and Metal Roofing Systems
- Top Quality Roof Hatch, Smoke Vents, Access Doors and Floor Hatches.



**Eastern Architectural Representatives • (866) 533-1010 • [eastern@easternar.com](mailto:eastern@easternar.com)**



PHOTOS: ROBERT BENSON PHOTOGRAPHY

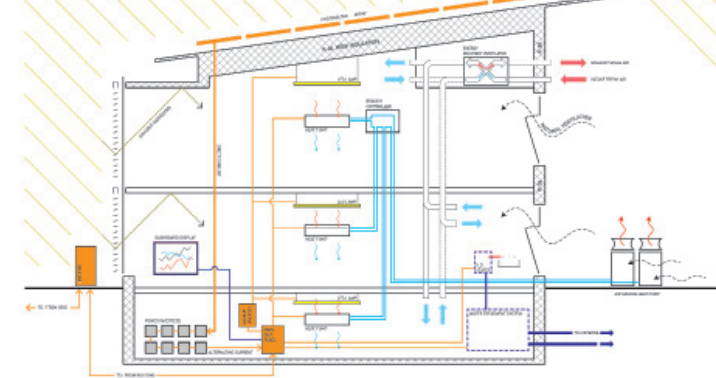


**A BUILDING FOR THE FUTURE**

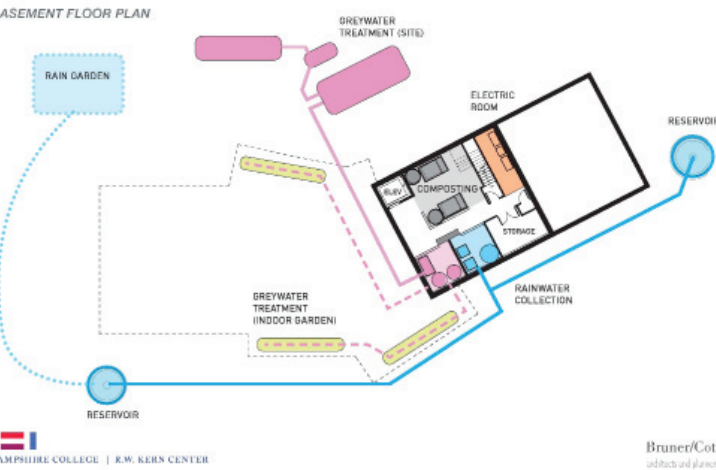
The R.W. Kern Center is a new 17,000 square foot campus building at Hampshire College in Amherst, Massachusetts, designed to meet the Living Building Challenge. The Living Building Challenge is the most rigorous performance standard for sustainable buildings, comprising seven thematic performance areas and twenty specific benchmark imperatives for achievement. As a Living Building, the Kern Center is completely self-sustaining, generating its own energy, capturing its own water, and processing its own waste while remaining sensitive to its campus and environmental context.

“The Kern Center is a physical embodiment of [the College’s] values and the philosophy that is at the root of our approach to education.” – Hampshire President Jonathan Lash

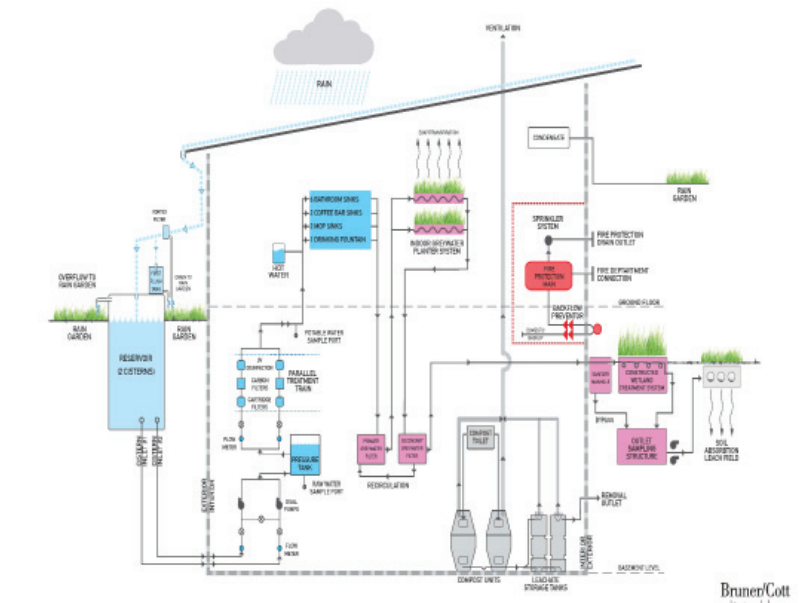
**ENERGY DIAGRAM**



A 118 kilowatt solar array on the roof exceeds the building’s remaining energy demands, making it a net-positive system. All the buildings systems are extensively metered, and a digital dashboard enables occupant engagement with the building’s energy production, water use, and overall performance. All diagrams by Bruner / Cott Architects



**WATER DIAGRAM: PLAN**



**WATER DIAGRAM: SECTION**

The Kern Center employs a net-positive water system, capturing, treating, and disposing of all its own water on site. Rainwater is collected from the roof and stored in two 5,000-gallon reservoirs adjacent to the building; from there it is processed and treated for drinking. Composting toilets use no water, reducing the overall water consumption to just 150 gallons per day. Greywater is filtered through indoor planters in the building’s central common space, and then out to an on-site constructed wetland of native plantings. As a DEP pilot project, this innovative system has already made an impact on environmental water policy in Massachusetts.

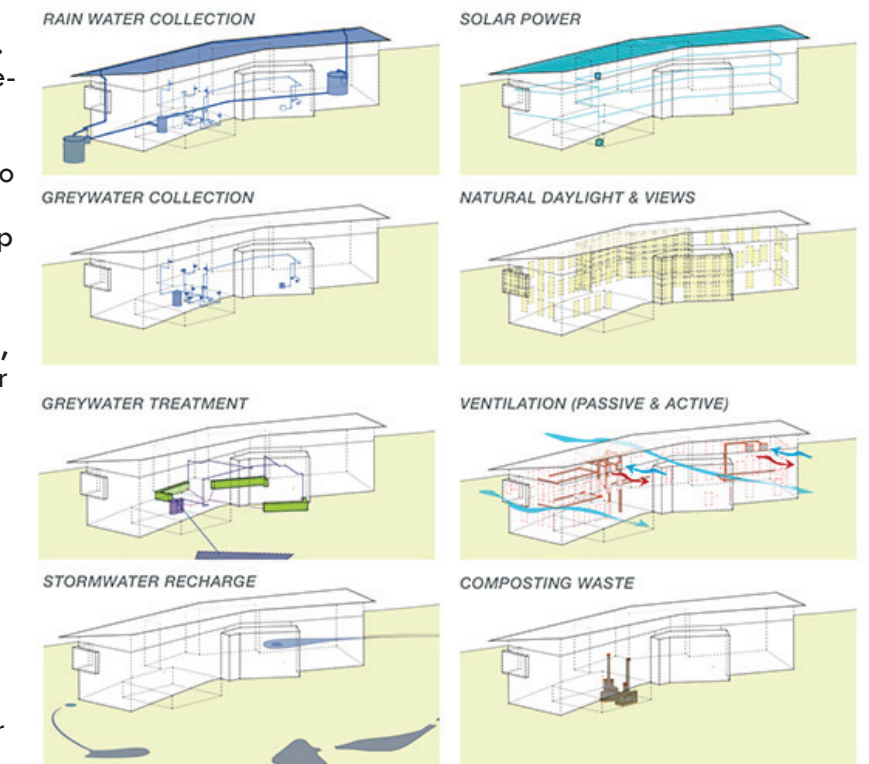


**DESIGNING A LIVING BUILDING**

Kern’s sustainable design begins with strategies appropriate for a cold climate: passive solar orientation, robust insulation, an air-tight envelope, exterior shades, and triple glazed windows help mitigate against large swings in temperature and humidity typical of New England climate. The placement of windows and window-to-wall ratio is calibrated to provide maximum access to natural light for those working in the building. The Kern Center’s envelope is designed to maximize thermal efficiency without compromising human health or environmental sustainability. The double-thickness cavity wall eliminates thermal bridging and employs a vapor-permeable moisture-resistant membrane and rainscreen assembly to prevent water infiltration. Rather than use traditional insulation, Kern uses dense-packed cellulose, a safe-to-handle industrial waste product with a much smaller carbon footprint. These strategies reduce the building’s energy use intensity to just 18.2 kilowatts per square foot—89% less than the average campus building. A 118 kilowatt roof top solar array exceeds the building’s energy demands, making it a net-positive system.

The Kern Center employs a net-positive water system, capturing, treating, and disposing of all its own water on site. Rainwater is collected from the roof and stored in two 5,000-gallon reservoirs adjacent to the building; from there it is processed and treated for drinking. Composting toilets use no water, reducing the overall water consumption to just 150 gallons per day. Greywater is collected and filtered through indoor planters in the building’s central common space, and then out to an on-site constructed wetland of native plantings. All the buildings’ systems are comprehensively metered. An interactive display communicates the building’s energy production, water use, and overall performance to occupants and visitors.

The Kern Center exemplifies an innovative values-based approach to materials selection. Rather than designing the building and then choosing compatible materials and structural systems, the design team sought out the best available materials and designed the building around this palette. Materials were selected to meet the intersecting imperatives for local sourcing, responsible industrial practices, and avoidance of “red list” substances which have adverse effects on human health and the environment. Kern is clad in Ashfield schist veneer taken from a quarry located only 30 miles from campus, and accented with a locally fabricated concrete. The building is constructed of laminated timber from sustainably forested wood. The interior is grouted by polished concrete with local exposed aggregate and salvaged red oak planks.



Building Systems will be on display and used as a learning and teaching lab

DO YOU HAVE ANY TECHNOLOGY RELATED QUESTIONS?

EMAIL EDITOR@WMAIA.ORG

INTERESTED IN LEARNING MORE ABOUT THE LIVING BUILDING CHALLENGE™?

SEE WMAIA PROGRAMS (BACK PAGE) FOR OUR LBC WORKSHOP:

WEDNESDAY, OCTOBER 19TH 6-8PM IN BOSTON



## ReCyclingWorks C&D STAKEHOLDER MEETINGS THIS FALL



You can help RecyclingWorks develop best management practices for building professionals to increase recycling and reuse of construction and demolition (C&D) materials. RecyclingWorks is coordinating a series of stakeholder meetings that will inform the development of this guidance. Through these meetings, RecyclingWorks is learning about reuse and recycling of these materials from the experience of contractors, architects, C&D haulers and processors, salvage outlets, and others involved in the C&D waste stream with reuse and recycling of these materials.

Topics for discussion include:

1. Reuse: Connecting with salvage outlets to capture reusable materials.
2. Source Separation: What materials make sense to separate on-site and at what scale of project?
3. C&D Processing: Best practices for capturing high-value materials at comingled facilities.

Please attend one of these meetings to share your experience with these or other issues related to diverting construction and demolition materials from disposal.

### WESTERN MASS C&D STAKEHOLDER MEETING

<http://recyclingworksma.com/events/western-mass-cd-stakeholder-mtg/>  
Date: November 10, 2016 Time: 2:30pm – 4:00pm  
Location: EcoBuilding Bargains, Springfield

### C&D MATERIALS DISCUSSION AT BOSTON SOCIETY OF ARCHITECTS

<http://recyclingworksma.com/events/cd-materials-discussion-boston-society-architects/>  
Date: November 30, 2016 Time: 6:00pm – 8:00pm  
Location: Boston Society of Architects

**About Recycling Works:** RecyclingWorks in MA is a free recycling assistance program, funded by the Massachusetts Department of Environmental Protection and administered by the Center for EcoTechnology, that helps businesses and institutions maximize recycling, reuse, and composting opportunities.

For more information or to add yourself to the event invite list, call the RecyclingWorks hotline at (888) 254-5525 or email [info@recyclingworksma.com](mailto:info@recyclingworksma.com).

Website: [www.recyclingworksma.com](http://www.recyclingworksma.com)

Contact: [info@recyclingworksma.com](mailto:info@recyclingworksma.com)  
(888) 254-5525



## CollectiveCopies in Amherst & Florence, MA

Committed to our community, the co-operative movement, and the arts since 1983

Express yourself!  
Briefs, books & manuals  
Programs & invitations  
Color and b/w digital  
Document scanning  
Posters and cards

Plus Equal Exchange chocolate & other co-op-produced goods  
Amherst 413.256-6425  
Florence 413.586.5829

• On the Amherst Town Common  
• Next to the Florence Diner  
[www.collectivecopies.com](http://www.collectivecopies.com)

You want a collaborative M/E/P partner.

### We understand.

Since 1992, we've worked closely with the architectural community to ensure buildings perform the way they were envisioned.

We know your challenges and understand your needs.

We're proud to support AIA.

We're proud to support you.



(413) 743-9500 ♦ [hec@hesnor.com](mailto:hec@hesnor.com) ♦ [www.hesnor.com](http://www.hesnor.com)

## WMAIA COMMITTEE ON THE ENVIRONMENT

WMAIA is interested in starting a COTE – Committee on the Environment – and we are looking for community members who would like to help form and sustain this committee. The committee would determine how COTE could support professionals engaged in designing and building environmentally sound structures and sustainable communities. A steering committee met and discussed a preliminary vision for this committee, that may include the following, but that would be formalized by the committee:

**a. Mission:** To provide resources to our members and our greater community that fosters the development of environmentally sound structures and sustainable communities.

### b. Goals:

- Hold monthly gatherings with a focused topic of discussion that relates to Green Building and sustainable development.
- Hold one annual event and continue on alternate years the Green Giants program initiated by the West Branch USGBC.

iii. Coordinate between the AIA, USGBC, NESEA and other environmentally focused design/build organizations for education opportunities.

**c. Committee Members:** Possibly 5 to 8 WMAIA members, 2 to 3 building industry/trade leaders and 1 to 2 graduate students.

**d. Meetings:** Monthly meetings with the exception of July and August on the second Tuesday of the month.

If you are interested, please come to the first meeting, check-out the discussion and see if you would like to be a part of the committee. This meeting is open to the community at large, not just architects; we want the discussion and committee to be a cross-section of those engaged in the development of the built environment.

The first meeting will be January 10, 2017 from 4:30pm to 6pm at Kuhn Riddle Architects in Amherst. Please RSVP to [atierney@kuhnriddle.com](mailto:atierney@kuhnriddle.com). We hope to see you there!

# ARCHITECTURE THROUGH FILM

FALL 2016



Presented by  
the Western Massachusetts  
Chapter of the  
American Institute of Architects  
and the Five College  
Architectural Studies Program



October 11

**The Gruen Effect:**  
Victor Gruen and the  
Shopping Mall (2009)

LUs 1.5

October 25

**How Much Does Your  
Building Weigh Mr. Foster**  
(2010)

LUs 1.5

November 22

**Moshe Safdie:**  
The Power of Architecture  
(2005)

LUs 1.5

**Location: Room 113 @ Fayerweather Hall - Amherst College - 6:30 PM.**

**All films followed by discussion. Free and Open to the Public**



Building Sustainably in  
Western New England  
since 1974.

Northampton, MA (413) 586.8287



Fulfilling a Designers' Mission through Leadership and Collaboration.



[wright-builders.com](http://wright-builders.com)

commercial | institutional  
construction management  
new homes | additions  
design | renovations

[info@wright-builders.com](mailto:info@wright-builders.com)



38 Front Street FL 3 Worcester, MA 01608  
t. 508-797-0888 f. 508-797-5130

**mica  
blue**  
CREATIVE

Julie Waggoner  
Affiliate WMAIA  
jwaggoner@micablue.com  
413-665-2280

Graphic Design  
Web Design  
Copy Writing  
Photography



IT'S **olander** FOR **brick**

JONATHAN T. OLANDER

EDWIN L. OLANDER, INC. PHONE (413) 586-5608  
P.O. BOX 236 FAX (413) 586-2376  
NORTHAMPTON, MA 01061 CELL (413) 537-3601  
OLANDERBRICK.COM j.olander@comcast.net

**Rock Solid**  
Geotechnical Services

www.oto-env.com

**O'Reilly, Talbot & Okun**  
[ ASSOCIATES ]

*Quality, Safety, Experience.*  
*Our people make us more than metal and glass.*

Western New England University  
Center of the Sciences and Technology

Chandler  
Architectural  
Products, Inc.

255 Interstate Drive  
West Springfield, MA 01089  
Tel: (413) 733-1111 Fax: (413) 737-6101

**KENT HICKS**  
CONSTRUCTION CO.

Deep Energy Retrofits  
Net Zero Homes  
413-296-0123

**INTEGRITY**  
DEVELOPMENT & CONSTRUCTION, INC.



Renovation & New Construction

Call  
413.549.7919  
for a FREE DESIGN  
CONSULTATION

110 Pulpit Hill Road,  
Amherst  
www.integbuild.com



planning  
land surveying  
civil engineering  
optical alignment  
project management  
electrical engineering  
structural engineering  
mechanical engineering



50 Depot Street, Dalton, MA 01226  
(413) 684-0925 Fax (413) 684-0267  
www.hillengineers.com

## THINGS TO DO + SEE IN WESTERN MASSACHUSETTS



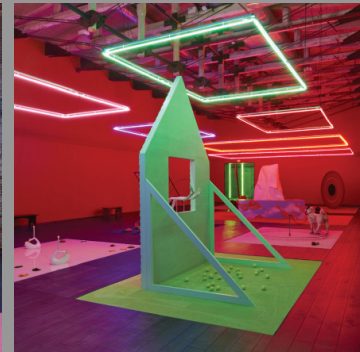
RICO GATSON: HALLS WALLS



Artist Rico Gatson inaugurates Hall Walls, an annual project that gives artists and students the freedom to create an ephemeral artwork on the walls of the museum. Beginning in October, Gatson and Amherst students will work together to create the mural at the Mead, to be unveiled in Spring 2017.

### MASS MoCA

ALEX DA CORTE:  
Through mid-January 2017  
Provocative, puzzling, and  
visually seductive, in his first  
museum survey Alex Da  
Corte's neon-bright, exuberant  
works merge the lan-  
guages of abstraction and  
modern design with banal,  
off-brand items, ranging  
from shampoo to soda to  
tchotchkes and household  
cleaning supplies.



### Berkshiremuseum



### LIVING ON EARTH: The Work of Robert Hite

This dual-site exhibition is on view at  
Hancock Shaker Village and Berkshire  
Museum through October 30, 2016.

Robert Hite is an accomplished  
painter, sculptor, and photographer,  
whose work often includes components  
of all three disciplines. He creates  
small-scale structures, dwellings, and  
living spaces, many of which then  
become central to his photographs  
once they are sited in the landscape.  
Hite finds inspiration in the ever-  
present influence of nature and the  
narrative tradition of his Southern  
upbringing. His images have an  
engaging, intriguing ambience,  
created by the way he captures the  
three-dimensional structures as they  
are placed in nature.



Supporting  
the  
Architectural  
Community

Dennis O'Rourke  
dorourke@184.pellapdsn.com



**VIEWED TO BE THE BEST.®**

Photo: Adam Laipson  
Kuhn Riddle Architects



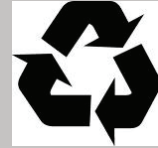
**DOUGLAS THAYER  
WOODWORKING & DESIGN,**  
located in Florence Massachusetts,  
offers unique hand built benches and  
tables made to heirloom standards.

Douglas Thayer Woodworking  
& Design has a long standing  
commitment to socially responsible  
production and conscientious design.  
Thayer incorporates reclaimed and  
local woods with natural concrete  
and metal. From salvaging wood  
used for pickling and wine making in  
South Deerfield, MA, to most recently  
developing a line of furniture from  
the IPE lumber that lined the Coney  
Island Boardwalk in Brooklyn, NY,  
Thayer is as creative and careful  
with material sourcing as he is with  
designing and building.

www. <http://douglasthayer.com>

WOULD YOU LIKE TO NOMINATE SOMEONE FOR FEATURED ARTISAN?  
EMAIL EDITOR@WMAIA.ORG





## WM AIA programs

### WMAIA DESIGN AWARDS

This is a WMAIA Design Awards Year!

Submissions are due by October 21st. See call for entries on our website [wmaia.org](http://wmaia.org). Awards will be presented at our Annual Meeting on December 1st. This year we are once again partnering with the Western Massachusetts Section of the Boston Society of Landscape Architects so there is a Landscape Architecture category and a combined Architecture/Landscape Architecture category.

Start planning your submission now!

If you have any questions, please contact [director@wmaia.org](mailto:director@wmaia.org)

**SAVE THE DATE: DECEMBER 1, 2016**  
**WMAIA ANNUAL MEETING & AWARDS PRESENTATION**  
**SPONSORED BY PELLA PRODUCTS**  
**LOCATION WILL BE ANNOUNCED SOON!**

### INTERESTED IN LEARNING MORE ABOUT THE LIVING BUILDING CHALLENGE™?

WMAIA is co-sponsoring a panel discussion at the BSA on Wednesday, October 19th 6-8PM that focuses on the four LBC projects in Western Massachusetts:

Bechtel Environmental Classroom, Smith College, Whately, MA

R.W. Kern Center, Hampshire College, Amherst, MA

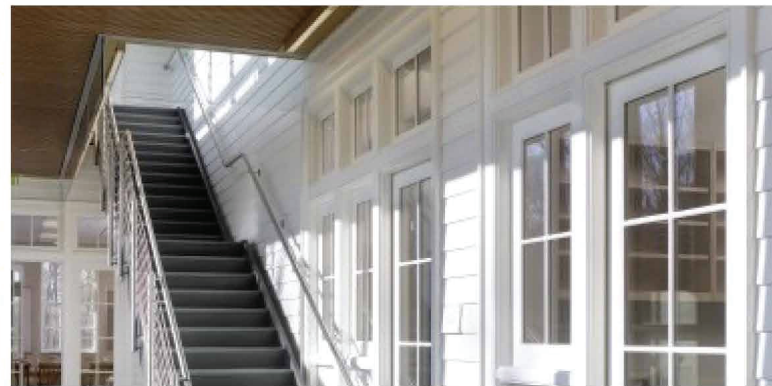
Hitchcock Center for the Environment, Amherst MA

Zilkha Center for Environmental Initiatives, Williams College, Williamstown, MA

For more information visit: <http://www.architects.org/programs-and-events/living-building-challenge>

Registration is required. 2 HSW.

## Congratulations 2016 MARVIN ARCHITECTS Challenge Winners



### 2016 WINNER - BEST COMMERCIAL

THE FREDERIC C. HAMILTON MATH AND SCIENCE CENTER, Millbrook, NY

Architect: Daniela Holt Voith

Architect Firm: Voith & Mactavish Architects LLP



Let us help you turn your blueprints into beautiful spaces. To explore solutions for your next project, contact your Western Massachusetts Marvin Representative:

Stephen Hoyt at 413.923.8321 or [shoyt@awhastings.com](mailto:shoyt@awhastings.com)

