

WM | AIA



N
E
W
S
L
E
T
T
E
R

c&h architects
Mid-Century Modern DER
New Haven, CT

FALL 2017

NEWSLETTER OF THE WESTERN MASSACHUSETTS CHAPTER

PEARL DISTRICT: PORTLAND, OREGON

LORIN STARR

I traveled to Portland, Oregon this summer to attend the AIA CACE (Council of Architectural Component Executives) Annual Meeting. This conference brings together chapter leaders from all over the country for a few days of professional development and best-practices sharing. It was a privilege to be able to attend. The host chapter (in this case AIA Portland) showcases their home town; I took part in a walking tour of the Pearl District.

The Pearl District covers 100 city blocks (245 acres) in the Northwest quadrant of Portland. Since the 1990s, the expansion of the urban grid into this previously desolate industrial area and former rail yard has been revived through mixed-use development interspersed with parks and other public spaces. It is a vibrant commercial/residential/arts/entertainment area. The mix of rehab, repurposed and new construction creates a seamless -- and seemingly organic -- extension of the city. Construction continues as remaining lots are infilled. It's an obvious urban renewal success story. Yet, it also reveals some of the problems Portland is facing. I met two old friends who are longtime Portland residents. Both reported (independent of each other) that gentrification and skyrocketing prices downtown are exposing blatant income inequality, including a surge in the homeless population. As people push further out of the city for affordable housing, public transportation hasn't kept pace, resulting in increased vehicular traffic and parking woes. Hopefully these issues can be addressed with the same creativity that generated the Pearl District.



I

ALL PHOTOS: LORIN STARR

IN THIS ISSUE

- ONE** AIA CACE 2017 IN PORTLAND OREGON: LORIN STARR
- TWO** AIA MASSACHUSETTS UPDATE: CHRIS FARLEY AIA
- THREE + FOUR** CHURCH ON THE HILL CHARETTE 2017: KERRY BARTINI AIA
- FIVE + SIX** BEFORE + AFTER: FITCH ARCHITECTURE & COMMUNITY DESIGN
- EIGHT** COTE UPDATE: AELAN TIERNEY AIA
- NINE + TEN** FEATURED ARTISAN: MICHAEL HUMPHRIES WOODWORKING
- TWELVE** WMAIA PROGRAMS

THE WESTERN MASSACHUSETTS CHAPTER OF THE AMERICAN INSTITUTE OF ARCHITECTS

THE WMAIA NEWSLETTER IS PUBLISHED FOUR TIMES A YEAR. IT IS CIRCULATED TO ALL MEMBERS, ADVERTISERS AND SUBSCRIBERS. PLEASE DIRECT ALL NEWSLETTER CORRESPONDENCE TO RACHAEL CHASE ASSOCIATE AIA, AT EDITOR@WMAIA.ORG. ARTICLES, PHOTOS, NOTICES OF EVENTS AND OTHER INFORMATION ARE WELCOME. OPINIONS EXPRESSED IN THE NEWSLETTER ARE NOT NECESSARILY THOSE OF THE WMAIA.

COVER PHOTO: ETHAN DRINKER PHOTOGRAPHY

AIA MASSACHUSETTS UPDATE

CHRIS FARLEY AIA



AIA Massachusetts

AIA MA represents the three local MA member chapters on all legislative and regulatory matters of interest to our members.

The State Legislature is nine months into this two-year session and The Government Affairs Committee is tracking 161 of the roughly 7,000 bills filed. AIA MA has taken active positions on 12 of these bills; supporting 8 and opposing 4. The following bills are the ones AIA MA is following most closely;

SB132 & HB2826 – An Act relative to advancing the profession of Interior Design – This bill would establish a regulatory framework for the licensing of registered interior designers; limits registration to people who pass the interior design examination administered by the National Council for Interior Design Qualification (NCIDQ). AIA MA is opposed to these bills on health, safety, and welfare grounds as well as having many questions about the details of such an act.

SB81 & HB2420 - An Act building for the future of the Commonwealth – Makes global changes in the zoning and municipal planning process with the intent of updating antiquated zoning laws that have not be updated in over thirty years. AIA MA supports this bill.

SB1821 – An Act combating climate change - The bill establishes carbon dioxide emissions charges through the year 2050, as well as rebates for residents and employers in the Commonwealth. AIA MA supports this bill.

SB296 – An Act relative to projects funded by the school building authority – This bill would prohibit applicants from entering into contracts for design services unless the designer has obtained sufficient professional liability insurance that covers a minimum of 50 per cent of the project's estimated cost of construction. AIA MA opposes this bill.

On the Regulatory side, AIA MA is working with a number of state commissions/ task forces on the following issues: Blended Building Code, New Fire Code, Architectural Registration Board – New Regulations, Construction Codes – Regulatory Restructuring and the Building Code Coordinating Council (BCCC) and the Reformation of AIA MA/ACEC/DCAM Working Group – AIA MA supports the DSB in their initial steps towards the elimination of fee schedules in favor of negotiated fees.

The AIA MA website has been launched, please visit at www.aiama.org. We will continue to add functionality to the site in the coming months and plan to have it fully functional by Summer 2018.

WMAIA

EXECUTIVE COMMITTEE

PRESIDENT:

HELEN FANTINI AIA

PRESIDENT ELECT:

LUDMILLA PAVLOVA AIA

TREASURER:

DOUG MARSHALL AIA

SECRETARY:

JASON NEWMAN AIA

PAST PRESIDENT:

CHRIS FARLEY AIA

MEMBERS:

KERRY BARTINI AIA

CAREY CLOUSE AIA

CHRISTOPHER NOVELLI AIA

GARRISON PIERS-GAMBLE AIAS

STEPHEN SCHREIBER FAIA

GARTH SCHWELLENBACH AIA

KRISTIAN WHITSETT AIA

EXECUTIVE DIRECTOR:

LORIN STARR

NEWSLETTER EDITOR:

RACHAEL CHASE ASSOCIATE AIA

EMERGING PROFESSIONALS

COORDINATOR

LINDSAY SCHNARR ASSOCIATE AIA

ARCHITECT LICENSING ADVISOR (IDP)

JASON NEWMAN AIA

WEBSITE MANAGER

JULIE WAGGONER AFFILIATE WMAIA

SOCIAL MEDIA

GARRISON PIERS-GAMBLE AIAS

FILM SERIES

ANDREW BAGGE ASSOCIATE AIA

DISASTER ASSISTANCE COORDINATOR

JOHN ROBINSON AIA

COTE COMMITTEE CO-CHAIRS

AELAN TIERNEY AIA

LAWSON WULSIN ASSOCIATE AIA

CHURCH ON THE HILL CHARETTE 2017

LENOX, MA

A small but lively group of architects and designers gathered at the Church on the Hill in Lenox for a day of healthy discussion and charrette. Guided through the day on Saturday, September 30th, by Joshua Castano of Partners for Sacred Places, six architects worked on creative ways to address repurposing the Church building into a space that can better serve the community at large, as well as continuing to serve its strong congregation. We were welcomed by Pastor John Nelson and members of the congregation. All joined the designers throughout the day, showing the building, providing history, helping with context and identifying goals and objectives.

A report was completed by Partners for Sacred Places after a Community Asset Mapping event was held back in late June. At that time, members of the Berkshire County community, congregation and various cultural organizations gathered to identify assets of the church, assets of the greater community and ways to connect those assets.

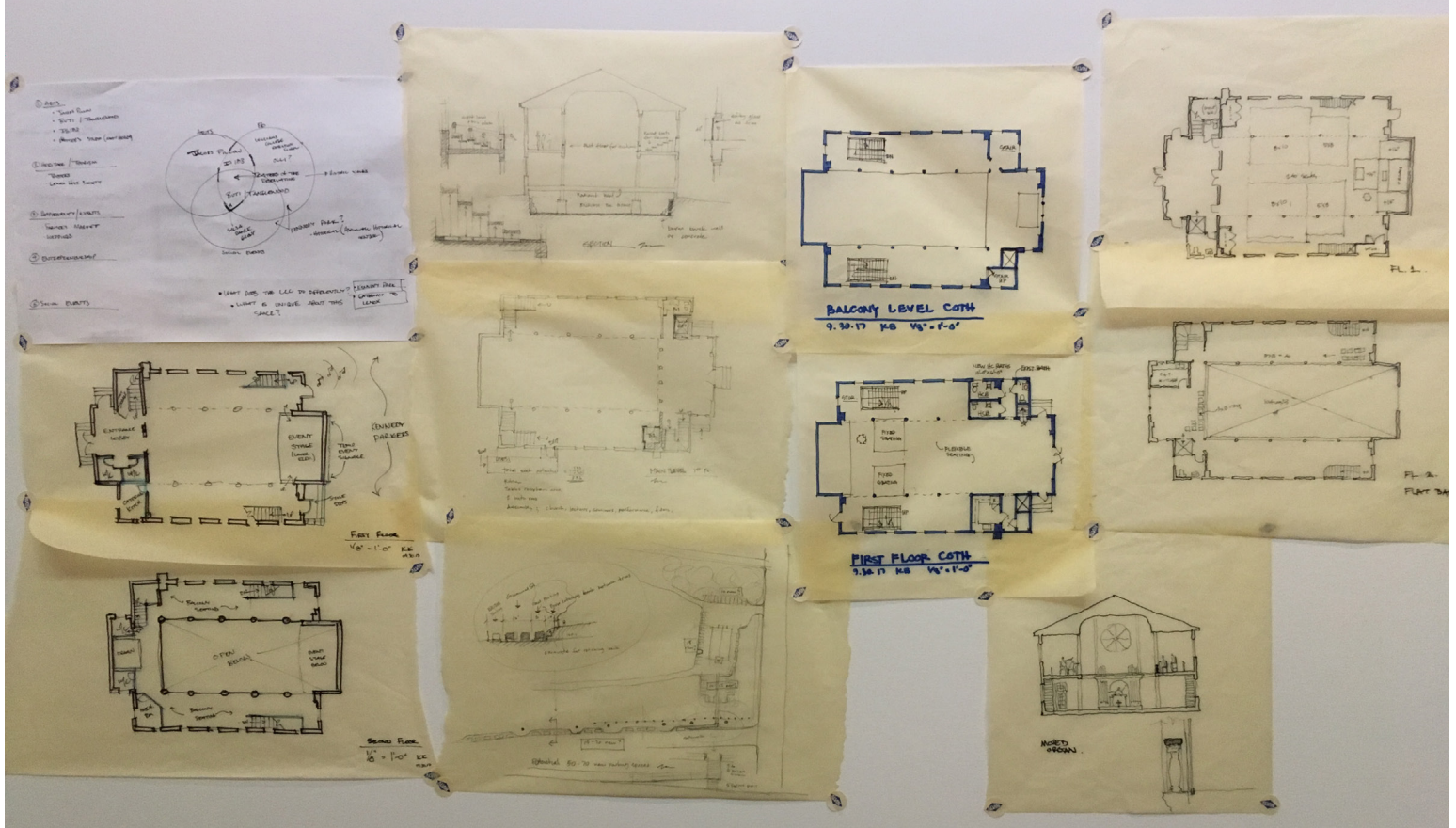
The results of the Community Asset Mapping were shared with the designers. Working with Joshua Castano, we then identified the primary goals of the charrette. The designers were tasked with suggesting design solutions to: address handicap access throughout the building, including bathrooms and an elevator or lift; provide proper means of egress from the balcony in order to utilize the second story space for public use; strategize flexible ways for the church to use the larger spaces.

Rob Akroyd of Greylock Design Associates, a landscape architecture and land planning firm in Lenox, was able to join the group for a short time to lead a discussion on creative ways to address site planning. He was able to connect those ideas to the larger concepts of the town's planning. Lorin Starr also stopped by on behalf of WMAIA.

At the end of the day, the architects presented their design solutions to Partners, Pastor John and members of the congregation. Ideas ranged from practical solutions for best use of existing space to creating a below ground level; from activating other entries and creating interest from the street to maximizing the convertibility of spaces. All ideas had full accessibility, means of egress, bathrooms and a catering kitchen. Other solutions also detailed ideas for built-ins that could be configured in various ways to serve multiple purposes.

The charrette was well received. The architects were able to provide design solutions that solved real needs, but also have a little fun programming the spaces and participating in robust discussions. It was great to see architects from various parts of western Massachusetts and eastern New York turn out to lend their skills for a day.





You want a collaborative M/E/P partner.

We understand.

Since 1992, we've worked closely with the architectural community to ensure buildings perform the way they were envisioned.

We know your challenges and understand your needs.

We're proud to support AIA.

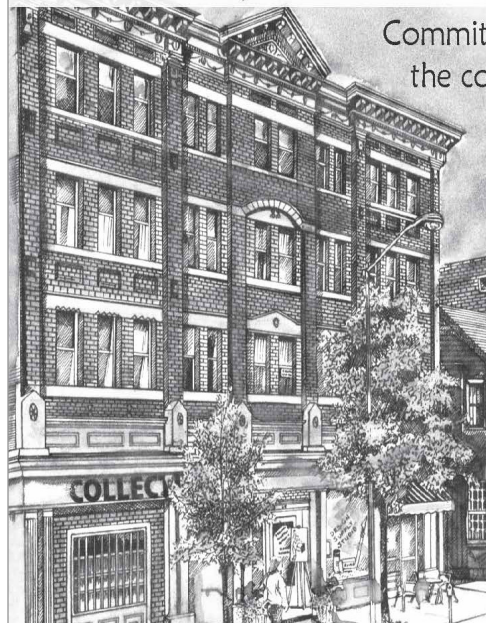
We're proud to support you.



(413) 743-9500 ♦ hec@hesnor.com ♦ www.hesnor.com

CollectiveCopies in Amherst & Florence, MA

Committed to our community,
the co-operative movement,
and the arts since 1983



Express yourself!

- Briefs, books & manuals
- Programs & invitations
- Color and b/w digital
- Document scanning
- Posters and cards

Plus Equal Exchange chocolate & other co-op-produced goods

Amherst 413.256-6425

Florence 413.586.5829

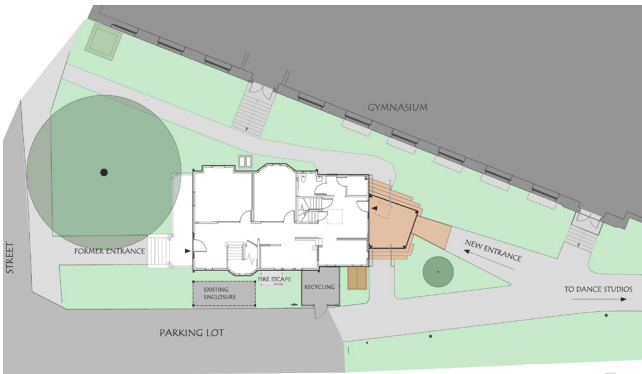
- On the Amherst Town Common
- Next to the Florence Diner

www.collectivecopies.com

BEFORE + AFTER

SMITH COLLEGE: 47 BELMONT

FITCH ARCHITECTURE
& COMMUNITY DESIGN



0 10 20 30 40 50 FT

SITE PLAN

47 Belmont is a 3,166 SF Victorian former dormitory at Smith College, located next to Scott Gym and Mendenhall Center for Performing Arts. The building was renovated to provide new department offices and meeting spaces for Smith's Dance Department. The 3-story Victorian was large enough to house offices for the faculty on the upper floors, while providing a reception area, conference room, and new co-working space (for graduate students) on the first floor, which would become fully accessible. FACD aided the college in the successful application for numerous variances (required by the older structure) to the Massachusetts Architectural Access Board, with the support of the Disability Services Director.

The building was in good structural shape, but needed significant updating. Laura Fitch, Wright Builders, and consultants worked together to develop an air sealing, insulation and HVAC strategy that met the needs of the users for quiet, comfortable spaces. Targeted air sealing, blown-in wall insulation, along with foam and cellulose at the attic resulted in a 54% decrease in air infiltration.

To address campus circulation and connection, the entrance of the building needed to switch from the narrow vehicular street on the south to the main pedestrian paths on the north. The new front porch creates a modern and welcoming link between the new department offices and the three buildings that house campus dance studios. Large skylights in the porch roof and the entry brighten the interior and highlight the sense of welcoming. The juxtaposition of the traditional Victorian house with the contemporary angles of the porch creates an inviting and dynamic introduction to a department that offers a wide variety of traditional, contemporary, and postmodern styles of dance.

DESIGNER BLACK

IT'S NOT A COLOR.
IT'S AN ATTITUDE.

MARVIN
Windows and Doors

Built around you.®



Let us help you turn your blueprints into beautiful spaces. To explore solutions for your next project, contact your Western Massachusetts Marvin Representative:

Stephen Hoyt at 413.923.8321 or shoyt@awhastings.com



5



AFTER

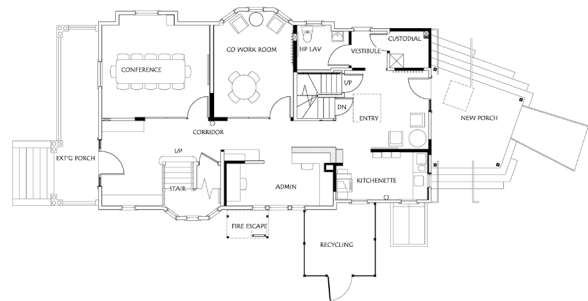
PHOTO: LAURA FITCH AIA



PHOTO: LAURA FITCH AIA



PHOTO: JENNIFER HALE



0 10 15 20 FT

FIRST FLOOR PLAN



ART
Engineering
we build the future.

38 Front Street FL 3 Worcester, MA 01608
t. 508-797-0888 f. 508-797-5130

**mica
blue**
CREATIVE

Julie Waggoner
jwaggoner@micablue.com
413-665-2280

Graphic Design
Web Design
Copy Writing
Photography



Fulfilling a Designers' Mission
Through Leadership and Collaboration.



*Environmentally Responsible
and Resource Efficient*

(413) 586.8287 | wright-builders.com

commercial | institutional | new homes
construction management
additions | renovations | remodels

Rock Solid
Geotechnical Services

www.oto-env.com

O'Reilly, Talbot & Okun
[ASSOCIATES]

Quality, Safety, Experience.
Our people make us more than metal and glass.



255 Interstate Drive
West Springfield, MA 01089
Tel: (413) 733-1111 Fax: (413) 737-6101

Western New England University
Center of the Sciences and Pharmacy



Supporting
the
Architectural
Community

Dennis O'Rourke
dorourke@184.pellapdsn.com



Photo: Dorrie Brooks

Jones Witsett Architects

VIEWED TO BE THE BEST.®

3305630



WMAIA COMMITTEE ON THE ENVIRONMENT UPDATE



The WMAIA Committee On The Environment (COTE) has had a productive first nine months!

Our first official event was a Commercial Energy Code Overview provided in May at UMass. Mark Newey of CET did an excellent job of providing an overview of the new requirements of the recently released energy code, the IECC 2015.

The Green Giants 2017 program is officially open and we are looking for nominations – they are due October 13th! It's a super easy on-line form located on the WMAIA COTE page. This popular awards program honors the work of Trades People, Educators and Owners/Program Directors who help build, teach about, envision and fund green buildings in Western Massachusetts. The WMAIA COTE will be partnering with the Massachusetts Chapter of the USGBC on this third bi-annual event. The Center for Eco Technology is the sponsor this year – Thanks CET! Awards will be presented at the WMAIA annual dinner in December.

In September we had a tour of the Division of Fisheries & Wildlife – Field Headquarters Building in Westborough, MA (photo, left), a 45,000 SF Net-Zero Energy Building. Designed by Architerra, Inc. and built by Columbia Construction, this building is one of the Commonwealth's first state-owned commercial Zero Net Energy Buildings. Conor McGuire, the Director of Sustainability at Columbia, did a presentation and led the tour. In reviewing the buildings energy use and energy production, Conor noted that there are several on-line tools, including one on the National Renewable Energy Laboratory (NREL) website (www.nrel.gov) which allows you to input the building location, potential footprint and anticipated energy use to create a report indicating potential solar power at that site.

Programs in the works include a presentation on the 2030 Commitment/Challenge, and a tour of Bensonwood, in Walpole, NH.

The COTE Committee meets on the first Tuesday of the month from 4:30 to 6pm at Kuhn Riddle Architects' offices in Amherst. Each meeting starts with a Green Bite -- a 10 to 15 minute discussion on a sustainability topic. New members (not just architects) who would like to sit in on a meeting and brainstorm about ways to support and promote sustainable design in our community are always welcome. Please join us at one or all of our meetings!

Aelan B. Tierney AIA, LEED AP BD +C
Co-chair WMAIA COTE

PHOTO: LORIN STARR

KENT HICKS
CONSTRUCTION CO.
Deep Energy Retrofits
Net Zero Homes
413-296-0123

INTERESTED IN ADVERTISING?
CONTACT
DIRECTOR@WMAIA.ORG!

INTEGRITY
DEVELOPMENT & CONSTRUCTION, INC

Amherst, MA 413.549.7919
www.integbuild.com



planning
land surveying
civil engineering
optical alignment
project management
electrical engineering
structural engineering
mechanical engineering



50 Depot Street • Dalton, MA 01226
(413) 684-0925 • Fax (413) 684-0267
e-mail hill@hillengineers.com



FEATURED ARTISAN

MICHAEL HUMPHRIES WOODWORKING

Located in Northfield, Massachusetts, Michael Humphries' fine craftsmanship in wood can be found in homes throughout New England and NYC. Michael Humphries Woodworking works with architects, builders and interior designers to design and create millwork, featuring custom veneers, carving, and complimentary mixed wood species.

Designs range from sleek modern kitchens to traditional dining room breakfronts. Michael Humphries Woodworking, Inc. brings together socially conscious, highly skilled craftsmen to work as an efficient team in an environmentally aware shop for the creation of fine woodwork.

For more information + portfolio please visit www.michaelhumphries.com





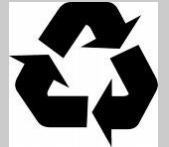
WOULD YOU LIKE TO NOMINATE SOMEONE FOR FEATURED ARTISAN?
EMAIL EDITOR@WMAIA.ORG



AIA Western Massachusetts newsletter

66 RIVER ROAD • LEYDEN MASSACHUSETTS • 01337

Prsrt Std
US Postage
PAID
Permit 183
Greenfield MA



WMAIA PROGRAMS

SAVE THE DATE!

WMAIA ANNUAL MEETING AND WMAIA COTE COMMITTEE/USGBC-MASS GREEN GIANTS AWARDS

(& Old Chapel building tour)

TUESDAY, DECEMBER 5TH

The Old Chapel at UMass/Amherst

Many thanks to our annual dinner sponsor PELLA and to Green Giants sponsor CET



BCT LECTURE SERIES AT UMASS DESIGN BUILDING

MONDAY, OCTOBER 23: 4:00 – 5:00 PM:

HIGH PERFORMANCE BUILDING MATERIALS FOR PASSIVE HOUSE CONSTRUCTION 1 HSW

Oliver Klein, CPHC, LEED AP, 475 Building Supply

MONDAY, NOVEMBER 13: 4:00 – 5:00 PM:

VENTILATION IN AIR-TIGHT BUILDINGS 1 HSW

John Rockwell, Technical Sales Engineer, Zehnder America

WMAIA is providing 1 HSW credit for each program for a nominal fee.

WHERE: 170 Design Building, UMass/Amherst

FREE PARKING is available in LOTS 62 & 63 (adjacent to the building) and LOT 47 (up the street) for program attendees.

ARCHITECTURE THROUGH FILM

FALL
2017

Wednesday, October 11th: LUs 1.5

Citizen Jane (2017)

Wednesday, October 25: LUs 1.5

One Big Home (2016)

Wednesday, November 8th: LUs 1.5

Our Town: Columbus (2012)

Location: Amherst College, Room 117, Fayerweather Hall

Time: 6:30 p.m.

All films are **FREE** and **OPEN TO THE PUBLIC**

WMAIA WOMEN IN ARCHITECTURE

KICK OFF – THURSDAY OCTOBER 12TH AT 5:30PM

Click Workspace, Northampton MA

Join WMAIA Women in Architecture founders Margo Jones FAIA, Kathleen Lugosch FAIA, Ann McCallum FAIA and Sigrid Miller Pollin FAIA for a social event with networking opportunities along with a Pecha Kucha-style presentation featuring lightening talks on the topic of “Inspiration” by women FAIA members of WMAIA.

Many thanks to our sponsor:
MARVIN WINDOWS AND DOORS



REGISTER NOW FOR ABX – DISCOUNT FOR WMAIA!

This year the BSA is extending member pricing to WMAIA members – this includes free entry to the Exhibit Hall if you register by the early bird deadline of October 16th – register here: <http://abexpo.com/Attendee/Register>