

WM | AIA



N  
E  
W  
S  
L  
E  
T  
T  
E  
R

TODD RESIDENCE, SUNDERLAND MA  
AUSTIN DESIGN INC.

WINTER  
2019



LEGISLATORS MEET + GREET



On December 19, 2018 WMAIA and AIA Massachusetts hosted a Meet & Greet to welcome and introduce ourselves to members of the local house and senate delegation. Present were newly elected: Senator Jo Comerford (Hampshire Franklin & Worcester), Representative Natalie Blais (1st Franklin), Representative Dan Carey (2nd Hampshire), Representative Lindsay Sabadosa (1st Hampshire), as well as representatives from the offices of Senator Hinds (Berkshire, Hampshire, Franklin & Hampden) and Representative Mark (2nd Berkshire). It was a great opportunity to talk about the state legislative agenda and local issues relating to the built environment including housing, schools, health care facilities, preservation, zoning and infrastructure and how we can support our representatives' work in Boston. Many thanks to Kuhn Riddle Architects for hosting the event!



Representative Natalie Blais and Senator Jo Comerford (left), joined other legislators and WMAIA members at the December 19th Meet + Greet at Kuhn Riddle Architects.

HON. WMAIA AWARDS 2018



Photo: Sandra Costello



Every two years (even years), WMAIA bestows Honorary Membership upon a person or outside the profession of architecture. This honor may be granted to any person of esteemed character who is otherwise ineligible for membership in the Institute but who has rendered distinguished service to the profession of architecture or to the arts and sciences allied therewith. This year's awards were presented to Julie Waggoner, Principal, Mico Blue Creative, HON WMAIA for "Contributions to the chapter and work with the architecture community in Western Massachusetts" and to Jonathan Lash, former president of Hampshire College, HON WMAIA for "A career devoted to environmental and climate advocacy and for supporting green building initiatives in Western Massachusetts."

IN THIS ISSUE

- ONE LEGISLATOR'S MEET + GREET / HONORARY WMAIA AWARDS
- TWO COVER HOUSE: AUSTIN DESIGN INC. / WMAIA SCHOLARSHIPS 2018
- THREE TO SIX WMAIA DESIGN AWARDS 2018
- SEVEN + EIGHT AMHERST BID BANDSTAND COMPETITION
- ELEVEN + TWELVE BEFORE + AFTER: C&H ARCHITECTS
- THIRTEEN + FOURTEEN FEATURED ARTISAN: LIGHTING BY STICKS + BRICKS
- FIFTEEN WMAIA PROGRAMS

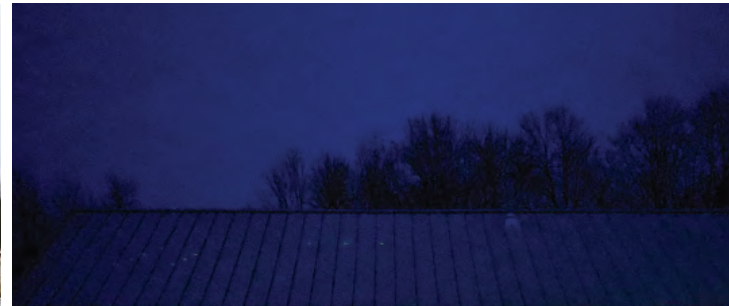
THE WESTERN MASSACHUSETTS CHAPTER OF THE AMERICAN INSTITUTE OF ARCHITECTS

THE WMAIA NEWSLETTER IS PUBLISHED FOUR TIMES A YEAR. IT IS CIRCULATED TO ALL MEMBERS, ADVERTISERS AND SUBSCRIBERS. PLEASE DIRECT ALL NEWSLETTER CORRESPONDENCE TO RACHAEL CHASE, AT EDITOR@WMAIA.ORG. ARTICLES, PHOTOS, NOTICES OF EVENTS AND OTHER INFORMATION ARE WELCOME. OPINIONS EXPRESSED IN THE NEWSLETTER ARE NOT NECESSARILY THOSE OF THE WMAIA.

COVER PHOTOS: TIMBERLY HUND AND HELAINA BALCANOFF OF AUSTIN DESIGN INC. BUILT BY: JPH BUILDING

FROM THIS ISSUE'S COVER: TODD RESIDENCE

AUSTIN DESIGN INC.



WMAIA/AIA NATIONAL STUDENT SCHOLARSHIP



This was the 10th year we have been able to offer student scholarships with the financial support of AIA National. These joint WMAIA/AIA Scholarships are given to two UMass M.Arch students based on submissions of their work. Submissions are judged for design excellence, clarity of presentation and community and/or University engagement by the applicant. We are grateful for this support from National and were pleased to award scholarships to:

- Kinsey Hinrichs Diomedi (\$1000)
- Ashley Lepre (\$500)

WMAIA EXECUTIVE COMMITTEE

PRESIDENT:

LUDMILLA PAVLOVA AIA

PRESIDENT ELECT:

KRISTIAN WHITSETT AIA

TREASURER:

GARTH SCHWELLENBACH AIA

SECRETARY:

JASON NEWMAN AIA

PAST PRESIDENT:

HELEN FANTINI AIA

MEMBERS:

JODY BARKER AIA

KERRY BARTINI AIA

CARYN BRAUSE AIA

CHRISTOPHER NOVELLI AIA

GARRISON PIERS-GAMBLE ASSOCIATE AIA

MORGAN SAWYER AIAS

STEPHEN SCHREIBER FAIA

EXECUTIVE DIRECTOR:

LORIN STARR

NEWSLETTER EDITOR:

RACHAEL CHASE

EMERGING PROFESSIONALS

COORDINATOR

GARRISON PIERS-GAMBLE ASSOCIATE AIA

ARCHITECT LICENSING ADVISOR

JASON NEWMAN AIA

WEBSITE MANAGER

JULIE WAGGONER HON. WMAIA

SOCIAL MEDIA

MORGAN SAWYER AIAS

FILM SERIES

ANDREW BAGGE ASSOCIATE AIA

DISASTER ASSISTANCE COORDINATOR

JOHN ROBINSON AIA

COTE COMMITTEE CO-CHAIRS

AELAN TIERNEY AIA

LAWSON WULSIN ASSOCIATE AIA



HONOR AWARD: A THIN RED LINE

BURR & MCCALLUM ARCHITECTS



**JURY COMMENTS:**  
 "The exteriors of this project are extremely strong. The jury liked the playing with the vernacular, breaking scale to break in some of the utility functions. Simplicity of concept and clean lines carry through the whole project. Figured out how to do pool with no barrier. It's wonderful how you experience the building from the different angles. You can see the clarity of the concept and idea in the result and that's what this project is all about."

Photos: Peter Vanderwarker

MERIT AWARD FOR ARCHITECTURE: KERNAN STUDIO

NAOMI DARLING AIA



**JURY COMMENTS:** "Like the concept and diagrams and the connection of the piers to the ground. There was a conceptual intent...trying something totally different. Pretty unique. Lovely interior. Good use of materials and form for the budget. Good use of natural light." Photos: Sean Kernan

MERIT AWARD FOR LANDSCAPE: EVANS ACADEMIC CENTER & GATES QUAD

BERKSHIRE DESIGN GROUP



**JURY COMMENTS:** "Did just enough landscape to make it really nice. Good restraint – did just enough from concept to articulation of landscape as it relates to the built environment. Information supports itself throughout the presentation. A lot of nice moments and details." Photos: Leigh Chodos



# WMAIA DESIGN AWARDS 2018

CITATION: EAST MEADOW SCHOOL

JONES WHITSETT ARCHITECTS



JURY COMMENTS: "Got accessibility up to a higher level – liked the sectional quality of that. Interiors – resolution was fun. Difficult in a publically funded institutional project to get interest in the interior and they accomplished that. There was a similar intent on the interior and exterior – the landscape will become more dynamic as it grows. Like the lighting throughout. Ceiling nicely detailed." Photos: Peter Vanderwarker

CITATION: WHATELY TOWN HALL

JONES WHITSETT ARCHITECTS



JURY COMMENTS: "Exterior addition blended well. Did a nice job reutilizing space inside the building. Took energy issues seriously. Interiors are great, particularly the way they expose the age of structure. Sensitive, well thought out and detailed. Very well considered." Photos: JWA

CITATION: CROTTY HALL UMASS AMHERST

INTERDISCIPLINARY: SIGRID MILLER POLLIN FAIA WITH STIMPSON LANDSCAPE ASSOCIATES



JURY COMMENTS: "Good example of how in a well conceptualized project the landscape and building work together. Pretty interesting landscape project. The treatment of storm water and rain gardens are well considered. The interior layout is nice particularly the swelling of courtyards and corridors."

Photos: Peter Mauss Esto Photographics / Rain Garden Photo: Ngoc Doan of Stimson Associates

# WMAIA DESIGN AWARDS 2018

CITATION: SOUTH COLLEGE UMASS AMHERST

KLIMENT HALSBAND ARCHITECTS



JURY COMMENTS: "The atrium space sold it! The jury liked the use of material natural light, structure and the connection of new and existing. Some beautiful interiors."

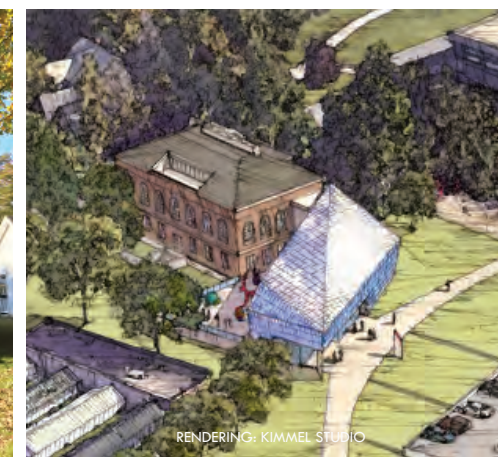
Photos: Robert Benson

## OTHER ENTRIES



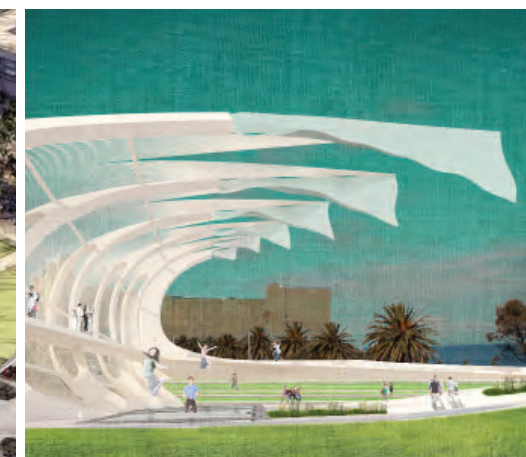
PHOTO: JODY BARKER AIA

FLORENCE RESIDENCE  
JODY BARKER AIA



RENDERING: KIMMEL STUDIO

UNIVERSITY MUSEUM OF CONTEMPORARY ART AT UMASS AMHERST  
KLIMENT HALSBAND ARCHITECTS



WEAVES  
CAROLINA ARAGON



PHOTO: JULIE WAGGONER

SMITH COLLEGE CREW HOUSE  
KUHN RIDDLE ARCHITECTS



PHOTO: JULIE WAGGONER

HINCKLEY RESIDENCE



PHOTO: JULIE WAGGONER

COTTAGE STREET APTS.



OTHER ENTRIES



PHOTO: JOHN SOLEM

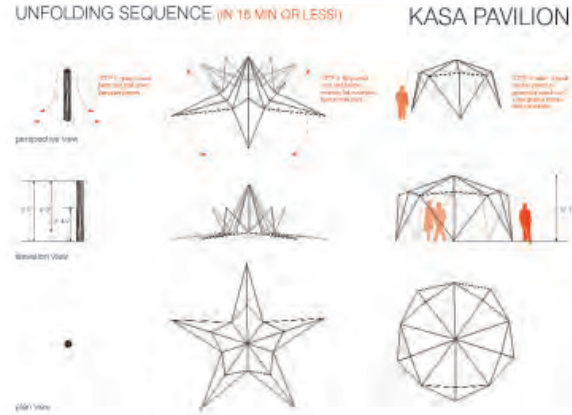


PHOTO: ANDREW HART

NAOMI DARLING AIA: SOLAR TIME + KASA PAVILION



PHOTO: NORTHERN LENS PHOTOGRAPHY



PHOTO: KROKA EXPEDITIONS



PHOTO: FITCH ARCHITECTURE & COMMUNITY DESIGN

FITCH ARCHITECTURE + COMMUNITY DESIGN: RAVENS ROOST COHOUSING, FARM BARN, SMITH COLLEGE DEPARTMENTAL OFFICES



PHOTO: NAT REA

C&H ARCHITECTS: LOW IMPACT, HIGH END HOUSE



PHOTOS: DODSON & FLINKER / ED WONSEK ARTWORKS INC.

DODSON & FLINKER: IRWIN M. JACOBS ELEMENTARY SCHOOL



PHOTOS: PETER PEIRCE



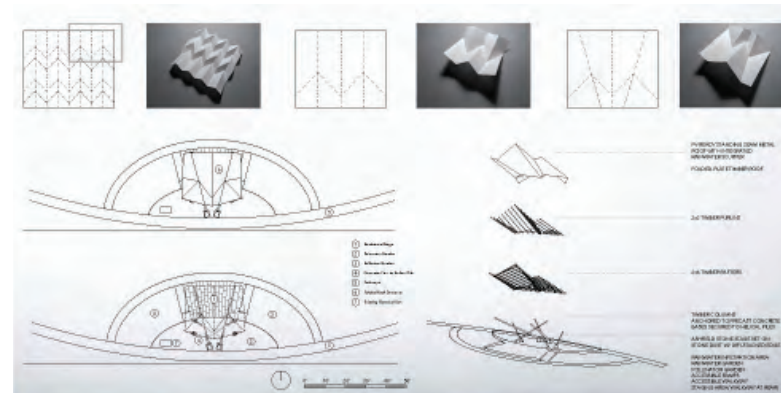
PHOTOS: PETER PEIRCE



PHOTOS: PETER PEIRCE

STEPHEN GERARD DIETEMANN AIA: PRIVATE RESIDENCES

This fall the Amherst BID (Business Improvement District) sponsored a design competition for an outdoor performance venue on the Amherst Common. The results are in. Naomi Darling AIA and Ray Mann AIA's submission was the jury's pick. C&H Architects won the People's Choice and Tulio Inglese of TIA was the Runner Up.



NAOMI DARLING AIA + RAY MANN AIA

JURY WINNER

This bandshell proposal is for a community that both cherishes its past but has always looked forward to the new. Its acoustically and structurally logical shell focuses and modulates music, song and speech in an elegant, garden-like setting.

Origami-folded structures – the back-and-forth pleating of a flat plane—yield excellent acoustical characteristics. Our bandshell takes shape as if from a single folded sheet of paper. Constructed out of engineered timber the warm-toned tightly slatted surface merges seamlessly with mast-like struts that cantilever the shell from the rear, leaving the gently-curved stage of dark grey Ashfield stone open and unobstructed.

Ambient LED up-lighting is embedded in the stage and garden areas, while stage lighting, sound and security are integrated into the bandshell structure along with rooftop PV. Columns are supported economically with precast concrete bases anchored by helical piles.

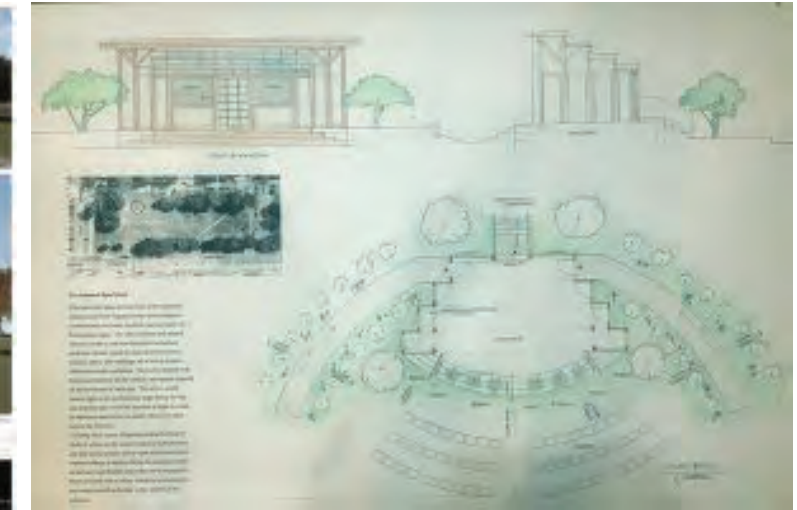
The shell's geometry furthermore funnels precipitation into a rainwater garden that becomes a backdrop to the stage. Proposed walkways reflect the spirit of the original Olmstead plan while also providing a paved transition from the street and accessible routes to the stage. Grassy areas are otherwise maximized to retain the informal charm of the common.

PEOPLE'S CHOICE



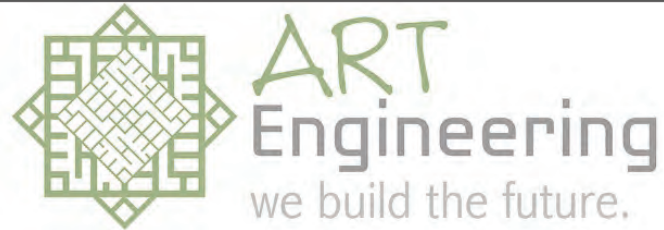
C&H ARCHITECTS WITH GUY VIGNEAU

RUNNER UP



TULIO INGLESE





38 Front Street FL 3 Worcester, MA 01608  
t. 508-797-0333 f. 508-797-5130



**Western Builders, Inc.**  
General Contractors since 1975 focusing on Academic, Commercial, Historical Renovation, Healthcare & Senior Living Facilities

73 Pleasant St. Granby, MA 01033  
413 467 9171  
westernbuilders.com



**Rock Solid**  
Geotechnical Services  
www.oto-env.com  
**O'Reilly, Talbot & Okun**  
[ ASSOCIATES ]



**mica blue**  
CREATIVE  
Julie Waggoner  
jwaggoner@micablue.com  
413-665-2280  
Graphic Design  
Web Design  
Copy Writing  
Photography



Supporting  
the  
Architectural  
Community

Dennis O'Rourke  
dorourke@184.pellapdsn.com



Photo: Lisa Volmer

Dana Bixby Architecture Montessori School, Lenox MA

**VIEWED TO BE THE BEST.®**

Fulfilling an Owner's Mission Through Leadership and Collaboration.



designLab Architects | The Hitchcock Center for the Environment

commercial | institutional | new homes | additions  
renovations | remodels | construction management

(413) 586.8287 wright-builders.com



*Providing Expert Environmental Services in Western Mass. for Over 25 Years!*

- Hazardous Building Materials
- Asbestos, Lead Paint, PCBs
- Indoor Air Quality Programs
- Industrial Hygiene Services
- LSP Services
- Due Diligence Services
- Soil & Groundwater Remediation
- Management Planning & Compliance
- Emergency Spill Response
- AHERA Compliance Services



See the following Contract User Guide:  
PRF67 Designated DCAMM  
Environmental Engineering,  
Diagnostics, and Testing

**KENT HICKS**  
CONSTRUCTION CO.

**Passive Perfection**  
Net Zero Living Designed for New England  
+ Healthy Homes + Deep Energy Retrofits  
+ Passivhaus + Historic Restorations

KENTHICKS.CONSTRUCTION.COM 413.296.0123

**MASS MoCA** ANISH KAPOOR ON VIEW NOW



Anish Kapoor is known for creating sculptures with extraordinary surfaces that pull viewers in, encouraging close looking. Varying widely in scale and incorporating materials from stone and earth to silicone and PVC, his work combines formal precision with innovative engineering and a precise use of optics and reflectivity.



planning  
land surveying  
civil engineering  
optical alignment  
project management  
electrical engineering  
structural engineering  
mechanical engineering



50 Depot Street • Dalton, MA 01226  
(413) 684-0925 • Fax (413) 684-0267  
e-mail hill@hillengineers.com

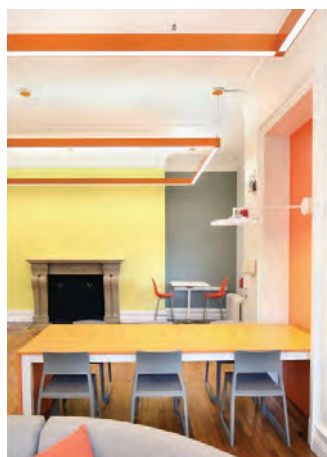
**INTEGRITY**  
DEVELOPMENT & CONSTRUCTION, INC.



Amherst, MA 413.549.7919  
www.integbuild.com

INTERESTED  
IN  
ADVERTISING?  
CONTACT  
DIRECTOR@WMAIA.ORG!





**PROFESSIONAL  
CONSTRUCTION  
SERVICES**

- New Construction
- Remodeling
- Additions

Florence, MA • 413-586-8600  
KeiterBuilders.com



C&H was asked by Amherst College to work with the interior design firm Parker Torres to update select community spaces within three existing residence halls – Moore, Plimpton and Valentine. The goal was to better support community interaction and livability for the students, and to provide a fresh interpretation of the existing interior architecture.

At Moore and Plimpton, the existing spaces all received new finishes, lighting, layouts, and furnishing to better support the way today's students gather to study and relax. In Valentine Hall we created a new lounge space and laundry, updated the existing bathrooms, and activated a roof deck with new new finishes including built-in seating and lighting.

C&H worked closely with Amherst College, Morgan Studio and Parker Torres to design and deliver the projects on a condensed timeline.



FEATURED ARTISAN: LIGHTING BY STICKS + BRICKS



FEATURED ARTISAN: LIGHTING BY STICKS + BRICKS



“My favorite pieces are minimal, deliberate, and organic. I love to use reclaimed elements, because they do so much of the work for me. Once taken out of their expected environments, they can be seen from a fresh perspective. Utilitarian details become a beautiful challenge; What to save? What to highlight? How to incorporate? In the end, something mundane looks fresh and interesting. It’s old, but it’s also new.”  
Liz Karney of Sticks + Bricks, Northampton MA [www.sticksandbrickshop.com](http://www.sticksandbrickshop.com)

Discover

HOW WINDOWS AND DOORS CAN MAKE THE DIFFERENCE.



DESIGNING A NEW HOME OR REMODELING AN EXISTING SPACE?  
LET’S EXPLORE SOLUTIONS FOR YOUR NEXT PROJECT.  
Jason Chizmar at 802.760.7925 or [jchizmar@awhastings.com](mailto:jchizmar@awhastings.com)

**MARVIN**  
Windows and Doors  
Built around you.®

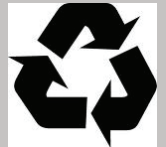




# AIA Western Massachusetts newsletter

71 SOUTH MAIN STREET SUNDERLAND MASSACHUSETTS 01375

Prsrt Std  
US Postage  
PAID  
Permit 183  
Greenfield MA



## WMAIA PROGRAMS WINTER 2019

### COTE Committee

Upcoming Dates for  
COTE Committee Meetings:  
Tuesday, February 12  
Tuesday, March 12  
4:30 PM at the offices of  
Kuhn Riddle Architects

### BCT Lecture Series

The BCT Lecture Series resume on Monday, February 11 with Ezra Small on  
“Measuring Sustainability and Implementing Sustainable Systems at UMass Amherst”  
Save these dates for the Lecture Series (more info soon!)  
Mondays: February 11 / March 4 / March 25 / April 22

### WMAIA/5-College Architecture Film Series

Film series will resume in late February/ early March

## Thanks to WMAIA's 2018-19 Sponsors and Corporate Affiliate Members!

### COPPER SPONSORS



### BRONZE SPONSORS



### CORPORATE AFFILIATE MEMBERS, PROGRAM SPONSORS & ADVERTISERS:

Allegrone Companies • Berkshire Design Group Inc. • c & h architects • Chandler Architectural Products • Cowls Building Supply  
Dodson & Flinker Inc • Eco-Genesis Corp. • EDM Services Inc. • Engineering Design Associates • Engineering Ventures • Hesnor Engineering Assoc.  
Hill Engineers, Architects & Planers • Lexington Group Inc. • LP Adams Co. Inc. • MicaBlue Creative • MJ Moran • NL Construction • National Vinyl LLC  
Olander Brick • Poole Professionals • Porter & Chester Institute. • Renaissance Builders • Ryan Hellwig PE • Sierra Pacific