

W M | A I A



N  
E  
W  
S  
L  
E  
T  
T  
E  
R

HOUSATONIC ARCHITECTURE  
BARN TO POOLHOUSE CONVERSION  
STOCKBRIDGE MASSACHUSETTS

SUMMER  
2019

**PRESIDENT'S REPORT FROM AIA 2019 NATIONAL CONVENTION**

**LEARNING FROM LAS VEGAS: LUDMILLA PAVLOVA-GILLHAM AIA**

The AIA National Blueprint for Better campaign intensified this year in Las Vegas by deepening its focus on diversity, equity, community engagement and sustainability, in a city that personifies the contradictory role that architecture plays in American culture and history. At the start of the conference the weather in Las Vegas was 102 degrees with hot wind blowing off the desert, making it easy to understand why this city, much like Hong Kong, Shenzhen and Beijing, privileges vehicular transport on the ground plane. Pedestrians rely on mechanically controlled interiors for human habitation during the day and come out onto the streets at night, drawn by the profusion of electrical signage and entertainment iconography that is the hallmark of Las Vegas casinos, arts and sports venues (including lush golf courses irrigated at night). The conflict between consumption and conservation was starkly on display.

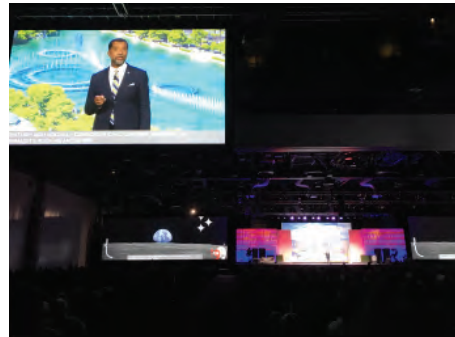
AIA President William Bates FAIA began with an overview of two centuries of radical efforts to prevent corporate pillaging of the common good and to change society for the better by advancing the economic security, health and safety of workers, promoting gender and racial diversity, and protecting the environment. He celebrated muckrakers and visionaries such as Sinclair Lewis, Rachel Carson and Martin Luther King Jr., emphasizing that today more than ever “we are called to put an end to systemic injustice once and for all.” With this as a backdrop, Bates celebrated AIA’s endorsement of the proposed Green New Deal 1 : “By investing in infrastructure, upgrading the existing building stock, and improving resilience in the built environment,” he declared, “we can make progress towards AIA’s 2030 Commitment goals”.

The AIA Business Meeting approved resolutions that: i) improved the institute’s long term stability; flexibility by providing a process to spend funds from institute reserves in time of need; ii) supported ethical practice by developing a process for vetting award candidates and addressing any possible character issues and allegations; and iii) committed to resolve questions on international strategy by AIA’20. Finally, a resolution on Urgent and Sustained Climate Action, brought to the floor by Betsy Delmonte of Texas, drew impassioned support from emerging professionals and Sustainability Leadership Group advocates such as Bob Berkebile FAIA (“The future of the human story will be written in the next decade”) and Jean Caroon FAIA (“It is a moral imperative for us to use our design skills and address the urgent problem of climate change”). The resolution, calling for members to “exponentially accelerate the de-carbonization of buildings, the building sector, and the built environment,” passed with 4,860 yes votes, 312 no, and 28 who abstained. To make climate resolution official AIA policy, the Board of Directors must still approve the measure. Marsha Maytum, Chair of the AIA Committee on the Environment (COTE), noted that the vote is not an end in itself, but “a call to action.” Additional work will include expanding the focus of carbon reduction beyond building operations to encompass embodied carbon, supporting more stringent energy codes, and outreach to clients, policy makers, and the public.

On a personal note, among the many educational sessions and networking conference activities, I particularly enjoyed celebrating with Payette, who won the 2019 AIA Architecture Firm Award with the majority of their staff on the stage, and at a party during the convention. Their team spirit, collegiality and commitment to sustainable design was exceptional.



The Strip: Bally’s and Paris Casinos



The AIA’19 Convention Keynote by President William Bates FAIA



Las Vegas Downtown at night



Payette Architecture Firm Award celebration

**IN THIS ISSUE**

- ONE** AIA NATIONAL: LEARNING FROM LAS VEGAS
- TWO** AMHERST COLLEGE SCIENCE BUILDING WINS AWARD
- THREE TO FIVE** UMASS THESIS STUDENTS 2019
- FIVE TO EIGHT** FIVE COLLEGE STUDENT WORK 2018-2019
- TEN** WMAIA SURVEY RESULTS
- TWELVE** IN THE WORKS: METCALFE ASSOCIATES ARCHITECTURE
- THIRTEEN + FOURTEEN** FEATURED ARTISAN: BERKSHIRE PRODUCTS
- FIFTEEN** WMAIA PROGRAMS

**THE WESTERN MASSACHUSETTS CHAPTER OF THE AMERICAN INSTITUTE OF ARCHITECTS**

THE WMAIA NEWSLETTER IS PUBLISHED FOUR TIMES A YEAR. IT IS CIRCULATED TO ALL MEMBERS, ADVERTISERS AND SUBSCRIBERS. PLEASE DIRECT ALL NEWSLETTER CORRESPONDENCE TO RACHAEL CHASE, AT EDITOR@WMAIA.ORG. ARTICLES, PHOTOS, NOTICES OF EVENTS AND OTHER INFORMATION ARE WELCOME. OPINIONS EXPRESSED IN THE NEWSLETTER ARE NOT NECESSARILY THOSE OF THE WMAIA.

COVER PHOTOS: JURIS MARDWIG

**FROM THE COVER: HOUSATONIC ARCHITECTURE, LLC., HOUSATONIC MA**

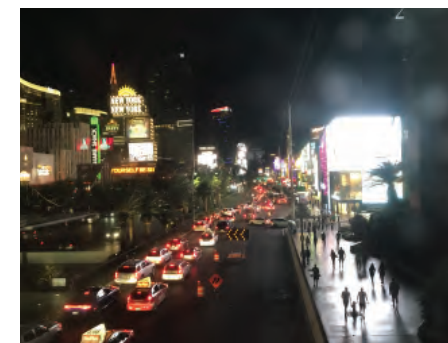


**AMHERST COLLEGE SCIENCE CENTER WINS AIA COTE TOP TEN AWARD**

Congratulations to Payette and Amherst College (and the College’s Facilities staff including WMAIA member Tom Davies AIA, Director of Design and Construction) for recognition in the AIA’s Top Ten COTE Awards, which are conferred by AIA’s Committee on the Environment. Each year, the program recognizes 10 projects that integrate design excellence and environmental performance.



© Chuck Choi, courtesy of Payette



The Strip at night



Downtown Las Vegas - Container Park



Adaptive Restoration: Best Bar-B-Q

**WMAIA EXECUTIVE COMMITTEE**

**PRESIDENT:**

LUDMILLA PAVLOVA AIA

**PRESIDENT ELECT:**

KRISTIAN WHITSETT AIA

**TREASURER:**

GARTH SCHWELLENBACH AIA

**SECRETARY:**

JASON NEWMAN AIA

**PAST PRESIDENT:**

HELEN FANTINI AIA

**MEMBERS:**

JODY BARKER AIA

KERRY BARTINI AIA

CARYN BRAUSE AIA

CHRISTOPHER NOVELLI AIA

GARRISON PIERS-GAMBLE ASSOCIATE AIA

MORGAN SAWYER AIAS

STEPHEN SCHREIBER FAIA

**EXECUTIVE DIRECTOR:**

LORIN STARR

**NEWSLETTER EDITOR:**

RACHAEL CHASE

**EMERGING PROFESSIONALS**

**COORDINATOR**

GARRISON PIERS-GAMBLE ASSOCIATE AIA

**ARCHITECT LICENSING ADVISOR**

JASON NEWMAN AIA

**WEBSITE MANAGER**

JULIE WAGGONER HON. WMAIA

**SOCIAL MEDIA**

MORGAN SAWYER AIAS

**FILM SERIES**

ANDREW BAGGE ASSOCIATE AIA

**DISASTER ASSISTANCE COORDINATOR**

JOHN ROBINSON AIA

**COTE COMMITTEE CO-CHAIRS**

LAURA FITCH AIA

AELAN TIERNEY AIA

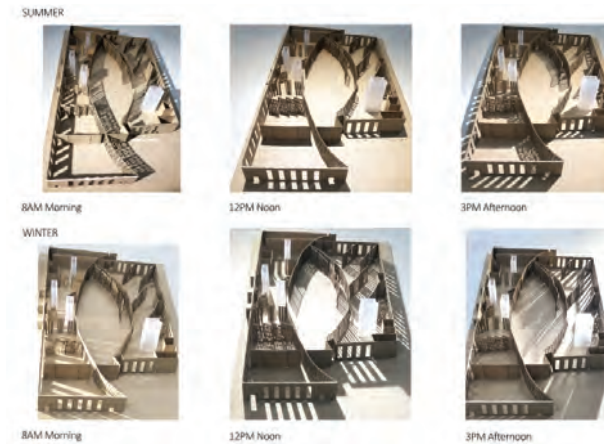
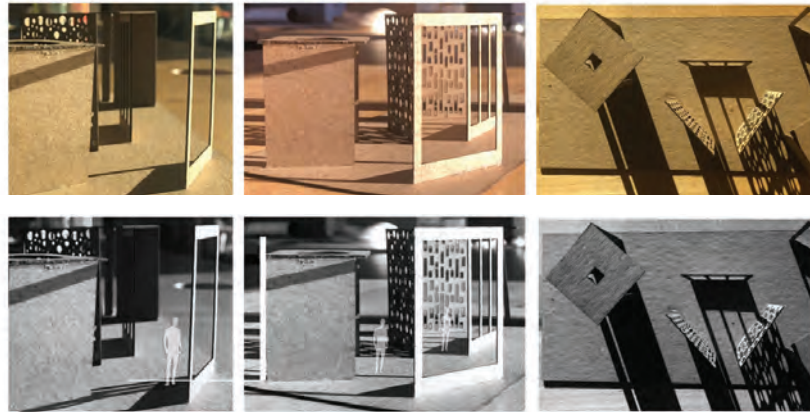
# CONGRATULATIONS UMASS M.ARCH STUDENTS!

Department of Architecture  
at the University of Massachusetts Amherst

## RAGHAD ALRASHIDI

### THERAPEUTIC COMMUNITY: FOR REFUGEES

Thesis Advisor: Kathleen Lugosch FAIA



## KINSEY DIOMEDI

### (RE)DEVELOPING PLACE

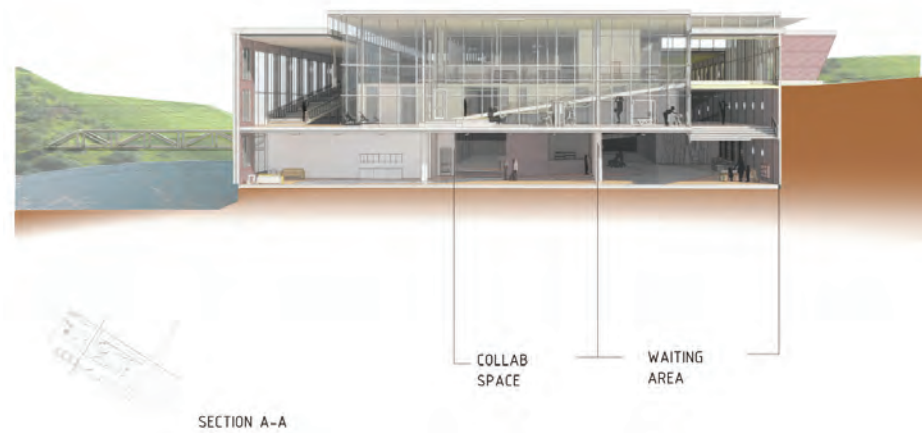
Thesis Advisor: Erika Zekos Assoc. AIA



## SENADA DUSHAJ

### RETHINKING AMBULATORY CARE

Thesis Advisors:  
Pari Riahi AIA



## MASTER OF ARCHITECTURE

# CONGRATULATIONS UMASS M.ARCH STUDENTS!

## KAELI HOWARD

### PHOTOSYNTHESIZING THE WORKPLACE: A STUDY IN HEALTHY AND HOLISTIC PRODUCTION SPACES

Thesis Advisor: Ray Mann



## CUNBEI JIANG

### MUSEUM DESIGN AS A TOOL FOR A CITY

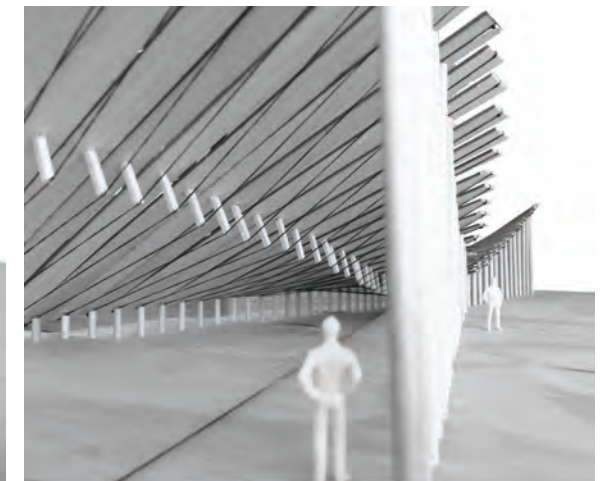
Thesis Advisor:  
Philip Tidwell



## ASHLEY LEPRE

### ARCHITECTURE AND WILDERNESS: AN EXCHANGE OF ORDER

Thesis Advisors:  
Philip Tidwell



# CONGRATULATIONS UMASS M.ARCH STUDENTS!

Department of **A**rchitecture  
at the University of Massachusetts Amherst

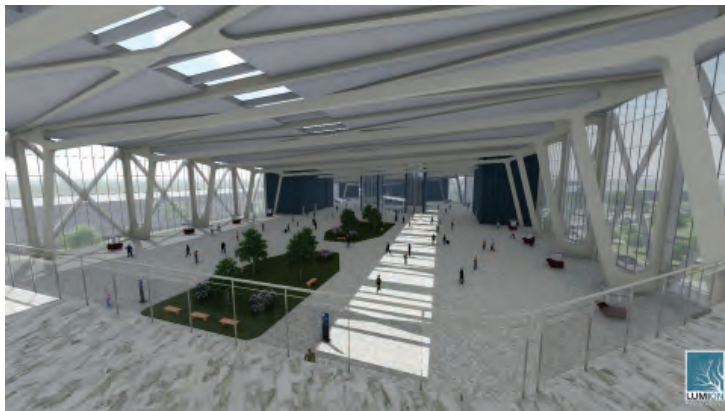
## JAKE PORTER CROSS SPECIES ARCHITECTURE: DEVELOPING AN ARCHITECTURE FOR REHABILITATIVE LEARNING THROUGH THE HUMAN-CANINE RELATIONSHIP

Thesis Advisor: Caryn J. Brause AIA



## GUY VIGNEAU INTERMODAL TRANSIT TERMINAL: INTEGRATING THE FUTURE OF TRANSIT INTO THE URBAN FABRIC

Thesis Advisor: Ajla Aksamija AIA



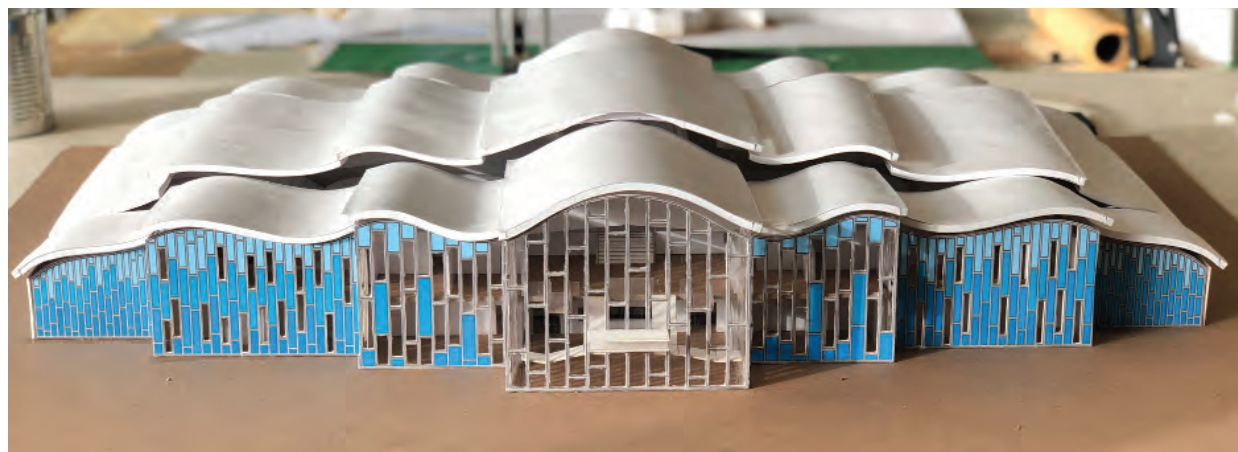
## STUDENT WORK: WILLIAMS COLLEGE

KYUNG TAEK (DAVID) LEE

Professor:  
Ben Benedict

The Tacoma Twin Rinks will be a skating rink remodeled from an indoor soccer arena.

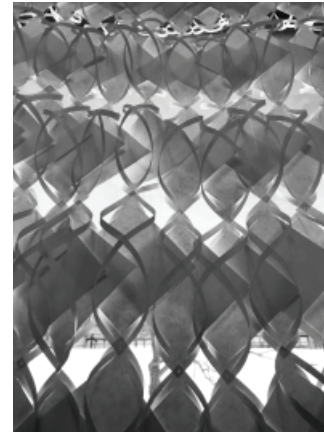
Taking into consideration the large population of Korean Americans of Tacoma, Washington, the design of the building was inspired by giwasjang, traditional Korean roof tiles. The wavelike form created by the converging and diverging roofs create openings for natural light filtered through translucent glass.



## STUDENT WORK: FOLDED PLANES PROJECT UMASS + MOUNT HOLYOKE COLLEGE + HAMPSHIRE COLLEGE

MOUNT HOLYOKE COLLEGE

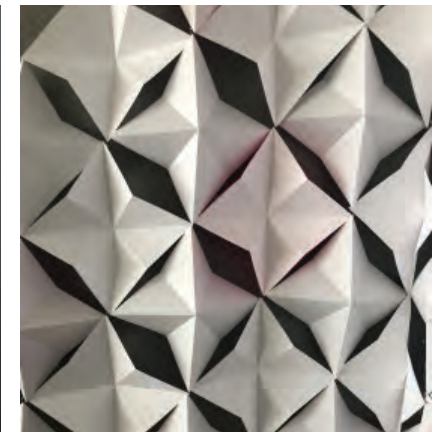
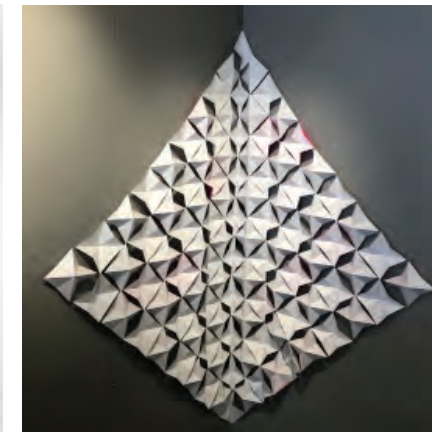
PROFESSOR: NAOMI DARLING AIA



Ezgi Yilmaz



Kate Dutilly



UMASS AMHERST

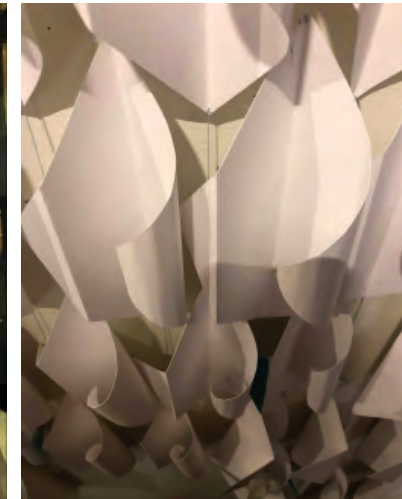
PROFESSOR: ERIKA ZEKOS ASSOC. AIA



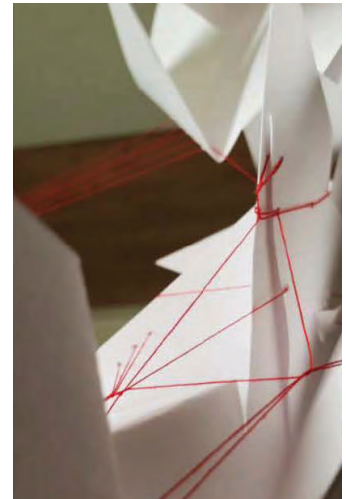
Nicholas Martin



Tamara Malhas



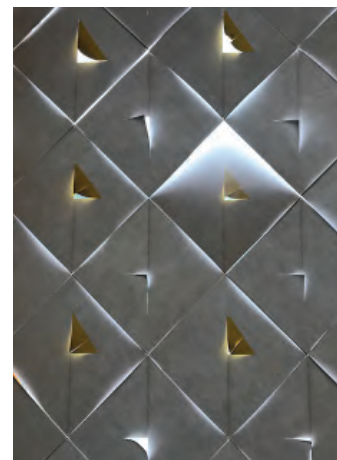
Victoria Wilson



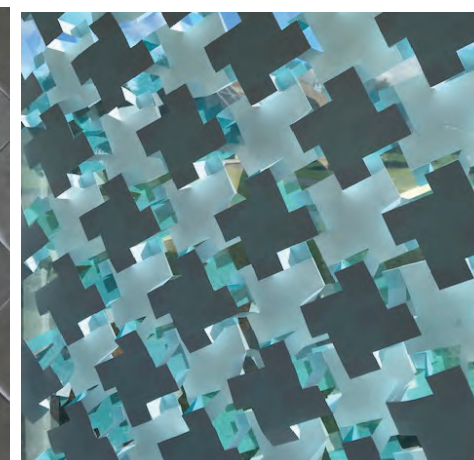
Pranav Amin

HAMPSHIRE COLLEGE

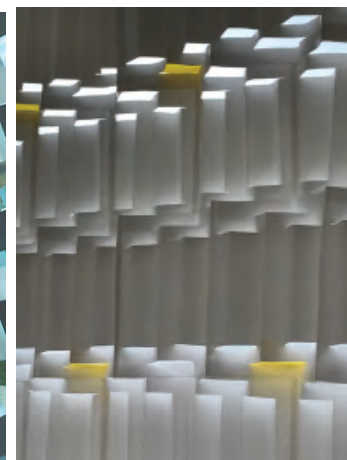
PROFESSOR: RACHAEL CHASE



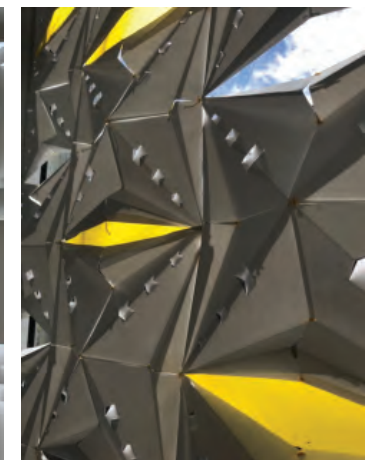
Elise Malvicini



Samiha Tasnin



Freddi Whitall



Jude Lawrence

In the Folded Planes Project, students were asked to identify a dynamic concept word and to develop a study of folded paper modules to embody that concept. Each student folded and assembled one-hundred modules to create a site-specific screen that would modify light, view, and/or movement.

LIVING  
BETTER

---

IS IN THE DETAILS.



LET'S EXPLORE SOLUTIONS FOR YOUR  
NEXT WINDOW AND DOOR PROJECT.

Jason Chizmar at 802.760.7925 or [jchizmar@awhastings.com](mailto:jchizmar@awhastings.com)



PROFESSIONAL  
CONSTRUCTION  
SERVICES

- New Construction
- Remodeling
- Additions

Florence, MA • 413-586-8600  
[KeiterBuilders.com](http://KeiterBuilders.com)



New Home, Leeds, MA

STUDENT WORK: MAKER'S STUDIO AT MOUNT HOLYOKE  
PROFESSOR: NAOMI DARLING AIA



Following the rise in CAD/CAM there has been a burgeoning Maker movement as more and more individuals have rediscovered the joys (and sometimes frustrations) of realizing projects within a collaborative environment. This spring Mount Holyoke College opened the Fimbel Maker & Innovation Lab to "provide the resources to support novices and experts alike as they turn their ideas into tangible reality." The rise of digital fabrication processes has blurred the traditional division of labor enabling architects and designers not only to draw but to also fabricate projects, often using the very same programs. Using the Makerspace, my class introduced students to both traditional and digital making through a series of individual exercises that culminated in a collaborative group project to make a reception desk for the new Makerspace in Prospect Hall.



**KENT HICKS**  
CONSTRUCTION CO.

- High Performance Details
- Low Embodied Carbon and Healthy Materials
- Affordable Efficiency



KNOWLEDGE, EXPERIENCE, COLLABORATION

**KENTHICKS**CONSTRUCTION.COM 413.296.0123



38 Front Street FL 3 Worcester, MA 01608  
t. 508-797-0333 f. 508-797-5130

Fulfilling an Owner's Mission Through  
Leadership and Collaboration.



designLab Architects | The Hitchcock Center for the Environment

commercial | institutional | new homes | additions  
renovations | remodels | construction management

(413) 586.8287 wright-builders.com



Julie Waggoner  
Affiliate WMAIA  
jwaggoner@micablue.com  
413-665-2280

Graphic Design  
Web Design  
Copy Writing  
Photography



## WMAIA Survey

Most Important to Chapter Survey Participants

## WMAIA SURVEY RESULTS



### Member Benefits

Continuing education including:  
**Lectures, Seminars,  
Workshops, Tours**  
were most valued



### Education Topics

Members were most  
interested in **Energy**  
as a topic for  
**Continuing Education**



### Chapter Priorities

Top priorities for the next  
3 years include:  
developing more  
**Professional Practice,  
Career Development, and  
Leadership Programming**



### Communication

**E-news** was the most  
valuable form of  
communication with the  
**Newsletter** as a close second

Undertaken at the end of 2018, the WMAIA Board surveyed members to better understand what services and activities offered by the chapter were deemed valuable. Part of this desire to hear directly from members was linked to the tri-yearly accreditation process with AIA National which includes a need to restate our chapter goals for the coming years. But the survey was also conducted done as a check to see if the chapter's goals and actions are in alignment with those of our members. So what did we learn?

Sixty-six (66) members responded. Put into perspective, WMAIA has 179 architect members (AIA, associate and emeritus) and 37 affiliates (corporate, individual and honorary). So 37% of architect members, or 30% of the overall membership responded – that's a pretty amazing level of participation!

A big takeaway, and one that was not very surprising, was the confirmation that continuing education, such as lectures, seminars, workshops and tours were highly valued. Also valued were our honors and awards programs, our public outreach and engagement activities such as exhibitions, competitions, and SDATs, and participation in knowledge communities. Additionally, members valued our support for emerging professionals and our government advocacy work. AIA National benefits were deemed not as important - this is a locally loyal group.

A real surprise revealed by the survey data was the number of members that serve as elected or appointed officials - 16; and/or on a non-profit board or committee - 22; very impressive, WMAIA! These varied from local expertise-related roles such as planning board, zoning board, and historical commission members to state-wide, regional and national roles. Our work on these boards is a tangible and personal means of public engagement.

In terms of tailoring our future programs towards member interests, respondents were asked about interest in subject areas that are in alignment with AIA's existing knowledge communities and program activities. WMAIA members were very interested in programming that addresses materials, energy, sustainability and resilience, accessibility and inclusive design, as well as preservation, technology, business of architecture, and mentoring. There was less interest (rated 3.5 or lower on a scale of 1 to 5) in programming addressing design for health, residential design, leadership, research, and urban planning.

When asked about priorities for the chapter for the next three years, several goals were ranked highly, including the development of more thematic programming and knowledge sharing; more professional practice, career development, and leadership programming; more opportunities for public outreach and activities that promote the profession; and more opportunities for community engagement, including providing services for communities and groups underserved by the architectural community.

As for communication methods, respondents most valued the e-news, but also highly valued the print newsletter and website. Social media was not particularly valued, which is a good segue to the information gathered on the experience level of survey participants. The average number of years in architectural practice for our survey respondents was 25 years, or very experienced! Very few responses were obtained in the 5 years and less category. This tells us that we have work to do to ensure that we are serving and engaging younger practitioners and emerging professionals in a meaningful way.

Several members took the opportunity to thank the board and single out Lorin's amazing effectiveness as Executive Director. The Board would like to thank everyone for their participation in this effort.



**NORTHEAST 3D**

## 3D DOCUMENTATION FOR ARCHITECTURE

Full Service Technical Imaging and 3D/VR immersive scanning for Architects and Designers. Streamline the way you document existing conditions, as built, and finished spaces. Create extraordinary marketing assets.

- 3D** 3d Scanning of Existing Conditions and As-Builts
- Aerial Drone Photography and Video
- Interactive Content for Design and Sales

Serving NY, MA, NH, VT, CT    Contact us 413-464-1961    [northeast-3d.com](http://northeast-3d.com)

Christa McAuliffe Library

# IN THE WORKS METCALFE ASSOCIATES ARCHITECTURE



“236” Pleasant Street Northampton by Metcalfe Associates Architecture was inspired by Sarah Aphrodite Stolwijk, a renowned fashion designer who will make clothes in her store “Black Cat”.

The developer D. A. Sullivan & Sons will build rental apartments subsidized by Condominium sales above them as sold by Craig Della Penna. The design honors the evolution of “Architecture the Mother of the Arts” as its environments do shape the living systems within them. Cities must follow direction in the evolving stimulus to civilization found in sustainable buildings.

We must build without creating false history. Historic preservation is just as essential as Contemporary Architecture’s positive environmental affects.




Supporting the Architectural Community

Dennis O'Rourke  
413-772-9096  
[dorourke@pellasales.com](mailto:dorourke@pellasales.com)

**VIEWED TO BE THE BEST.®**

Great Barrington, MA  
Bershire Design Inc



planning  
land surveying  
civil engineering  
optical alignment  
project management  
electrical engineering  
structural engineering  
mechanical engineering

Hill  
engineers  
architects  
planners

50 Depot Street • Dalton, MA 01226  
(413) 684-0925 • Fax (413) 684-0267  
e-mail [hill@hillengineers.com](mailto:hill@hillengineers.com)




Providing Expert Environmental Services In Western Massachusetts For Over 25 Years!

- Hazardous Building Materials
- Asbestos, Lead Paint, PCBs
- Indoor Air Quality Programs
- Industrial Hygiene Services
- LSP Services
- Due Diligence Services
- Soil & Groundwater Remediation
- Management Planning & Compliance
- Emergency Spill Response
- AHERA Compliance Services

See the following Contract User Guide:  
**PRF67 Designated D CAMM**  
Environmental Engineering, Diagnostics, and Testing

**STATEWIDE CONTRACT**

Office Location: Pittsfield, MA    Email: [scott@ecogenesis.com](mailto:scott@ecogenesis.com)

**413-445-7756 • [www.ecogenesis.com](http://www.ecogenesis.com)**

**FEATURED ARTISAN:  
BERKSHIRE PRODUCTS - SHEFFIELD, MASSACHUSETTS**

*BERKSHIRE PRODUCTS SPECIALIZES IN LARGE, LIVE EDGE WOOD SLABS, USED BY MANY ARTISANS TO CREATE ONE-OF-A-KIND PIECES.*

**HOW DO YOU WORK ON YOUR CRAFT WITHIN THE WESTERN MASSACHUSETTS COMMUNITY?**

We have a relationship with many woodworkers in Massachusetts. We carry slabs small enough for shelves or cutting boards and large enough for 20' long conference tables!

**DOES SUSTAINABILITY PLAY A ROLE IN YOUR BUSINESS?**

Almost all our logs come from non-logging operations. Most are from arborists and tree service companies doing tree removals because the trees are dead, dying, or structurally unsound. Standard sawmills usually cannot process these logs due to their large size, but we have special equipment so we can. We are also installing solar panels this year that will provide 50% of our electrical needs. We heat our buildings and lumber dryers with wood scraps and logs that are not suitable for sawing.

**IS THERE A WAY IN WHICH YOU WOULD LIKE TO WORK WITH LOCAL ARCHITECTS AND DESIGNERS THAT HASN'T HAPPENED YET? WHAT WOULD THAT BE?**

Just to continue spreading the word about our existence and let people know they are always welcome to come visit! Most of our customers shop through our website because choosing from thousands of slabs can feel a little overwhelming. But it is so amazing and fun to see them all side-by-side in person; so many species, colors, shapes, and sizes to pick from. We have four large buildings with aisles of slabs in vertical standing stacks for designers to browse, alone or with their clients, at their leisure. If they come during the week, chances are they will find the guys processing the slabs on site at our sawmill, vacuum kiln, flattening, or photographing.

**WHAT'S YOUR FAVORITE PART OF YOUR CREATIVE PROCESS? CAN YOU DESCRIBE YOUR PROCESS?**

Milling logs into these large slabs – Some of the most beautiful slabs are cut from not-so beautiful logs. It is like cutting a diamond in the rough; you never really know what you are going to find inside. Each slab is unique, even if it is cut from the same log.



English Elm Twin Beds, Ian Ingersoll Cabinetmakers



Walnut Burl Coffee Table  
Gary A. Leake Woodworker

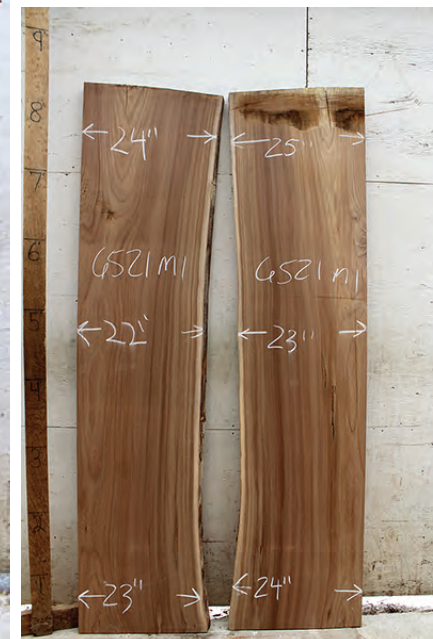


Big Leaf Maple Headboard, Batten Goods



Claro Walnut Chaise, DBO Home

**FEATURED ARTISAN:  
BERKSHIRE PRODUCTS - SHEFFIELD, MASSACHUSETTS**



English Elm Table with Bronze legs, Jeff Soderburgh



Claro Walnut "Stance" Dining Table, JAW Woodshop






# AIA Western Massachusetts newsletter

71 SOUTH MAIN STREET SUNDERLAND MASSACHUSETTS 01375

Prsrt Std  
US Postage  
PAID  
Permit 183  
Greenfield MA



 **AIA New England Conference & Design Awards**  
**SAVE THE DATE**



the future is  
**NOW**

**Conference · Saturday 10.05.2019**

amherst ma

hosted by aia western massachusetts

## Latest BBRS News

(Board of Building Regulations and Standards)

### IMPORTANT Building Code Update

The BBRS has voted to implement the 2021 ICC with Massachusetts amendments as the 10th Edition of 780 CMR Massachusetts State Building Code (rather than implement the 2018 ICC codes as the 10th Edition). The administration has committed to seeing this implemented on January 1, 2021.

What will be issued for implementation on January 1, 2020 includes but is not limited to the following amendments:

- + Tiny homes
- + Micro units
- + Manufactured Buildings, Building Components and Mobile Homes
- + Adoption of 2018 IECC Energy Code  
(and maybe the Stretch Code changes)
- + Concrete testing

For more information, contact AIA Massachusetts Executive Director John Nunnari [jnunnari@architects.org](mailto:jnunnari@architects.org)

### WMAIA PROGRAMS WILL RESUME IN SEPTEMBER

INCLUDING OUR ARCHITECTURE THROUGH FILMS SERIES AND BCT LECTURES.

WE HOST THE AIA NEW ENGLAND CONFERENCE AND AWARDS CELEBRATION ON OCTOBER 5TH.