



Explore the Maps

Explore the UMass Amherst campus environment through interactive maps and tours. Scan the QR code or follow the link below to visit the Campus Planning Maps & Tours homepage to browse and view maps about campus sustainability, collections, history, and more.

umass.edu/cp/maps-tours

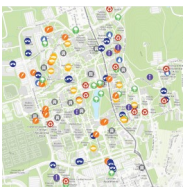


Green Building Self-Guided Walking Tour

An interactive GIS map that provides resources for a self-guided tour of campus green buildings. Select a building to view a description of each project and additional information, including a project website, photos, LEED scorecards, and links to related media coverage.

umass.edu/cp/green-buildings-self-guided-walking-tour

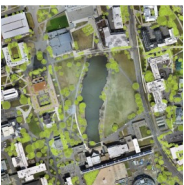
***Best for those looking for a self-guided tour at their own pace.*



Sustainability Explorer

An interactive GIS map that provides information on campus sustainability initiatives. Projects fall under eight categories: advocacy, building, energy, food, landscape, recycling, transportation, and water. View a description of each project and reveal additional information, including a project website, photos, and LEED scorecards.

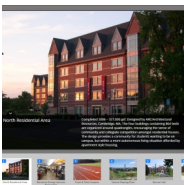
umass.edu/cp/green-campus-resources



Frank A. Waugh Arboretum Map/Database

Developed by the arboretum, this web application showcases the urban forest of the UMass campus to teach tree identification and appreciation.

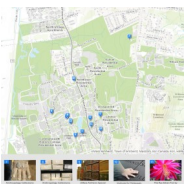
umass.edu/cp/green-campus-resources



A Decade of Renewal

From 2006-2016, many campus buildings were constructed or renovated, all with a focus on efficiency, sustainability, aesthetic value, and academic excellence.

umass.edu/cp/decade-renewal



Campus Collections Map

The Campus Collections Map transforms UMass Amherst into a virtual museum, showcasing its rich campus history and regional cultural heritage through a series of documents and artifacts.

umass.edu/cp/campus-collections-map

