

W M | A I A

N  
E  
W  
S  
L  
E  
T  
T  
E  
R



AUSTIN DESIGN  
ROBINS BARN LOFT  
CONWAY, NEW HAMPSHIRE

WINTER  
2020

## LETTER FROM OUR NEW WMAIA PRESIDENT

Welcome to 2020 and thank you for being part of WMAIA! I am excited to begin my two-year tenure as President of the Board. Having served on the board for about five years now, I would like to thank the previous presidents that I have served under: Chris Farley AIA, Helen Fantini AIA, and Ludmilla Pavlova-Gillham AIA. Their leadership, efforts, and volunteer hours, combined with the incredible work of our Executive Director, Lorin Starr, leave the chapter in a strong position.

We have a robust group of affiliate members and sponsors. Without their support, our chapter would not be able to offer nearly the number of programs and opportunities that it does. Thank you!

The Women in Architecture (WIA) Committee has been a great success. They have spearheaded some of our most successful and inspiring programs – and are gearing up for another event – likely towards the end of April. Stay tuned.

Our local COTE group (Committee On The Environment) is going strong and continuing to meet and offer informative short presentations - “green bites” – and an opportunity learn from each other. Working with Wright Builders, they are working on a program on Embodied Carbon – scheduled for this Spring.

WMAIA hosted a well-attended and well-received AIANE conference and awards ceremony at UMass – with tours to some of the other nearby colleges.

Our “Day of Service” has now run successfully for three consecutive years. We look forward to continuing this rewarding, inspiring, instructive, and enjoyable program.

WMAIA has successfully introduced ARE study materials into our public library system. Initial feedback indicates that these materials are being well-used. Further ideas of how to help aspiring architects successfully pursue licensure are always welcome!

We continue to have strong representation across the state and region. Chris Farley AIA is now a member of the Valley Development Corporation (VDC). Helen Fantini AIA is now President of AIANE – sharing strategies with other chapters throughout the region, spearheading regional efforts, and helping our voice reach AIA National. Ludmilla Pavlova-Gillham AIA is President of AIAMA – focused exclusively on state policy. And, Thomas RC Hartman AIA takes a seat on the AIA’s Strategic Council An impressive level of involvement from our past presidents!



KRISTIAN WHITSETT AIA

Personally, I would like to focus my efforts on increasing our visibility in the region. I think we have already done a good job of this – with our Day of Service, with events held at local galleries, and with our film series. But I am hopeful that we can find more opportunities to reach out beyond our membership and engage with others that are not familiar with the profession, or WMAIA. Bringing more visibility to our unique community of Western Massachusetts architects can serve our business interests - and more importantly - our profession as a whole. Community efforts - from volunteering on a local zoning board or at a local elementary school; to publicly celebrating the recent built work in Western Mass by our talented membership - will help strengthen our profession and WMAIA.

The Board welcomes your involvement in WMAIA. If you have any feedback, please let us know. Please do not hesitate to reach out to me directly with any questions or concerns.

I welcome your input and involvement!

Looking forward to 2020,

Kristian Whitsett AIA

## IN THIS ISSUE

**ONE** LETTER FROM WMAIA PRESIDENT KRISTIAN WHITSETT AIA

**TWO** COVER PROJECT: AUSTIN DESIGN INC

**THREE + FOUR** WMAIA ANNUAL DINNER 2019

**SEVEN TO TEN** ART BY ARCHITECTS

**TWELVE** THINGS TO DO + SEE IN WESTERN MASSACHUSETTS

**THIRTEEN + FOURTEEN** FEATURED ARTISAN: STONE COMFORT MASONRY

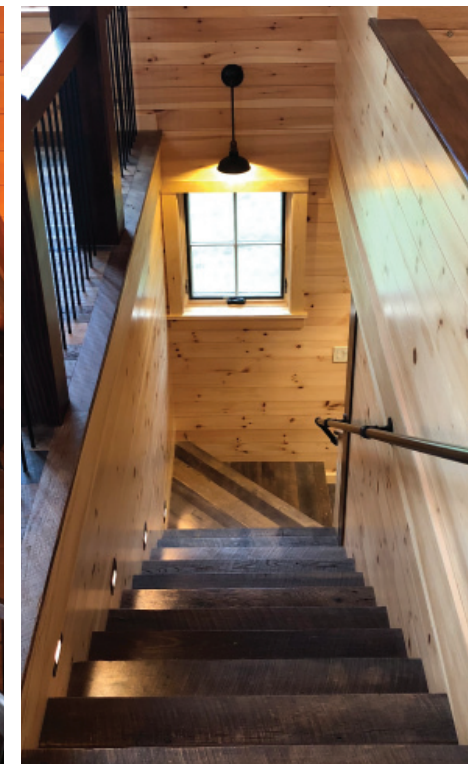
**FIFTEEN** WMAIA PROGRAMS

### THE WESTERN MASSACHUSETTS CHAPTER OF THE AMERICAN INSTITUTE OF ARCHITECTS

THE WMAIA NEWSLETTER IS PUBLISHED FOUR TIMES A YEAR. IT IS CIRCULATED TO ALL MEMBERS, ADVERTISERS AND SUBSCRIBERS. PLEASE DIRECT ALL NEWSLETTER CORRESPONDENCE TO RACHAEL CHASE, AT EDITOR@WMAIA.ORG. ARTICLES, PHOTOS, NOTICES OF EVENTS AND OTHER INFORMATION ARE WELCOME. OPINIONS EXPRESSED IN THE NEWSLETTER ARE NOT NECESSARILY THOSE OF THE WMAIA.

THE EDITOR RESERVES THE RIGHT TO REJECT OR REVISE MATERIAL AS SPACE AND SUBJECTIVE OPINION PERMIT.

### FROM THE COVER: AUSTIN DESIGN



COVER PHOTOS: KEVIN O'NEIL AIA

DID YOU SPOT THE DOG NAMED ABIGAIL IN THE COVER PHOTO?  
DO YOU HAVE A DOG WHO WOULD LIKE TO BE FEATURED ON OUR COVER?

EMAIL EDITOR@WMAIA.ORG

### WMAIA EXECUTIVE COMMITTEE

#### PRESIDENT:

KRISTIAN WHITSETT AIA

#### PRESIDENT ELECT:

GARTH SCHWELLENBACH AIA

#### TREASURER:

CHRISTOPHER NOVELLI AIA

#### SECRETARY:

CARYN BRAUSE AIA

#### PAST PRESIDENT:

LUDMILLA PAVLOVA AIA

#### MEMBERS:

JODY BARKER AIA

KERRY BARTINI AIA

HELEN FANTINI AIA

MOHAMED IBRAHIM AIA

GARRISON PIERS-GAMBLE ASSOCIATE AIA

MORGAN SAWYER AIAS

STEPHEN SCHREIBER FAIA

#### EXECUTIVE DIRECTOR:

LORIN STARR

#### NEWSLETTER EDITOR:

RACHAEL CHASE

#### EMERGING PROFESSIONALS

#### COORDINATOR

GARRISON PIERS-GAMBLE ASSOCIATE AIA

#### ARCHITECT LICENSING ADVISOR

KERRY BARTINI AIA

#### WEBSITE MANAGER

JULIE WAGGONER HON. WMAIA

#### SOCIAL MEDIA

MORGAN SAWYER AIAS

#### FILM SERIES

ANDREW BAGGE AIA

#### DISASTER ASSISTANCE COORDINATOR

JOHN ROBINSON AIA

#### COTE COMMITTEE CO-CHAIRS

LAURA FITCH AIA

AELAN TIERNEY AIA

# WMAIA ANNUAL DINNER 2019

## RED BARN AT HAMPSHIRE COLLEGE

Almost 70 people attended WMAIA's December 4, 2019 Annual Meeting -- a festive gathering at Hampshire College's Red Barn. Thanks to our evening's sponsors Pella and Keiter Builders! Here are some of the highlights of the evening:

### Board Changes

The membership thanked Ludmilla Pavlova-Gillham AIA for her two years of service at the chapter's president and welcomed Kristian Whitsett AIA to the position. In addition, we thanked outgoing board member Jason Newman AIA for his many years of service to the chapter and for his work in fostering the development of our Emerging Professionals Group. Mohamed Ibrahim AIA will be joining the board in 2020.

### Recognizing Newly Licensed Architects

We began an annual tradition of recognizing the newly licensed architects in our region...they are: Henry Albin AIA, Andrew Bagge AIA, Aviva Galaski AIA, James Jarzynecki, W. Scott Laidlaw and Patricia O'Flaherty AIA.



### Scholarships

This year, in conjunction with AIA National and with the support of Pella, we were able to offer two \$1000 scholarship to M.Arch students at UMass. Submission were screened by the UMass faculty and then submitted to the WMAIA board of review. Judging criteria was design excellence, clarity of presentation, and community and/or university engagement by the applicant. This year's winners were Samuel Hill and Yash Mehta. The projects they submitted are pictured above.

### Kent Hicks, Keynote Speaker

The evening concluded with an inspiring talk by Kent Hicks Affiliate WMAIA (Kent Hicks Construction). Determined to do more about climate change, Kent has been looking for opportunities to go beyond his own work in highly energy efficient building. After reading Paul Hawken's book "Drawdown," in which 200 of the world's leading scientists and researchers identified, measured, and modeled 100 substantive solutions -- in order of impact -- to reduce emissions or sequester carbon from the atmosphere. Kent was impressed that #6 on the list was the education of girls and women globally (construction methods were #79 and 80). Thus began Kent's involvement with IIRR (International Institution of Rural Reconstruction), and work in East Africa and locally in inner cities, focusing on climate equity through education and the built environment. This is a complicated project that also involves engaging with students in the BCT program at UMass and forging relationships with educational institutions in Ethiopia. The project is ongoing so expect to hear more about Kent's work over the coming months and years.



# WMAIA ANNUAL DINNER 2019

## RED BARN AT HAMPSHIRE COLLEGE

### Green Giants – Celebrating the Contributions of Those Who Build, Teach About, Envision and Fund Green Buildings

The Green Giants Award Program was created in 2013 as a biennial awards program by Laura Fitch AIA, Lawson Wulsin AIA, and Aelan Tierney AIA of the West Branch USGBC Massachusetts to honor the work of trades people, educators, and owners/program directors who help build, teach about, envision and fund the green buildings in Hampshire, Hampden, Franklin, and Berkshire counties. The Western Massachusetts AIA COTE Committee is continuing this award program.



# GREEN GIANTS



WESTERN MASSACHUSETTS AIA COMMITTEE ON THE ENVIRONMENT

WMAIA COTE



### EDUCATION CATEGORY

Kate Cholakis, Conway School of Landscape Design, Northampton, MA

The mission of the Conway School is to explore, develop, practice, and teach design of the land that is ecologically and socially sustainable.

For example, over the course of the past ten years the school has worked on several food system projects, in response to increasing global concerns about access to food and the impact of industrial agriculture on the land.

Graduates of the Conway School enter other professions or strike out on their own. The fruit of their efforts can be seen internationally.

The Conway School of Landscape Design founded in 1972 offers a ten-month graduate program in sustainable landscape planning and design culminating in the Master of Science in Ecological Design degree.



### TRADES CATEGORY

Gary Hartwell, Project Manager, Smith College Facilities Management

For over 25 years, "Green Gary Hartwell" has always employed excellent sustainable practices. He has organized and supervised multiple building envelope upgrades.

Long before it was vogue and trendy, Gary was insulating roof lines, attic space, basements and crawl spaces, oftentimes improving access to these remote locations

Mr. Hartwell has stayed true to the green building cause and has inspired all of us in the Facilities group to be truly committed to sustainability. In my 45 year career in "Building Sciences" I have never meet anyone more dedicated to the cause.



### OWNER CATEGORY

Rochelle Prunty, General Manager, River Valley Cooperative

Rochelle Prunty is a green giant of the highest order, caring for the community, her own teams, and her planet's abundant, but imperiled local food supplies.

Food security paired with farmland preservation, living wages, over 100 new jobs, and a benchmark sustainable facility, make her eminently worthy for this recognition.

The Coop's mission is to support healthy sustainable communities, and so the building is designed and conjured to provide a pleasant shopping experience, while showcasing an expanded array of over 400 farms, and food producers that they purchase from.

The COOP is walking the talk, demonstrating that sustainable development is good for the community economically, socially and environmentally.

Thanks to our Green Giant jury from AIA New Hampshire's COTE Committee: Sheldon Pennoyer AIA LEED AP, Sheldon Pennoyer Architects, David Ely AIA LEED AP, Windy Hill Associates, Tracy Kozak AIA LEED AP, JSA Architects, John Hession, Honorary AIA, NH Film Producer for the NE COTE Summits

BEFORE + AFTER  
NAOMI DARLING ARCHITECTURE



BEFORE + AFTER  
NAOMI DARLING ARCHITECTURE



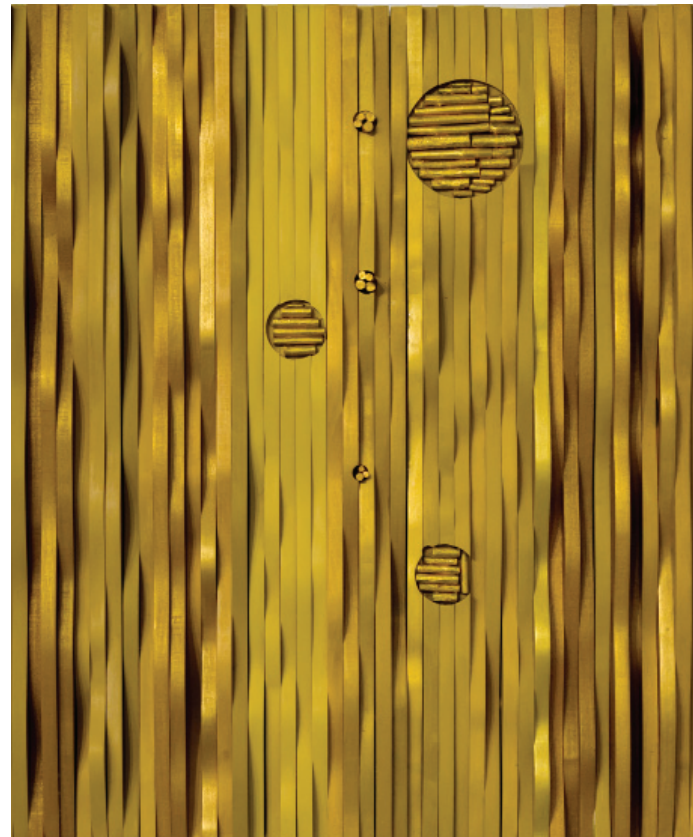
The Takahashi Harb Loft and Library is an interior renovation and conversion of an existing ground floor walk-out basement and two-car garage into one-bedroom loft-style apartment and library workspace. The biggest challenge was to bring in light and open the spaces to the exterior so that the spaces would not feel like a basement. The design strategically located large windows and divided the existing eleven-foot high ceiling into three registers to accentuate the feeling of spaciousness. To maintain the tight budget, we worked with almost all of the existing conditions which helped to organize the living space into three simple sections while maintaining the library as a separate space within the former garage.

# ART BY ARCHITECTS

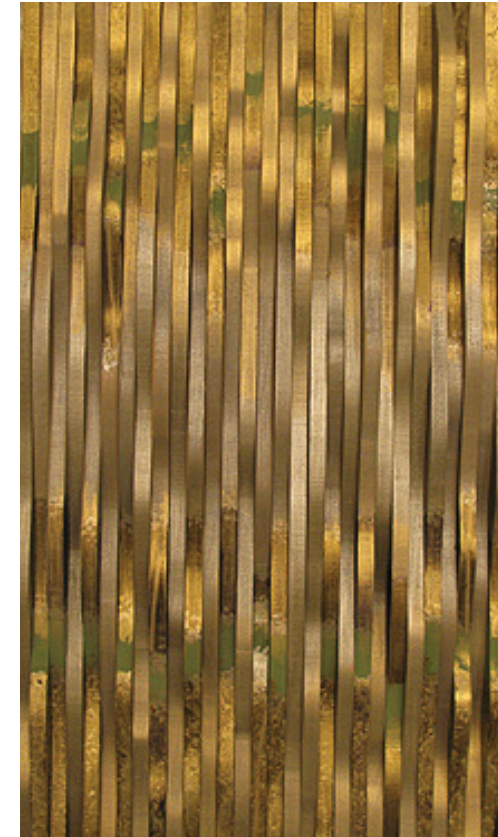


**Sigrid Miller Pollin FAIA**

“My art work ricochets between the built and the natural environments. It riffs on patterns, repetitions and visual moments found in the landscape. It often shuffles these with fantasy images of bird and plant life.”



# ART BY ARCHITECTS



## PROFESSIONAL CONSTRUCTION SERVICES

- New Construction
- Remodeling
- Additions

Florence, MA • 413-586-8600  
KeiterBuilders.com



New Home, Leeds, MA

## STYLE

SEE LIFE IN A WHOLE NEW LIGHT WHEN CRAFTSMANSHIP MEETS BEAUTY.



LET'S EXPLORE SOLUTIONS FOR YOUR NEXT WINDOW AND DOOR PROJECT.

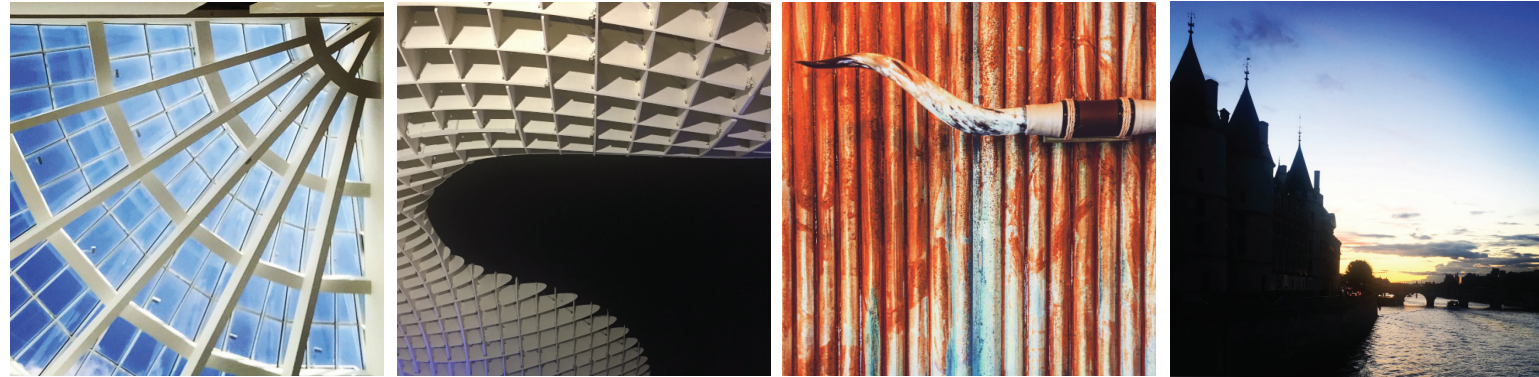
Jason Chizmar at 802.760.7925 or jchizmar@awhastings.com



ARE YOU AN ARCHITECT WHO MAKES ART?  
EMAIL EDITOR@WMAIA.ORG



# ART BY ARCHITECTS

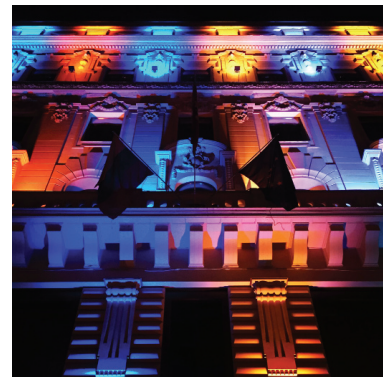


**John Kuhn AIA:**  
 "I was introduced to Instagram by my kids in 2013. I liked it for two reasons: it combined my love of photography with a semi-public platform for sharing. I also loved the square format. I tend to focus on patterns, contrasts, shades and shadows, details and color. For this contribution to the WMAIA newsletter, I selected some of my more architectural images."

Atlanta  
 Instagram: @jwoodkuhn



Seville  
 Rome

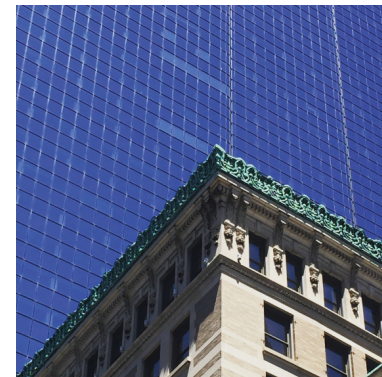


Charlottesville  
 Budapest



Paris  
 NYC

# ART BY ARCHITECTS



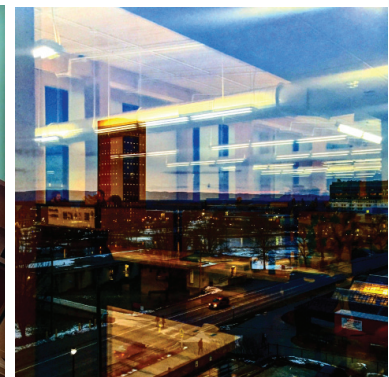
Charleston  
 Boston



Berlin  
 Chartres



New Haven  
 Boston



North Adams  
 UMass

Sustainability Leadership for Over Forty-Five Years

Kuhn Riddle Architects

**WRIGHT** Inc.  
 BUILDERS



Bruce Coldham Architect

Low Embodied Carbon,  
 Net Zero and  
 Sustainable Construction

413.586.8287  
 wright-builders.com  
 Northampton, MA

You want a collaborative M/E/P partner.

**We understand.**

Since 1992, we've worked closely with the architectural community to ensure buildings perform the way they were envisioned.

We know your challenges and understand your needs.

We're proud to support AIA.

We're proud to support you.



(413) 743-9500 ♦ hec@hesnor.com ♦ www.hesnor.com

The Coach House | Northampton, MA | Built in 1900

Historical Renovation | Completed in 2019

Design by Juster Pope Frazier Architects  
 Photo by CHODOS, Inc.



*Building History Since 1897*

www.dasullivan.com | 413-584-0310

Follow us online:

## THINGS TO DO + SEE IN WESTERN MASSACHUSETTS

### MASS MoCA GAMALIEL RODRÍGUEZ LA TRAVESÍA / LE VOYAGE

Rodríguez's large-scale works on paper imagine landscapes inspired by the two-fold character of his native Puerto Rico, which the artist recently described as a mix of "beauty and chaos." Using felt, acrylic, colored pencil, and ballpoint pen, Rodríguez skillfully renders his hyper-realistic landscapes in rich blues and purples that are simultaneously seductive and unsettling.



planning  
land surveying  
civil engineering  
optical alignment  
project management  
electrical engineering  
structural engineering  
mechanical engineering



50 Depot Street • Dalton, MA 01226  
(413) 684-0925 • Fax (413) 684-0267  
e-mail hill@hillengineers.com



**Providing Expert Environmental Services In  
Western Massachusetts For Over 25 Years!**

- Hazardous Building Materials
- Asbestos, Lead Paint, PCBs
- Indoor Air Quality Programs
- Industrial Hygiene Services
- LSP Services
- Due Diligence Services
- Soil & Groundwater Remediation
- Management Planning & Compliance
- Emergency Spill Response
- AHERA Compliance Services



See the following Contract User Guide:  
PRF67/Designated D CAMM  
Environmental Engineering,  
Diagnostics, and Testing

Office Location: Pittsfield, MA Email: scott@ecogenesis.com

413-445-7756 • www.ecogenesis.com

## THINGS TO DO + SEE IN WESTERN MASSACHUSETTS

### SMITH COLLEGE MUSEUM of ART

Black Refractions: Highlights  
from The Studio Museum in Harlem

January 17–April 12, 2020

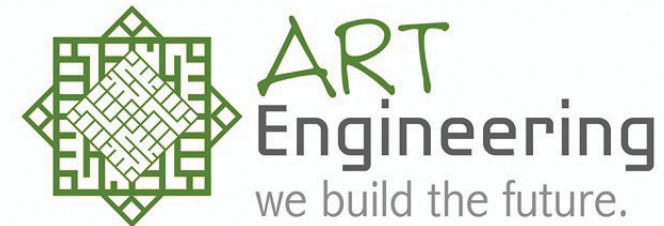
Comprised of nearly 100 works  
in many media, Black Refractions:  
Highlights from The Studio Museum  
in Harlem surveys close to a century  
of creative achievement by artists of  
African descent.



### mica blue CREATIVE

Julie Waggoner  
Affiliate W/MAIA  
jwaggoner@micablue.com  
413-665-2280

Graphic Design  
Web Design  
Copy Writing  
Photography



38 Front Street FL 3 Worcester, MA 01608

t. 508-797-0333 f. 508-797-5130



1208 Cromwell Ave. Rocky Hill, CT 06067  
860-721-1171



Supporting  
the  
Architectural  
Community

Dennis O'Rourke

413-772-9096

dorourke@pellasales.com



MOSELEY SCHOOL WESTFIELD MA

STUDIO ONE

VIEWED TO BE THE BEST.®



## 3D DOCUMENTATION FOR ARCHITECTURE

Full Service Technical Imaging and 3D/VR immersive scanning for Architects and Designers. Streamline the way you document existing conditions, as built, and finished spaces. Create extraordinary marketing assets.

3D  
3d Scanning  
of Existing  
Conditions and  
As-Built



Aerial Drone  
Photography  
and Video



Interactive  
Content for  
Design and Sales

Serving NY, MA, NH, VT, CT

Contact us 413-464-1961

northeast-3d.com

Christa McAuliffe Library

**FEATURED ARTISAN:  
STONE COMFORT - PLAINVILLE, MASSACHUSETTS**



**How do you work on your craft within the Western Massachusetts community?**

In my 40 years as a mason, I have built many masonry heaters and bakeovens from North Adams to Great Barrington.

**How does sustainability play a role in your business?**

Wood being a renewable but precious resource, it makes sense to utilize it in the most efficient manner possible. Masonry heaters deliver up to 30 hours of gentle radiant heat from just a three hour burn. I heat my own home with just two cords of dry wood for the winter.

**Is there a way in which you would like to work with local architects and designers that hasn't happened yet?**

I work with some architects who design a masonry heater in every home. I would like to educate others to the old designs that have been in homes in Europe for centuries, such as five channel round tile heaters from Sweden, soapstone heaters from Finland, simple single skin brick heaters from Russia, and beautiful tile heaters from Germany and Austria. Wood was not always plentiful in these counties, so it was necessary to burn it wisely.

**What's your favorite part of your creative process? Can you describe your process?**

I love working with the homeowner and architects to find the best solution for their heating needs. Heaters need to be centrally located to provide heat in all directions. I become involved early in the design process in order to design the best location, style of heater, foundation and chimney. I especially enjoy designing custom features such as heated benches, adding bakeovens and wood niches.

I then direct the construction process of foundation and chimney early on, and install the heater before the flooring is installed. The first lighting of the heater with the homeowner present is the first step towards many years of making this heater the heart of the home.



**FEATURED ARTISAN:  
STONE COMFORT - PLAINVILLE, MASSACHUSETTS**



We also install pre-made Tulikivi units: Tulikivi is a manufacturer of carefully crafted soapstone fireplaces "kits" in which modern technology meets ancient inventions. Soapstone is a unique material. Its heat retention capacity properties and optimal weight guarantees its excellent efficiency, heating capacity and heat transfer time.





# AIA Western Massachusetts newsletter

71 SOUTH MAIN STREET SUNDERLAND MASSACHUSETTS 01375

Prsrtd Std  
US Postage  
PAID  
Permit 183  
Greenfield MA



## WMAIA PROGRAMS WINTER 2020

**WMAIA PROGRAMS WILL RESUME IN FEBRUARY – LOOK FOR UPDATES IN OUR REGULAR ENEWS.**

(IF YOU ARE NOT RECEIVING OUR ENEWS, WHICH CONTAINS ALL OF OUR PROGRAM INFORMATION,  
PLEASE CONTACT LORIN STARR AT [DIRECTOR@WMAIA.ORG](mailto:DIRECTOR@WMAIA.ORG) TO MAKE SURE WE HAVE YOUR CURRENT EMAIL ADDRESS).

**Thanks to WMAIA's 2019-2020 Sponsors and Corporate Affiliate Members!**

### COPPER SPONSORS



### NICKEL SPONSORS



### BRONZE SPONSORS



### CORPORATE AFFILIATE MEMBERS, PROGRAM SPONSORS & ADVERTISERS:

Berkshire Design Group Inc. • Dodson & Flinker Inc • Eco-Genesis Corp. • Engineering Design Associates • Engineering Ventures  
Hill Engineers, Architects & Planners • Lexington Group Inc. • LP Adams Co. Inc.  
MicaBlue Creative • MJ Moran. • NL Construction • National Vinyl LLC • Olander Brick • Poole Professionals  
Porter & Chester Institute.. • Renaissance Builders. • Ryan Hellwig PE • Sierra Pacific