



LOVERS LANE ADDITION
WASHINGTON MASSACHUSETTS
BERKSHIRE DESIGN, INC.

AIA NATIONAL 2024

KERRY BARTINI AIA
PRESIDENT WMAIA

AIA24 in Washington DC was a hit! What's not to enjoy about a great city, great people, inspiring keynotes, fascinating tours, and a chance to catch up with your peers and industry trends? There was something for everyone, whether you wanted to squeeze in some continuing education, see the class of 2024 Fellows Induction and awards ceremonies, or walk the Expo floor (there were puppies!). If one didn't know better, the Walter E Washington Convention Center could be mistaken as the AIA Convention Center as it was truly a fantastic takeover. AIA Staff and local security were super helpful, incredibly kind, and well prepared. Wayfinding was made even simpler by the AIA24 app that included maps. The AIA Stores were fun to drop into for gifts to take back to the office. While the Annual Business Meeting got off to an interesting start as AIA National attempted to address the general membership's lack of confidence in current leadership, overall, AIA24 was well done.

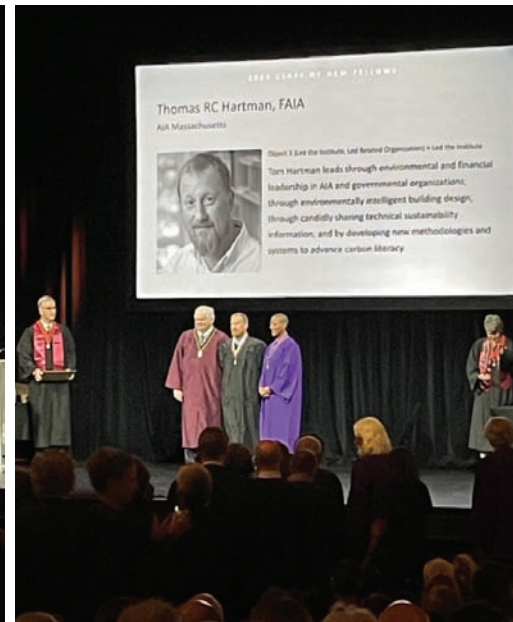
Mark your calendars for next year in Boston! Did I mention there will be a puppy park?



Back for a second year was the Puppy Park, part of the many lounge areas where attendees could take a break. There was quite a line to cuddle with about half a dozen eight-week-old puppies.

"DC Central Kitchen's mission is to use food as a tool to strengthen bodies, empower minds, and builds communities."

Over 12,000 attendees assembled for the opening keynote speech.



WMAIA's own Thomas RC Hartman FAIA & Ludmilla Pavlova Gillham FAIA became Fellows during a ceremony at the Warner Theater.



Quinn Evans took home the AIA24 Firm Award. It was moving to see the dozens of employees in attendance stand up and cheer for the leadership on stage.

IN THIS ISSUE:

- ONE AIA NATIONAL 2024
- TWO COVER STORY: BERKSHIRE DESIGN, INC
- THREE TO SEVEN UMASS THESIS WORK 2024
- EIGHT MASS MOCA BUILDING 6 WINS AIA COTE TOP TEN AWARD
- ELEVEN SUMMER 2024 NCARB UPDATE
- TWELVE STEPHEN SCHREIBER FAIA WINS NCARB AWARD
- FOURTEEN CITIZEN ARCHITECT
- FIFTEEN WMAIA PROGRAMS: FALL PREVIEW 2024

THE WESTERN MASSACHUSETTS CHAPTER OF THE AMERICAN INSTITUTE OF ARCHITECTS

THE WMAIA NEWSLETTER IS PUBLISHED FOUR TIMES A YEAR. IT IS CIRCULATED TO ALL MEMBERS, ADVERTISERS AND SUBSCRIBERS. PLEASE DIRECT ALL NEWSLETTER CORRESPONDENCE TO RACHAEL CHASE, AT EDITOR@WMAIA.ORG. ARTICLES, PHOTOS, NOTICES OF EVENTS AND OTHER INFORMATION ARE WELCOME. OPINIONS EXPRESSED IN THE NEWSLETTER ARE NOT NECESSARILY THOSE OF THE WMAIA. THE EDITOR RESERVES THE RIGHT TO REJECT OR REVISE MATERIAL AS SPACE AND SUBJECTIVE OPINION PERMIT.

COVER PHOTOS: GAVIN PREUSS

COVER STORY BERKSHIRE DESIGN, INC.



Addition to a private residence in Washington Massachusetts, completed in 2024.

WMAIA EXECUTIVE COMMITTEE

- PRESIDENT:
KERRY BARTINI AIA
- PRESIDENT ELECT:
GARRISON PIERS-GAMBLE
ASSOCIATE AIA
- TREASURER:
JODY BARKER AIA
- SECRETARY:
CARYN BRAUSE FAIA
- PAST PRESIDENT:
GARTH SCHWELLENBACH AIA

- MEMBERS:
LEAHNA AGUSTIN AIAS
WENDY BROWN AIA
HELEN FANTINI AIA
MOHAMED IBRAHIM AIA
MY-RON HATCHETT AIA
STEPHEN SCHREIBER FAIA
KRISTIAN WHITSETT AIA

- EXECUTIVE DIRECTOR:
LORIN STARR
- NEWSLETTER EDITOR:
RACHAEL CHASE
- EMERGING PROFESSIONALS
COORDINATOR
GARRISON PIERS-GAMBLE
ASSOCIATE AIA

- ARCHITECT LICENSING ADVISOR
KERRY BARTINI AIA
- WEBSITE MANAGER
JULIE WAGGONER HON. WMAIA

- SOCIAL MEDIA
LEAHNA AGUSTIN AIAS
- FILM SERIES
ANDREW BAGGE AIA

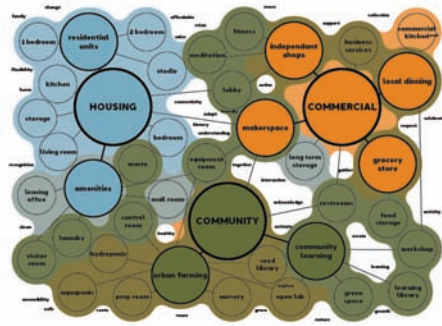
- DISASTER ASSISTANCE COORDINATOR
LUDMILLA PAVLOVA-GILLHAM FAIA
- COTE COMMITTEE CHAIR
JILLIAN DECOURSEY AIA

CONGRATULATIONS UMASS M.ARCH STUDENTS!

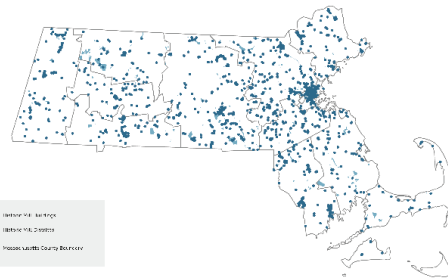
Department of Architecture
at the University of Massachusetts Amherst

Every year, we feature student work in the Summer Issue of the WMAIA Newsletter as a celebration of the architectural education happening in Western Massachusetts. This year, seventeen MArch students graduated in the class of 2024, with thesis presentations that ranged in scale and focus, from adaptive reuse of mill buildings to international borders. A selection of projects are featured on the following pages.

LEAHNA AGUSTIN



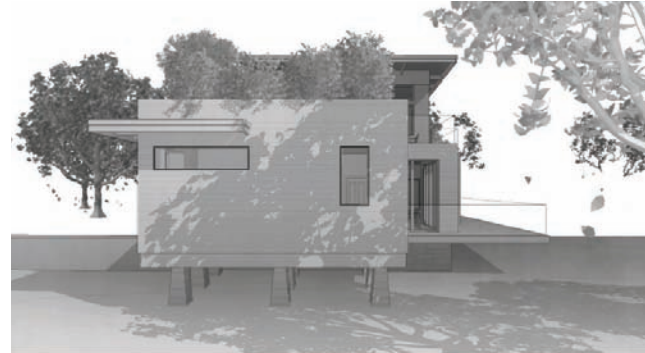
Historic Mill Buildings and Historic Mill Districts in Massachusetts



ADAPTIVE DESIGN STRATEGIES: AFFORDABLE HOUSING IN NEW ENGLAND'S HISTORIC MILL DISTRICTS

Thesis Advisor: Steve Schreiber FAIA

ZANDER AUERBACH



EMBODIED CARBON: THE HIDDEN ENVIRONMENTAL COSTS OF THE MODERN "GREEN" BUILDING

Thesis Advisor: Rob Williams AIA

JACQUILINE BERLIN



ETHICAL MEMORIALIZATION: A DESIGN PROPOSAL FOR A GENOCIDE MEMORIAL ON UMASS' CAMPUS

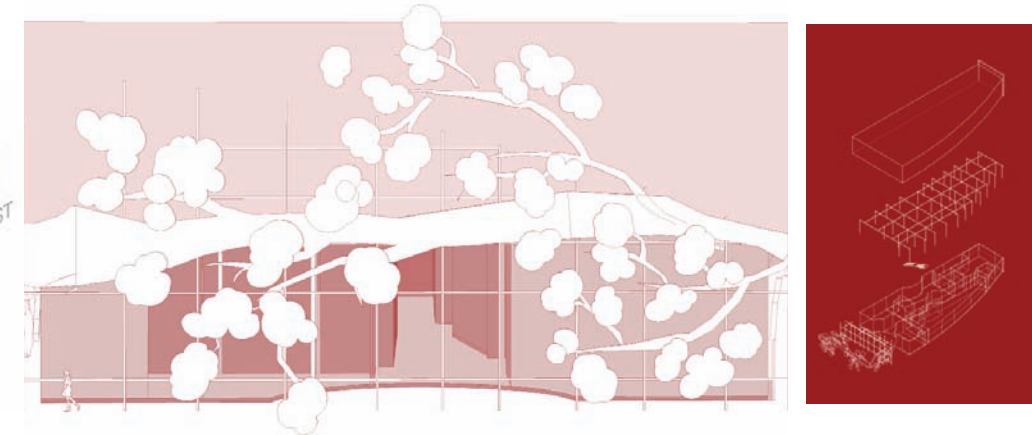
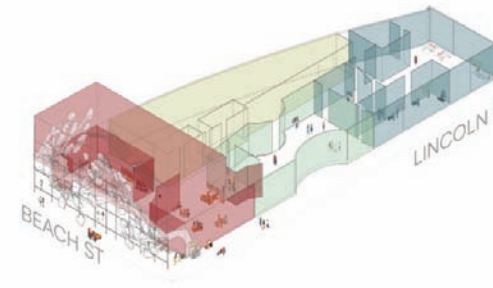
Thesis Advisor: Sandy Litchfield Assoc. AIA

CONGRATULATIONS UMASS M.ARCH STUDENTS!

Department of Architecture
at the University of Massachusetts Amherst

Many WMAIA members attended thesis reviews throughout the year. We want to acknowledge the students, the thesis advisors and faculty, as well as the many community members who serve as outside jurors during the Spring semester - thank you!

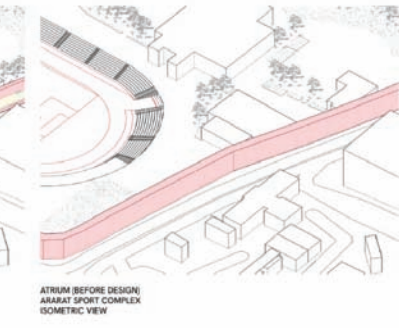
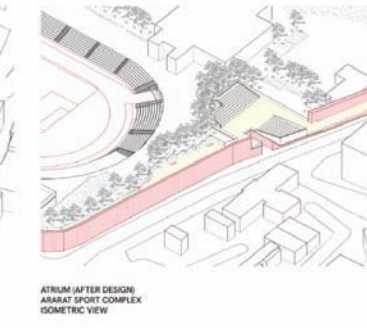
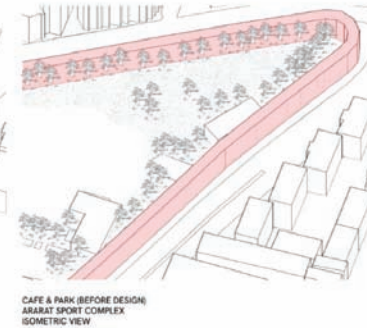
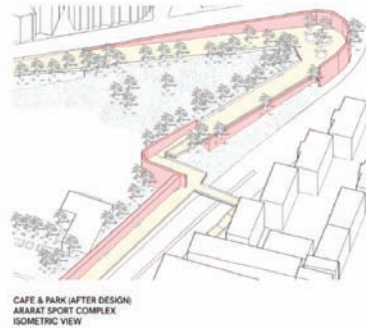
PALMER BERRY



IDENTIFYING CULTURAL AND SPATIAL INTERSECTIONS: THE EXPERIENCE OF THE IN-BETWEEN

Thesis Advisor: Ann Marshall AIA

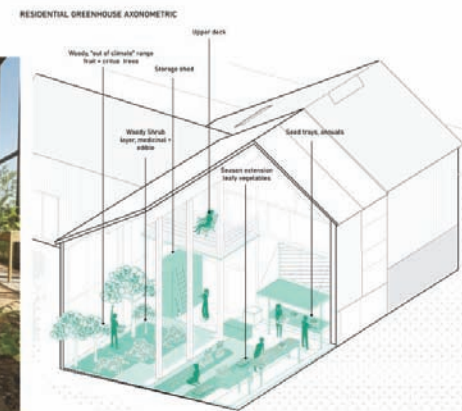
ANITA GHORBANI



INVISIBLE IN BORDERS: BURSTING AN ARMENIAN BUBBLE IN TEHRAN

Thesis Advisor: Pari Riahi AIA

VICTORIA GITTO



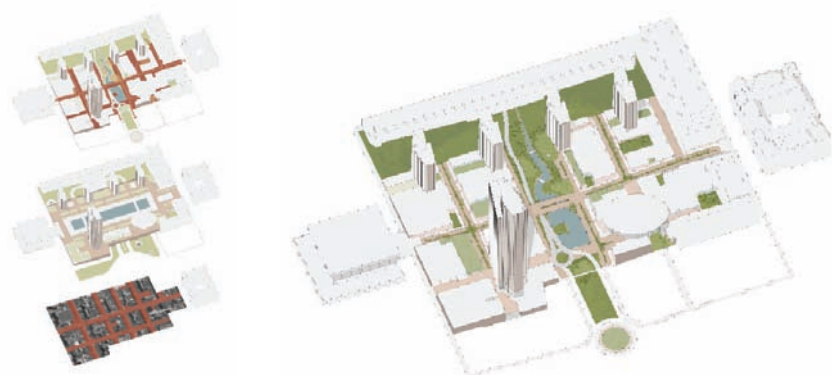
PRESERVING FARM CONNECTIONS

Thesis Advisor: Sandy Litchfield Assoc. AIA

CONGRATULATIONS UMASS M.ARCH STUDENTS!

Department of Architecture
at the University of Massachusetts Amherst

LAUREN GONSALVES



AFTER RENEWAL: AN APPROACH TO ARCHITECTURAL RECLAMATION

Thesis Advisor: Erika Zekos Assoc. AIA

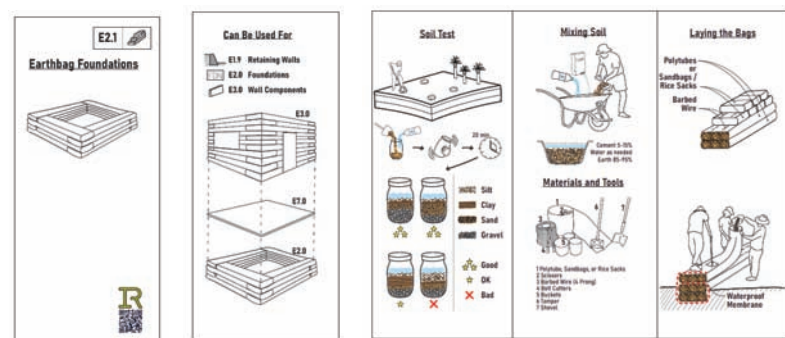
KAYLEIGH JACKMAN



REDEFINING 21ST CENTURY SCHOOLS: EXPLORING INNOVATIVE DESIGN SOLUTIONS FOR POST-WAR ERA

Thesis Advisor: Rob Williams AIA

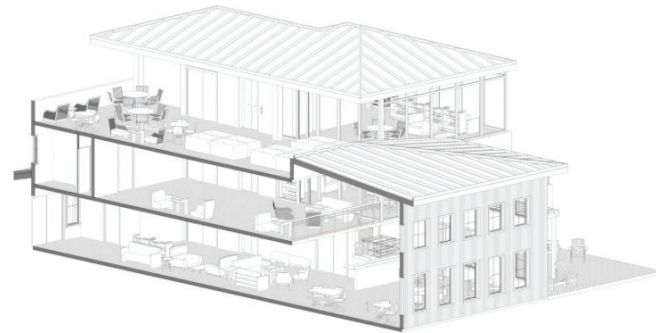
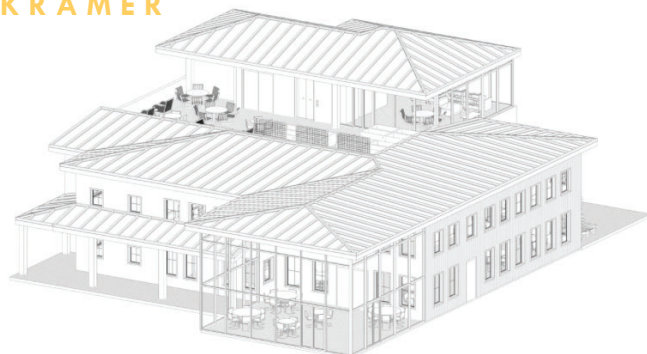
JAMIE JANG



INFORMAL REGENERATION

Thesis Advisor: Sandy Litchfield Assoc. AIA

SOPHIE KRAMER



EXAMINING ECOVILLAGES: THE DESIGN AND IMPLEMENTATION OF EQUITABLE AND ACCESSIBLE SUSTAINABLE

Thesis Advisor: Carey Clouse AIA

CONGRATULATIONS UMASS M.ARCH STUDENTS!

Department of Architecture
at the University of Massachusetts Amherst

MIKAL MALKOVICH



RE-IMAGINING LOW DENSITY RESIDENTIAL LANDSCAPES

Thesis Advisor: Ray K. Mann AIA

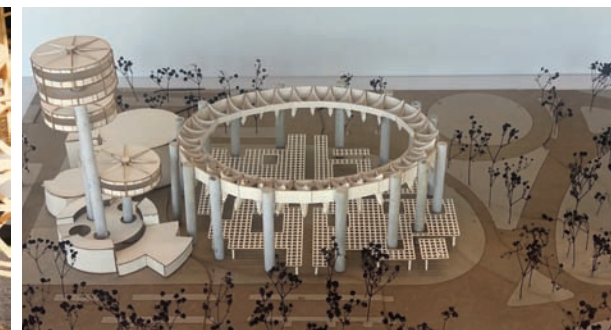
OLIVIA McCAFFERTY



THE EVOLUTION OF SENIOR LIVING DESIGN: STORYTELLING IN SPACE

Thesis Advisor: Erika Zekos Assoc. AIA

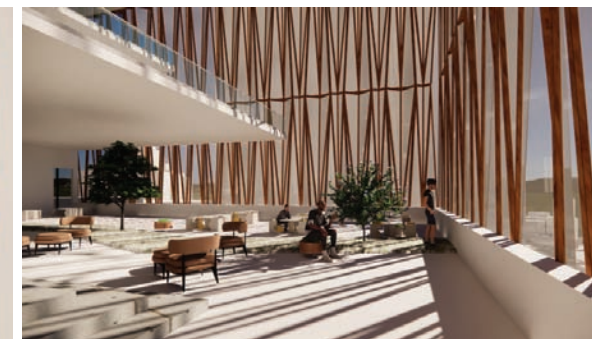
ALEXANDER McNALLY



PAVILION PARK: SUSTAINABILITY IN TEMPORARY DESIGN

Thesis Advisor: Erika Zekos Assoc. AIA

ASHIK MUBARACK



URBAN PRISON LINK: A NEW URBAN PRISON TYPOLOGY

Thesis Advisor: Jordan Kantor Assoc. AIA

INTERESTED IN SHARING A CONVERSATION YOU'VE BEEN HAVING?
EMAIL EDITOR@WMAIA.ORG

CONGRATULATIONS UMASS M.ARCH STUDENTS!

Department of Architecture
at the University of Massachusetts Amherst

COLLEEN TULLY



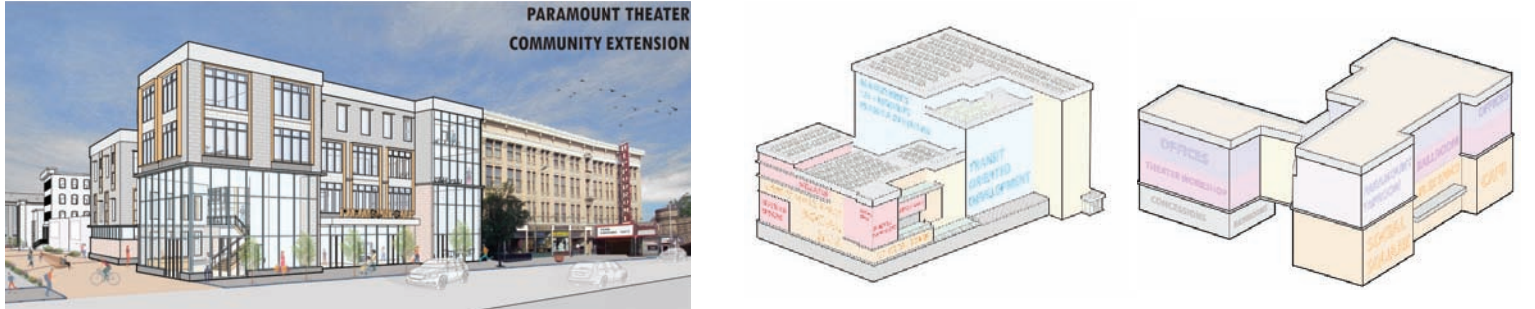
HOME AS THE NEXUS OF CARE: REIMAGINING COGENERATIONAL COMMUNITIES FOR AGING IN PLACE Thesis Advisor: Ray K. Mann AIA

EMMITT VARITIMOS



ADDRESSING CONTEMPORARY HOUSING CHALLENGES WITH 3D PRINTING Thesis Advisor: Rob Williams AIA

TYLER YOUNG



REGENERATING THE URBAN VOID: DESIGN STRATEGIES FOR SUSTAINABLE & INCLUSIVE COMMUNITIES Thesis Advisor: Caryn Brause FAIA

MASS MoCA THINGS TO DO + SEE IN WESTERN MASSACHUSETTS



BARBARA ERNST PREY BUILDING 6 PORTRAIT: INTERIOR

Prey's commission sets a new benchmark for the size and scale of watercolor works on paper, among the most unforgiving combination of any painterly media. Her piece tackles the vast horizontal spread of the Wilson Building's second floor, which comprises a full acre of floor area, with some 400 columns, hundreds of windows, and layers and layers of paint. "This commission is a painter's dream, an engaging subject combined with a breathtaking scale for this media," says Prey. "I have long admired MASS MoCA's commitment to breaking boundaries in commissioning and presenting new works, and am thrilled to have been asked to create a piece that celebrates the organization's ongoing growth and success. The architecture, the light, the colors, and the different textures of the space in the building are all compelling subjects, and this piece has pushed my boundaries as an artist, opening up new perspectives on watercolor painting."

WESTERN MASS IS HOME TO ANOTHER AIA COTE TOP TEN AWARD WINNING PROJECT



The AIA Framework for Design Excellence represents the defining principles of design excellence in the 21st century. Comprised of 10 principles and accompanied by searching questions, the framework informs progress toward a zero-carbon, healthy, just, resilient, and equitable built environment. This year's COTE Jury members were Nadine Saint-Louis AIA, Chair, McHarry Associates, Miami FL; Yu-Ngok Lo FAIA, YNL Architects, Culver City CA; Jack Rusk Assoc. AIA, EHDD, San Francisco CA; Eddy Santosa AIA, Mott MacDonald, Los Angeles CA.

Mass MoCA (Massachusetts Museum of Contemporary Art) is among the largest contemporary art museums in the United States and a pioneering adaptive reuse project. The 17-acre, 28-building, 19th century mill complex, once the home of Sprague Electric and Arnold Print Works, has been preserved and transformed over three phases. The architecture of the museum builds on historically important buildings to challenge basic assumptions about architecture and the display of art. MASS MoCA blurs the line between the visual and performing arts and between the finished object and its creation.

This project, the third phase of the Bruner/Cott's work at the Massachusetts Museum of Contemporary Art, bolsters the museum's world-class reputation while also revitalizing a small New England mill town. The adaptive reuse of Building 6 and a smaller adjacent building has added more than 130,000 square feet of previously undeveloped space to the museum's sprawling campus for contemporary art, multimedia exhibitions and accompanying events, workshops, and storage.



The project team remediated major contaminants on the site, once a brownfield, promoting the continued healing of the surrounding landscape and adjacent Hoosic River.

The building's transformation also leverages the museum's location on a peninsula to offer panoramic views of the river and the Berkshire mountains beyond. At this art museum, connections to the outdoors become an important part of the visitor experience.

See opposite page for a painting of the original building interior.

DO YOU HAVE NEWS
TO SHARE WITH THE WMAIA COMMUNITY?
EMAIL EDITOR@WMAIA.ORG

Photos: Michael Moran



WB WESTERN BUILDERS
GRANBY, MA est. 1975

BUSINESS SERVICES

- Preconstruction
- General Contracting
- Construction Management

413-467-9171 x3071
73 Pleasant St. Granby MA
www.westernbuilders.com

Hill-Engineers, Architects, Planners, Inc.

Hillengineers.com
413.684.0925 - 50 Depot St. Dalton, MA. 01226

A WHOLE NEW APPROACH TO ENGINEERING DESIGN

LN Consulting provides building design solutions focused on health and sustainability, forged in analysis and technology, in collaboration with our clients and the communities they serve. Our consulting firm delivers intelligent, forward-thinking solutions that address building resiliency, energy optimization, and occupants' safety.

(413) 776-9580
Northampton, MA
(802) 655-1753
Burlington, Vermont
LNconsulting.com

WRIGHT BUILDERS INC.

413.586.8287

WRIGHT-BUILDERS.COM

48 BATES STREET
NORTHAMPTON, MA 01060

CELEBRATING 50 YEARS AS WESTERN NEW ENGLAND'S LEADER IN SUSTAINABLE AND HIGH-PERFORMANCE RESIDENTIAL, COMMERCIAL & INSTITUTIONAL CONSTRUCTION

COMMERCIAL & RESIDENTIAL WINDOW SOLUTIONS

- Initial project and product application consultation
- Assistance with Green Building requirements and LEED® Certification
- Custom product and installation design
- 2-D (CAD) details and 3-D (BIM) models for Pella® Products
- Professional installation and shop drawings
- "Mobile Showroom" samples/demos available
- Pella + Purpose CEU program

Mary Lynn Hadix
Architectural Representative
Pella Products, Inc.
mhadix@pellasales.com
413.824.2422

SUPPORTING ARCHITECTS OF WESTERN MASSACHUSETTS

Build your legacy with Keiter

Our passion is to help our clients build the integral foundations of their legacy.

▶ LEARN MORE AT KEITER.COM

SUMMER 2024 NCARB UPDATE

KERRY BARTINI AIA

NCARB continues to find ways to remove barriers and obstacles to the licensure process, as well as the pipeline to leadership on state boards and NCARB's Board of Directors. Several developments are underway to support that mission.

NCARB has been working with the two remaining jurisdictions that have not eliminated the ARE rolling clock, a move to provide more equitable access to the exam. This can mean legislative action in some cases.

Correspondingly, Jon Baker FAIA's commitment during his presidency to multiple paths to licensure sparked optimism and a re-evaluation of the ways in which we can maintain the rigor required for practice, yet provide additional pathways to licensure. Ken VanTine AIA will take the reins from Jon at the Annual Business Meeting in June and will continue this work; while Coffee Polk AIA and Kevin Singh AIA are joining the board as the first ever At-Large Directors

In testing news, NCARB recently updated the ARE guidelines to include testing provider PSI's recent security measures. Candidates at testing centers will now be scanned with a metal detector wand.

A reminder to all candidates that they are obligated to uphold confidentiality of the exam. Violations are taken very seriously, and disciplinary actions involving public reprimand are maintained in NCARB's public database:

<https://www.ncarb.org/get-licensed/ethics/disciplinary-actions>

Starting August 1st, NCARB fees will be increasing. NCARB will still keep fees leading up to licensure low to support those early in their careers. Fees for licensure candidates, architects, the exam, transmittals, and the certificate will all increase. Exam rescheduling fees will remain the same.

Stay tuned for more and check out NCARB's newly released 2024 NCARB By the Numbers!

Kerry Bartini AIA
Massachusetts Licensing Advisor to NCARB

STEPHEN SCHREIBER FAIA WINS NCARB AWARD: PRESIDENT'S MEDAL FOR DISTINGUISHED SERVICE

Stephen Schreiber FAIA, founding chair of the UMass Amherst Department of Architecture, and long-serving member of the WMAIA Board was recently awarded the National Council of Architectural Registration Board's (NCARB) highest honor, the President's Medal for Distinguished Service.

Schreiber was recognized for his outstanding leadership as president of the National Architectural Accrediting Board and his service to the council, the Massachusetts Board of Registration of Architects and Region 1 of the council.

"As president of the NAAB, Schreiber has led the organization through a period of adjustment and evolution," a press release from NCARB stated. "Schreiber has been a voice for collaboration, encouraging consideration of additional pathways to the profession of architecture."

"Schreiber has also been a dedicated NCARB volunteer for nearly three decades," the release continued. "In 2014, he was elected as the chair of NCARB's Region 1, before being elected as the Region 1 Director on NCARB's Board of Directors in 2017. During his tenure, he has volunteered for numerous committees and subcommittees related to the ARE. He has also served on the Audit, Broadly Experienced Architect, Education, Experience, Policy Advisory, and Regional Leadership committees. In addition to his service to NCARB, Schreiber has served as the president of the Association of the Collegiate Schools of Architecture (ACSA) and is a founding Chair of the Department of Architecture at the University of Massachusetts at Amherst."

The honorees were announced by 2023-2024 President Jon Baker FAIA, NCARB LEED AP, at the organization's 2024 Annual Business Meeting. Baker commended each of this year's recipients for their commitment to architectural regulation and NCARB's mission to protect the public's health, safety, and welfare.

Congratulations Steve!



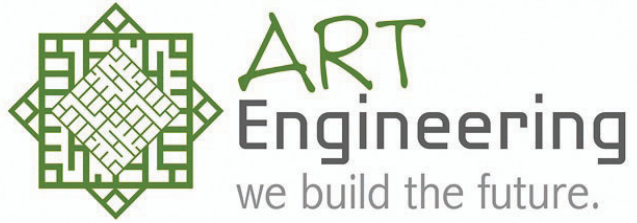
©2023 Marvin Lumber and Cedar Co., LLC.



Make space for original thinking.

You listen. You imagine. Then, you lead the way to bring it all to life. At Marvin, we understand what comes with "custom." That's why you'll find more than high-quality windows and doors with us. You'll meet seasoned experts with unwavering ingenuity to help you make space for what matters—discerning details, uncompromising quality, and creating more one-of-a-kind designs.

marvin.com/architectural-resources



38 Front Street FL 3 Worcester, MA 01608
t. 508-797-0333 f. 508-797-5130



Julie Waggoner
Affiliate WMAIA
jwaggoner@micablue.com
413-665-2280

Graphic Design
Web Design
Copy Writing
Photography



SERVING NEW ENGLAND AND BEYOND FOR OVER 25 YEARS, AND PROUD TO ANNOUNCE OUR NEW STATUS AS A MASSACHUSETTS CERTIFIED WOMEN BUSINESS ENTERPRISE

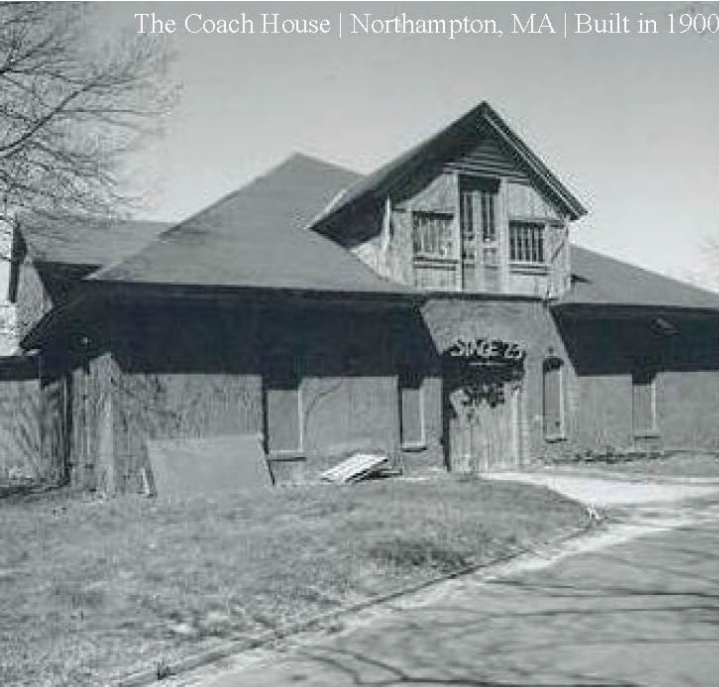


- Collaborating with Design and Construction teams, OTO provides
- Environmental Due Dilligence Studies
 - Geotechnical Studies and Assessments
 - Civil Engineering Support
 - Pre-Renovation Hazardous Materials Assessment and Testing
 - MCP Compliance and LSP Services
 - Construction Support and Oversight
 - LEEDS and IBC Indoor Air Quality Testing
 - and more.

HELLO@OTO-ENV.COM
413 . 788 . 6222
WWW.OTO-ENV.COM



Industrial Hygiene | Geotechnical | Environmental



The Coach House | Northampton, MA | Built in 1900



Historical Renovation | Completed in 2019

Design by Juster Pope Frazier Architects
Photo by CHODOS, Inc.



Building History Since 1897

www.dasullivan.com | 413-584-0310

Follow us online:

CITIZEN ARCHITECT WMAIA EXECUTIVE DIRECTOR LORIN STARR

Citizen Architect is a new periodic feature we are adding to WMAIANews. Back in the fall of 2008, in response to an AIA initiative to promote architects getting involved politically by serving in elected and appointed offices at the local level, we ran a profile on several of our citizen architects. We also found out – not a surprise – that our chapter had a very high percentage of members who have chosen to serve their cities, towns or region.

For our kickoff article we are featuring WMAIA Executive Director Lorin Starr.

Full disclosure – she’s not an architect (she is an interior designer) but she’s been hanging out with architects for a long time!

Where do you live?

Sunderland

In what way are you serving your community?

Currently I am a library trustee (elected), a member of the Capital Planning Committee and chair of the Village Center Committee (VCC) – the latter two are appointed positions. The VCC is charged with looking at long-term issues related to the town center including transportation, zoning, pedestrian access, and landscape. Previously I chaired the 120 North Main Street Committee, which helped create 33 units of affordable senior housing. I also chaired the building committee for the Sunderland Public Library – a \$2.5 million facility that opened in April 2004.

How has your design training prepared you for being active in your community?

Well, it’s certainly helped in building-related projects. Those projects are hard for people to conceive of, particularly at the beginning. So, understanding the steps that need to be taken to help bring a committee along through what always turns out to be a slow process is, I hope, beneficial. It’s always interesting to be on the other side of the table as the client instead of the design professional. In general, I think listening, adjusting and being able to work toward a consensus are useful skills in any circumstance.

What are your takeaways and/or advice regarding public service?

Democracy is messy. Municipal government takes a lot of compromise...but it’s worth it. I grew up in a large city where people are generally removed from government. Living in a small town you can have a significant impact on your community if you are willing to step up. It’s the difference between something happening to you and making something happen.

ENGINEERING VENTURES PC
Serving New York & New England

Camp Becket Dining Hall, Becket, MA

Creative Civil & Structural Engineering Solutions
(518) 205-9141 | www.engineeringventures.com



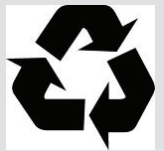
Tighe&Bond
Creative MEP engineering solutions for Western Massachusetts architects.

Project: River Valley Co-Op
Architect: Thomas Douglas Architects

www.tighebond.com

Sunderland Village Center showing the intersection of Rtes 116 and 47: senior housing (upper right) and library (left below ball field)

71 SOUTH MAIN STREET SUNDERLAND MASSACHUSETTS 01375



WMAIA COMMUNITY PROGRAMS: FALL PREVIEW 2024

WMAIA PROGRAMS WILL RESUME IN THE FALL!

Look for Code programs (sponsored by our COTE Committee), a Women in Architecture program, the Fall Films Series and SAVE THE DATE for our Annual Meeting and Awards program, which will be held Tuesday December 17, 2024.

CALL FOR ENTRIES COMING SOON

2024 is a design award year for WMAIA, in partnership with the Western Massachusetts section of the Boston Society of Architects.

The bi-annual Celebration of Architecture and Design Awards Program has long been a mainstay for WMAIA.

The program aims to encourage and recognize distinguished architectural and landscape design achievement and honor the project team, including the clients and consultants who work together to improve the built environment.

Participation in this program involves sharing your work at the WMAIA Annual Meeting on December 17, 2024, regardless of whether your project has been selected for an award.

Our aim is to increase awareness of the fine work produced within our community.

WE ARE ALWAYS LOOKING TO FEATURE YOUR GOOD CONTENT!

DO YOU HAVE A **BEFORE + AFTER** PROJECT YOU'D LIKE TO SHARE?

ARE YOU **AN ARCHITECT WHO MAKES ART?**
WE WOULD LOVE TO SEE YOUR WORK!

ARE YOU A **CITIZEN ARCHITECT?**
HOW DO YOU PARTICIPATE IN YOUR COMMUNITY?

WOULD YOU LIKE TO NOMINATE SOMEONE AS A **FEATURED ARTISAN?**
SEND US A LINK TO THEIR WORK!

DO YOU HAVE **NEWS TO SHARE** WITH THE WMAIA COMMUNITY?

DO YOU HAVE A GREAT PROJECT **IN THE WORKS?**
WE WOULD LOVE TO SEE YOUR RENDERING!

EMAIL EDITOR@WMAIA.ORG

A note about WMAIA's enews:

Are you receiving our regular enews?

The enews is sent several times a month and is used to communicate information about programs and other opportunities. If you are not receiving this information, please contact director@wmaia.org