

WM | AIA

WINTER  
2026



NEW SINGLE FAMILY HOME  
FRANCONIA, NEW HAMPSHIRE  
GRAPHITE STUDIO

R  
E  
T  
T  
E  
L  
S  
W  
E  
N

# NEWSLETTER OF THE WESTERN MASSACHUSETTS CHAPTER

## WELCOME LETTER FROM THE INCOMING WMAIA PRESIDENT



Happy New Year! Thank you for the opportunity to serve as the President of WMAIA in 2026.

First, I'd like to say thank you to our dedicated Board, Executive Director Lorin Starr, past President Kerry Bartini AIA, our active membership, and community partners for their continued commitment and support of our Chapter.

This year we'll focus our attention on the development of our existing committees -- Emerging Professionals, Women in Architecture, and Committee on the Environment -- by providing targeted programming and community engagement initiatives.

I am excited to announce that WMAIA will be hosting the New England Design Awards again this year. It's a wonderful event where we can come together with colleagues and see the breadth of work being done throughout the region.

WMAIA is here to support the diverse needs and interests of architects and designers in our area. As always, we appreciate hearing about ideas and topics that you may be passionate about, and we are dedicated to crafting programming geared to those specific interests.

Our membership numbers continue to be strong, and we are proud that our members are active participants and leaders in our local communities both in and outside of our industry. We are always looking to increase our presence on local, regional, and national boards and committees; if you have interest in offering your time, experience, and voice, please let us know.

As we usher in 2026, let us believe in our capacity to serve and lead by example. Let's continue to build a foundation for the future that we desire for our community through collaboration and resilience.

Sincerely,

Garrison Piers-Gamble Assoc. AIA

## COVER STORY: GRAPHITE STUDIO

### SINGLE FAMILY HOME

This home was designed by Graphite Studio of Amherst, Massachusetts, in collaboration with Garland Mill, who also built it. This all-electric home sits on a hillside near Franconia, NH, with a view over the whole Franconia Valley to Sugar Hill, NH.

The home is super-insulated and air tight, with ERV, heat pumps, and generously-sized triple-glazed windows to keep the heat in while letting in the outdoors.

Downstairs is an open plan for lounging and entertaining. In the basement, there is space for some epic North Country ping pong matches. Upstairs there are enough bedrooms for all the kids to stay and celebrate summer and winter holidays. A dog-trot breezeway links the garage and house, providing a perfect place to pile up skis or bikes. Completed in 2023.

General Contractor: Garland Mills

Photos: Fletcher Manley



**I** DO YOU HAVE A COVER STORY?  
EMAIL [EDITOR@WMAIA.ORG](mailto:EDITOR@WMAIA.ORG)

# OF THE AMERICAN INSTITUTE OF ARCHITECTS

## IN THIS ISSUE:

- ONE** LETTER FROM THE INCOMING WMAIA PRESIDENT
- ONE + TWO** COVER STORY: GRAPHITE STUDIO, NEW SINGLE FAMILY HOME
- THREE** WMAIA ANNUAL MEETING
- FIVE + SIX** AWARDS - NORTH ADAMS ADU COMPETITION WINNERS
- SEVEN + EIGHT** AWARDS - Ko-LAB ARCHITECTURE WINS N.E. ARCHITECTURE AWARD
- NINE** CITIZEN ARCHITECT MARK DUNN AIA
- TEN** SPOTLIGHT: EMERGING PROFESSIONAL, KYLIE HORNE
- ELEVEN** AWARDS - TULLIO INGLESE, AMHERST CHAMBER LIFETIME ACHIEVEMENT
- TWELVE** YOUR MEMBERSHIP BENEFIT: FIRM PROFILE ON WMAIA WEBSITE
- FOURTEEN** UPCOMING WMAIA + BCT PROGRAMS, EXHIBIT - SCOTT TULAY DRAWINGS

### THE WESTERN MASSACHUSETTS CHAPTER OF THE AMERICAN INSTITUTE OF ARCHITECTS

THE WMAIA NEWSLETTER IS PUBLISHED FOUR TIMES A YEAR. IT IS CIRCULATED TO ALL MEMBERS, ADVERTISERS AND SUBSCRIBERS. PLEASE DIRECT ALL NEWSLETTER CORRESPONDENCE TO [EDITOR@WMAIA.ORG](mailto:EDITOR@WMAIA.ORG). ARTICLES, PHOTOS, NOTICES OF EVENTS AND OTHER INFORMATION ARE WELCOME. OPINIONS EXPRESSED IN THE NEWSLETTER ARE NOT NECESSARILY THOSE OF THE WMAIA. THE EDITOR RESERVES THE RIGHT TO REJECT OR REVISE MATERIAL AS SPACE AND SUBJECTIVE OPINION PERMIT.

## COVER STORY CONTINUED: GRAPHITE STUDIO



### WMAIA

#### EXECUTIVE COMMITTEE

##### PRESIDENT:

GARRISON PIERS-GAMBLE  
ASSOCIATE AIA

##### PRESIDENT ELECT:

MOHAMED IBRAHIM AIA

##### TREASURER:

JODY BARKER AIA

##### SECRETARY:

CARYN BRAUSE FAIA

##### PAST PRESIDENT:

GARTH SCHWELLENBACH AIA

##### MEMBERS:

KERRY BARTINI AIA

WENDY BROWN AIA

KYLIE HORNE AIAS

ROBERT MARCALOW AIA

SHELBY PARRISH ASSOC. AIA

STEPHEN SCHREIBER FAIA

KRISTIAN WHITSETT AIA

##### EXECUTIVE DIRECTOR:

LORIN STARR

##### INTERIM NEWSLETTER EDITOR:

JULIE WAGGONER HON. WMAIA

##### EMERGING PROFESSIONALS

##### COORDINATOR

GARRISON PIERS-GAMBLE  
ASSOCIATE AIA

##### ARCHITECT LICENSING ADVISOR

KERRY BARTINI AIA

##### WEBSITE MANAGER

JULIE WAGGONER HON. WMAIA

##### SOCIAL MEDIA

SHELBY PARRISH ASSOC. AIA

##### FILM SERIES

VACANT

##### DISASTER ASSISTANCE COORDINATOR

LUDMILLA PAVLOVA-GILLHAM FAIA

##### COTE COMMITTEE CHAIR

JESSE SELMAN AIA

# WMAIA ANNUAL MEETING 2025



Nearly 70 people celebrated the season on December 10, 2025 at our Annual Meeting, a festive gathering at 33 Hawley Street/The Northampton Center for the Arts. Here's a recap of the evening's highlights:

## BUILDING TOUR

The evening began with a tour of 33 Hawley Street – a 2024 WMAIA Design Award recipient – designed by Bonham & Douglas Architects. Many thanks to Dan Bonham AIA, Thomas Douglas, Shoshanna Wineberg, and Scott Laidlaw AIA for sharing this fantastic project!

## ELECTION OF OFFICERS

We welcomed Garrion Piers-Gamble Associate AIA as our incoming president and Mohamed Ibrahim AIA as president elect. Jody Barker AIA and Caryn Brause FAIA are continuing as treasurer and secretary respectively. We thanked outgoing president Kerry Bartini AIA, outgoing board members Helen Fantini AIA and Hector Martinez AIA, and Rachael Sasha Cohen who stepped down as newsletter editor. We also thanked outgoing AIA Mass board member Dorrie Brooks AIA. Kerry Bartini AIA will join Thomas RC Hartman FAIA and Marc Sternick AIA as the three Western Mass representatives to the AIA Massachusetts Board.

## SCHOLARSHIPS

This year, in conjunction with AIA National and with the support of Pella, we were able to offer two \$1000 scholarships to M.Arch students and two \$500 scholarships to undergraduate students at UMass/Amherst. Submissions were screened by the UMass faculty and then submitted to the WMAIA board for review. Judging criteria was design excellence and clarity of presentation. This year's WMAIA scholarships were presented to: Samruddhi Gadekar, Javier Rodriguez, Kylie Horne and Bennett Cooper (all pictured below).

## NEWLY LICENSED ARCHITECTS

We were pleased to acknowledge the newly licensed architects in our chapter:

Brian Gillett	Douglas Lake AIA
Freya Johnsen AIA	Oliver Milot AIA
Jordan Kanter AIA	Katherine Tiarsmith AIA
Candace Kao	Zhaoqing Zhang AIA

Many thanks to our evening's sponsors: **Pella** and **Keiter!**



DO YOU HAVE A COVER STORY?

EMAIL EDITOR@WMAIA.ORG

# KEITER

Develop | Build | Manage

## Build your legacy with Keiter

► [LEARN MORE AT KEITER.COM](https://www.keiten.com)



Architectural  
Solutions

- Design & Performance Analysis
- Thermal Analysis
- Code Compliance
- Preliminary Design Drawings
- Installation Shop Drawings
- Take-off & Estimating Services
- Custom Extrusion Design
- Field Support
- CEU credits

Contact us:  
**Don Schabacker**  
dschabacker@pellasales.com

Visit our NEW showroom!  
**Pella Windows & Doors**  
69 Ashley Avenue  
West Springfield, MA 01089

INTERESTED IN ADVERTISING IN THE WMAIA NEWSLETTER?  
CONTACT [DIRECTOR@WMAIA.ORG](mailto:DIRECTOR@WMAIA.ORG) FOR MORE INFORMATION!

4

# AWARDS NORTH ADAMS ADU COMPETITION WINNERS

The WMAIA is pleased to announce that three Western MA designers received awards from the North Adams Partnership in their **Small & Smart ADU Design Challenge**, held in autumn 2025.

WMAIA member **Rob Marcalow AIA**, director of **Kuth Ranieri Architects'** Franklin, MA office, and **Rare Forms Design** of Easthampton, MA won **Best Overall ADU** designs in the

architects category. **Ruth Estien Garcia** of Umass won for her design in the student category.

Launched with support from an AARP Community Challenge Grant, the challenge asked participants to design Accessory Dwelling Units (ADUs)—small, flexible residential spaces located on the same property as a primary home, which offer a potential housing solution for aging in place, intergenerational



Our proposed ADU design is inspired by the Town of North Adams' unique context: its natural beauty, topography, history, and current cultural and artistic significance. "ADUNA," Accessory Dwelling Unit North Adams, is a site-specific, modified shed structure with a profile that evokes the surrounding mountainous context. Designed to maximize universal design principles, it ensures comfort and accessibility for all. The single-story, 778-square-foot dwelling features a no-step entry, wide doorways, and a plan layout that supports mobility and flexibility over time. Adaptable zones and a curtain element allow the living area to accommodate a workspace or guest suite, enabling residents to age in place and meet evolving needs.

Cost-effectiveness is achieved through a compact footprint, efficient framing, and the use of standardized, locally available materials. The roof form and modular construction streamline building time and reduce waste, while high-performance insulation and passive ventilation minimize operating costs. The design balances affordability with long-term durability and ease of maintenance.

Emphasizing sustainability and resilience, ADUNA integrates a light building envelope, energy-efficient electric appliances and window/door systems, provisions for future solar integration, and is NetZero-ready. Durable exterior cladding and permeable site surfaces reduce stormwater impact. Natural daylighting and cross-ventilation enhance livability while lowering energy consumption. The structure's permanent foundation ensures stability and climate resilience within the Berkshire environment.

Through innovation and aesthetics, ADUNA offers a modern interpretation of North Adams' vernacular—balancing contemporary simplicity with contextual sensitivity. The pitched roof and wood cladding reference local historic forms, while clean detailing and adaptable interior storage systems express contemporary design values. A kit-of-parts approach minimizes customization. North Adams' memorable autumnal foliage inspires the four-color palette. This compact dwelling is not only a model of sustainable, inclusive housing but also a refined architectural contribution to the city's evolving character.

NORTH ADAMS, MA		MASSACHUSETTS	
MEDIAN INCOME	MEDIAN HOUSING UNIT VALUE	MEDIAN INCOME	MEDIAN HOUSING UNIT VALUE
\$48,521	\$185,300	\$101,341	\$225,800

**Kuth Ranieri Architects**  
Organization: Kuth Ranieri Architects, LLP  
Contact: [marcalow@kuthranieri.com](mailto:marcalow@kuthranieri.com)  
Team: Liz Ranieri, FAIA | Rob Marcalow, AIA  
Britt Lindberg, FAIA | Rita John, RA | Carlos Esquivel



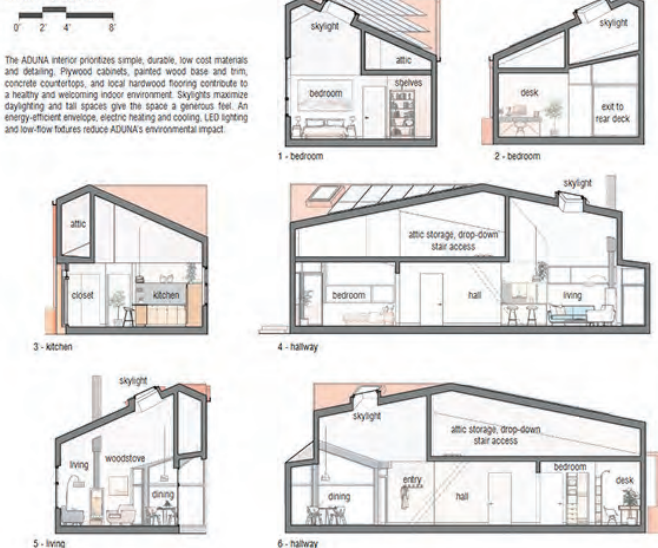
**At left, portions of the Kuth Ranieri ADU portfolio.**

The submission states: "Our proposed ADU design is inspired by the Town of North Adams' unique context: its natural beauty, topography, history, and current cultural and artistic significance. "ADUNA," Accessory Dwelling Unit North Adams, is a site-specific, modified shed structure with a profile that evokes the surrounding mountainous context.

Designed to maximize universal design principles, it ensures comfort and accessibility for all. The single-story, 778-square-foot dwelling features a no-step entry, wide doorways, and a plan layout that supports mobility and flexibility over time. Adaptable zones and a curtain element allow the living area to accommodate a workspace or guest suite, enabling residents to age in place and meet evolving needs.

Emphasizing sustainability and resilience, ADUNA integrates a tight building envelope."

## interior elevations



small & smart adu design challenge  
north adams, ma | fall 2025  
**Kuth Ranieri Architects**



**ENTER THE  
MASSACHUSETTS  
ADU CHALLENGE  
SUBMISSIONS DUE FEB. 27, 2026**

Submissions are officially open for the Massachusetts ADU Design Challenge announced by Governor Healy.

The challenge is part of a larger initiative designed to address the shortage of affordable housing in the Commonwealth. Massachusetts architects, builders, designers, contractors, and design-build teams practicing in the State of Massachusetts are invited to help solve that problem by creating high-quality, ready-to-use ADU plans.

**For more information  
visit <https://tinyurl.com/8sftf4>**



SHARE YOUR AWARDS ANNOUNCEMENTS WITH THE WMAIA!  
EMAIL [EDITOR@WMAIA.ORG](mailto:EDITOR@WMAIA.ORG)

NORTH ADAMS ADU COMPETITION WINNERS

living, and increasing local housing supply without changing neighborhood character.

Each of the architect winners received \$2500. Winning concept designs will be made available to the public at no cost, so homeowners can use concept plans to work with a general contractor to turn into building plans.

In addition to Kuth Ranieri Architects and Rare Forms Design, a winning submission was created by Anthony Adelman.

Julie Reilly, an advisory committee and judging panel member, said, “The panel was so impressed that we decided to create a student category to recognize and encourage this next generation of designers.”

The student winners each received \$500, made possible with generous support from Moresi Associates. Student winners were Ruth Estien Garcia, UMass; Ryleigh Holland, McCann Tech; and Grace Perrault, McCann Tech.



**Above, portions of the Rare Forms ADU portfolio.**

The submission states:

The Chestnut is a single-level 875 square-foot home designed for all stages and walks of life. Designed for accessibility with an option for full ADA-compliance, allowing for easeful aging in place. Universal Design elements are carried throughout the home, including zero-entry thresholds, ample storage closets, and ADA-optional kitchen cabinetry, creating accessibility for everyone.

Our Straw Structurally Insulated Panels (S-SIPs) achieve maximum embodied carbon, far exceeding modern building codes. The Chestnut results in net-negative carbon emissions (stored carbon) of -24605 Lbs CO<sub>2</sub>e (the equivalent of planting 13 fully-grown trees or removing 3 carbon-emitting vehicles from the road).

**At right, a portion of the ADU portfolio of UMass student Ruth Estien Garcia.**

The submission states:

Sustainable materials—such as stained wood siding and black shingles—were chosen for both cost-effectiveness and durability. The design blends modern principles of universal accessibility with large windows, clean lines, and contemporary colors, while also respecting the historic character of North Adams through traditional materials and familiar house forms.

**North Adams- ADU Dwelling**

By Ruth Estien Garcia

Phone: (413) 612-4613  
Email: Restien@umass.edu

A design created for the elderly residents of North Adams, this project offers a timeless and comfortable living environment. It features open spaces and a deck designed for long afternoons spent enjoying tea and fresh air. Sustainable materials—such as stained wood siding and black shingles—were chosen for both cost-effectiveness and durability.

The design blends modern principles of universal accessibility with large windows, clean lines, and contemporary colors, while also respecting the historic character of North Adams through traditional materials and familiar house forms.



# AWARDS

## Ko-LAB ARCHITECTURE WINS NE DESIGN AWARD



from left: Kerry Bartini AIA, 2025 WMAIA President; Lorin Starr, WMAIA Executive Director; Ray Mann AIA and Naomi Darling AIA of Ko-LAB Architecture.

The Annual New England Architecture Awards celebrate architecture by New England architects anywhere in the world and architecture by other architects within the New England region. The 2025 New England Architecture Awards were hosted by AIA New Hampshire with awards presented in Portsmouth on October 24th. Among the winners was a **citation for the Sunderland Kayak Kiosk and Bathroom Renovation by Western Massachusetts firm Ko-LAB Architecture (Naomi Darling AIA and Ray Mann AIA)**. This project was also recognized with a citation in WMAIA's 2024 Design Awards. Here's an in depth look at the project.

The Sunderland Riverside Park improvements were initiated by the director of the Sunderland Public Library who wanted to provide patrons with the ability to check out kayaks and enjoy access to the Connecticut River.



Soliciting Community Input at an Evening Presentation

Over time, the project evolved to include not only a place for the kayaks, but a storage area to replace the existing shed for the park landscaping and maintenance equipment, storage for Sunderland Youth Baseball, and a renovation of the existing restroom facilities. Begun in 2019, the Kayak Storage project was initially assigned as a short studio exercise for senior undergrads. The student proposals were presented to the public at a library open house and the design team integrated community input at the start of design. The project ultimately combined the kayak storage program into a 800-square-foot pavilion with a maintenance and storage shed at the rear and a roof canopy providing a shaded area for people to picnic or watch baseball games.

The three kayak storage boxes double as seating and picnic tables between the boxes, providing a place for community gathering. The 224-square-foot bathrooms were originally built in the 1960s. Keeping the existing foundation and framing, the interior and exterior finishes and fixtures were replaced and the privacy screen on the exterior was designed using a similar design vocabulary to the Kayak Kiosk.

Both projects were a community effort funded by the Town of Sunderland with CPA (Community Preservation Act) funds with additional ARPA (American Rescue Plan Act) funds for the Kayak Kiosk. The grant application and oversight were undertaken by the public library with support from the Recreation Department and Sunderland Youth Baseball. The initial budget for both projects was established pre-covid and when funds ultimately fell short, the design team and community volunteers worked together to complete the picnic tables and screens.



Aerial view of Riverside Park; Kayak Kiosk in foreground left, restrooms at back right  
Architectural photos: Sean Kernan



SHARE YOUR AWARDS ANNOUNCEMENTS WITH THE WMAIA!  
EMAIL EDITOR@WMAIA.ORG

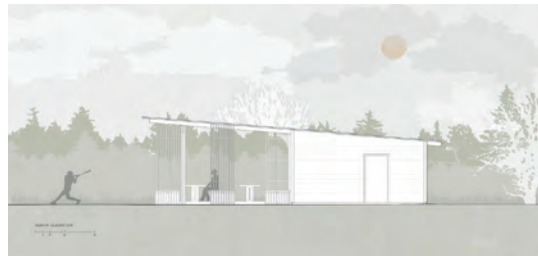
Ko-LAB ARCHITECTURE WINS NE DESIGN AWARD



L: North side of the Kayak Kiosk with door into the maintenance area ajar.



R: South side of Kiosk showing storage for the life jackets and paddles. Restroom is beyond the blue dugout.



Elevations of Kayak Kiosk

The 2026 New England Design Awards will be hosted by WMAIA.

2026 is also a

WMAIA Chapter Design Awards year.

Watch this newsletter and your enews for more information!

# Barr & Barr

BUILDING WITH INTEGRITY SINCE 1927

Honesty • Integrity • Accountability • Passion

**New England Office:**

446 Main Street, Suite 1604

Worcester, MA

T: 508.879.5750

[www.barrandbarr.com](http://www.barrandbarr.com)



Visit our site!

**"YOUR LEGACY IS WHAT YOU'VE BUILT."**

- JOSEPH A. BARR

Pictured: Marian Fathers Monastery - Stockbridge, MA

Healthcare • Educational • Life Sciences/Research • Commercial • Cultural & Historical • Parking Structures

Northeast • New England • Mid-Atlantic • Southeast



# CITIZEN ARCHITECT

MARK T. DUNN AIA

## Where do you live?

I've lived in Hadley for 21 years, on and off since 1997.

## In what way are you serving your community?

I'm in my second term on the Planning Board. Due to that role I represent the Planning Board on the Community Preservation Committee, and I chair the Smart Growth Steering Committee which is working with the Pioneer Valley Planning Commission to draft a 40R Zoning Overlay District bylaw to encourage more housing development along public transit routes for Town Meeting to vote up or down.

## How has your design training prepared you for being active in your community?

In architecture school we learned to listen to our professor's expectations and then develop a suitable design. In practice we learn to listen to our clients to determine their needs and desires. We envision a desirable solution and then work to develop and illustrate that solution for their review and ultimate acceptance.

When serving on a Planning Board one is expected to listen to proposed designs and determine where they do or do not comply with the municipality's bylaws and design guidelines. So I feel that this is a process I have been familiar with since college, except now I am in a role more like that of the faculty instructor.

Decades of listening, interpreting and communicating make this a relatively innate skill (as long as I'm familiar with the town and state laws and bylaws). The trap I repeatedly try to avoid is the natural response to design the solution when we are reviewing design submittals. My responsibility there is to steer the applicant away from what the town does not want nor accept.

On the creative side, I do try to work with our Planning Board to re-evaluate and perhaps re-imagine some of our design requirements from time to time.

The world we live in is constantly evolving so a static set of guidelines will not be able to keep up with the changing times. Solar energy systems, marijuana dispensaries, battery energy storage systems and the new state mandate to reduce restrictions on acceptance of accessory dwelling units are some examples of recent or current topical issues that were not anticipated when our bylaws were adopted. What will keep us on our toes next – flying cars?



**Tighe & Bond**  
Partnership with purpose

**SERVICES**

- Site/Civil Design
- M/E/P/FP Engineering
- Structural Engineering
- Environmental Consulting
- Landscape Architecture

TIGHEBOND.COM



**WRIGHT**  
BUILDERS INC.

413.586.8287

WRIGHT-BUILDERS.COM

48 BATES STREET  
NORTHAMPTON, MA 01060



CELEBRATING 50 YEARS AS WESTERN NEW ENGLAND'S  
LEADER IN SUSTAINABLE AND HIGH-PERFORMANCE  
RESIDENTIAL, COMMERCIAL & INSTITUTIONAL CONSTRUCTION



ARE YOU A CITIZEN ARCHITECT?

EMAIL EDITOR@WMAIA.ORG

# SPOTLIGHT: EMERGING PROFESSIONAL

## KYLIE HORNE



### When did you know you wanted to be an architect?

In fifth grade! Architecture brings together the arts, math, and science in a way that feels both expressive and practical. Even before I understood what architecture was, I was constantly building with LEGOS, playing Minecraft and other design-based games, and later, throughout high school, channeling that creativity into

painting and illustrating architectural spaces. As an adult in this field, I can express creativity while also developing practical skills like problem solving, critical thinking, and adaptability.

### Do you feel school prepared you for the office?

Yes, it prepared me to think more conceptually and creatively in terms of design approaches and learning how to adapt through feedback from my peers and professors. School gives a strong overall foundation in how different projects are influenced by different constraints. I also think that I've benefitted from experience in the project management and construction side: navigating through challenges, and adapting to real-world constraints like budgets, schedules, and client needs.

### Why is licensure important to you?

I am very goal oriented, and having a clear path to work toward helps keep me motivated. And it represents both growth and commitment to the profession. It also matters to me because it means opening up opportunities to take on greater roles as I move forward in my career.

### Where are you on the path to licensure?

I have logged approximately 500 AXP hours, primarily concentrated in the Project Management and Construction & Evaluation experience areas, through my internship with Amherst College's Planning, Construction, and Design Department.

### What's something cool that you're working on right now?

I am participating in a Winter Exchange at Yonsei University in Seoul, South Korea, where I am taking an accelerated three-week intensive Korean language course. In addition to developing my language skills, I have been visiting prominent architectural sites. I will also be participating in Gensler's SPARK program, a 4-month long engagement program to introduce different design concepts and support architecture students.

### What's on your playlist?

I am listening to a lot of Electronic and R&B music. My favorite song for the past few months has been "Snap My Finger" by Kaytranada.

**ENGINEERING VENTURES PC**  
Serving New York & New England

Camp Becket Dining Hall, Becket, MA

Creative Civil & Structural Engineering Solutions  
(518) 205-9141 | [www.engineeringventures.com](http://www.engineeringventures.com)

Integrated Disciplines.  
One Partner.

Hill  
engineers  
architects  
planners

70+ years of integrated  
Architecture, Engineering, and  
Planning expertise on your project.

# AWARDS

## TULLIO INGLESE RECEIVES LIFETIME AWARD

Amherst architect Tullio Inglese received a **Lifetime Achievement Award** from the Amherst Chamber of Commerce, during their 2025 A+ Awards ceremony, for his lifelong work designing ecological architecture and teaching younger generations.

Tullio was born in 1938 in Roccamanico, a remote mountain village in central Italy, and emigrated to America in 1947. He received his education at Wentworth Institute of Technology, after which he served in the army, and then attended the University of Oklahoma, and MIT.

Tullio is principal architect with his firm, TIA Architects, and is the director of Nacul Center for Ecological Architecture, founded in 1972. He has worked with more than 600 interns on designs of sustainable buildings, cooperative housing, eco-cities, solar houses, and socially responsible projects for non-profit organizations, and has taught courses on Ecological Architecture at Wentworth Institute, the Boston Architectural College, and Smith College.

Tullio is married to Judith Inglese, a ceramic mural artist and children's book illustrator. They live in a Queen Truss House they built in 2000. They have five children, including three adopted



from Cambodia, Vietnam, and the U.S.. He has worked since 1972 in his studio—a renovated brick chapel in Amherst, MA.

### A WHOLE NEW APPROACH TO ENGINEERING DESIGN

LN Consulting provides building design solutions focused on health and sustainability, forged in analysis and technology, in collaboration with our clients and the communities they serve. Our consulting firm delivers intelligent, forward-thinking solutions that address building resiliency, energy optimization, and occupants' safety.



(413) 776-9580  
Northampton, MA  
(802) 655-1753  
Burlington, Vermont  
[LNconsulting.com](http://LNconsulting.com)



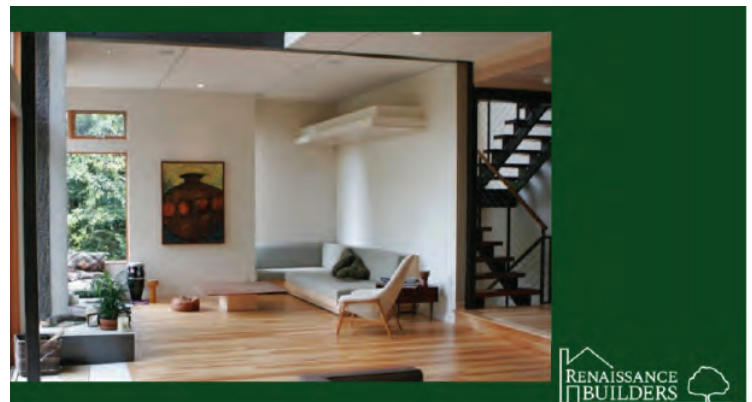
Julie Waggoner  
Honorary WMAIA  
[jwaggoner@micablue.com](mailto:jwaggoner@micablue.com)  
413-665-2280

Graphic Design  
Web Design  
Copy Writing  
Photography



**ART**  
Engineering  
we build the future.

38 Front Street FL 3 Worcester, MA 01608  
t. 508-797-0333 f. 508-797-5130



INTERESTED IN ADVERTISING IN THE WMAIA NEWSLETTER?  
CONTACT [DIRECTOR@WMAIA.ORG](mailto:DIRECTOR@WMAIA.ORG) FOR MORE INFORMATION!

# MEMBERSHIP BENEFIT YOUR FIRM PROFILE ON WMAIA WEBSITE

As a service to WMAIA member firms, we post short firm profiles on the WMAIA website.

These are mini websites, featuring a 150-word description, your firm's name and contact information, a link to your website, and four photos of your recent work.

You may send photo and text updates to [jwaggoner@micablue.com](mailto:jwaggoner@micablue.com) on a quarterly basis.

If you have a profile and would like to update it, do so now.

When people ask us where to find an architect in Western Massachusetts, this website is where we send them.

**So take advantage of this benefit!**

The Western Massachusetts Chapter of The American Institute of Architects

**AIA Western Massachusetts**    About   Members   Committees   Advocacy & Legislation   News   Events   Resources   Contact

### Bonham & Douglas Architects

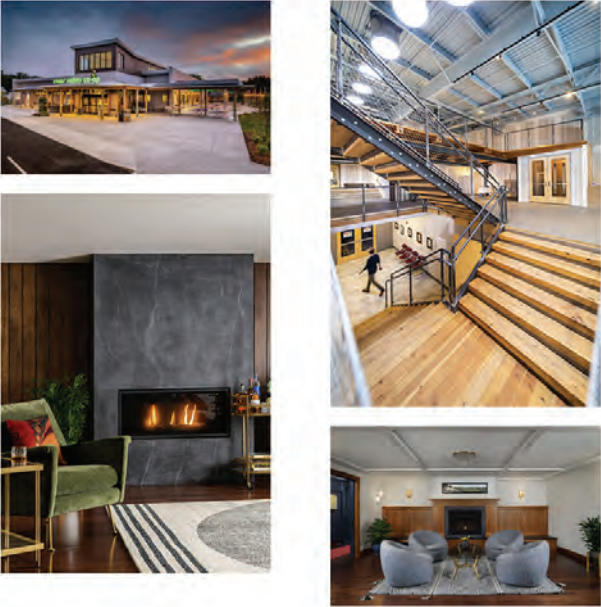
Beyond the literal balance of building materials and structure, is the balance of history, people, institutions, buildings and neighborhoods.

Our core belief is that architecture has the power to transform our lives. Most of our lives are spent in designed spaces, which can either inspire or limit us. Our homes, our offices, our neighborhoods and our cities help to shape who we are.

Every building project involves change. And we strive to create positive change – change for our clients businesses, brands and homes – and change for our society and generations to come.

Bonham & Douglas Architects  
196 Pleasant Street  
Northampton, MA 01060  
413.585.0641  
[www.bd-arc.com](http://www.bd-arc.com)

[Back to Member Profiles page](#)



*Building History Since 1897*

[www.dasullivan.com](http://www.dasullivan.com) | 413-584-0310

Follow us online:   

HAVE YOU ADDED OR UPDATED YOUR FIRM PROFILE ON WMAIA.ORG?

CONTACT [JWAGGONER@MICABLUE.COM](mailto:jwaggoner@micablue.com)

# 12



SERVING NEW ENGLAND AND BEYOND FOR OVER 25 YEARS, AND PROUD TO ANNOUNCE OUR NEW STATUS AS A MASSACHUSETTS CERTIFIED WOMEN BUSINESS ENTERPRISE



Collaborating with Design and Construction teams, OTO provides

- Environmental Due Dilligence Studies
- Geotechnical Studies and Assessments
- Civil Engineering Support
- Pre-Renovation Hazardous Materials Assessment and Testing
- MCP Compliance and LSP Services
- Construction Support and Oversight
- LEEDS and IBC Indoor Air Quality Testing
- and more.

HELLO@OTO-ENV.COM  
413 . 788 . 6222  
WWW.OTO-ENV.COM



Industrial Hygiene | Geotechnical | Environmental



Modern design.  
Advanced performance.

Bring authentic modern design, precision engineering, and industry-leading innovation to your clients with **Marvin Modern** windows and doors. High-Density Fiberglass provides maximum material strength, thermal performance, and expansive glass to help achieve your vision.

For expert tools, resources, and support, visit [marvin.com/pros](http://marvin.com/pros).

“The thin profiles really helped us create this blurring of whether you are inside or outside.”

— Paul Lewandowski,  
Architect, Paul Designs Project

©2025 Marvin Lumber and Cedar Co., LLC.

# CONTINUING EDUCATION UPCOMING WMAIA PROGRAMS

## The BCT PROGRAM SERIES BEGIN FEBRUARY 9

For more information and to register watch for your enews or visit [wmaia.org](http://wmaia.org)

### APPLIED CONSTRUCTION FUNDAMENTALS

Monday February 9, 2026 | 4:00-5:15PM

Hybrid – ZOOM or in person at 170 Design Building, UMass  
IHSW Approval Pending

This program covers applied construction fundamentals, using specific operational areas and project examples using the Arch Energy project at UMass as an example.

### CURIOSITY, COLLABORATION, AND CARBON-CONSCIOUS THINKING

Monday March 2, 2026 | 4:00-5:15PM

Hybrid – ZOOM or in person at 170 Design Building, UMass  
IHSW Approval Pending

Michael Gryniuk, P.E., founder and principal of CORA Structural, will share his wealth of structural engineering expertise and experience, and extensive contributions to the rapidly developing concept of embodied carbon tracking of structural systems.

### CONSTRUCTION CHALLENGES AND SOLUTIONS IN POLAR ENVIRONMENTS

Monday March 30, 2026 | 4:00-5:15PM

Hybrid – ZOOM or in person at 170 Design Building, UMass  
IHSW Approval Pending

This lecture will feature David Malpas, a construction manager currently working in Antarctica. Mr. Malpas will detail the unique challenges and innovative solutions involved in polar construction environments.

### TOOLS OF THE TRADE FOR BUILDING DIAGNOSTICS

Monday April 27, 2026 | 4:00-5:15PM | Hybrid – ZOOM or in person at 170 Design Building UMass | IHSW Approval Pending

How do you go about diagnosing a sick, leaky, dripping, humid, dry, or uncomfortable building? Join Mr. Ueno for an overview of the tools that he commonly uses in his diagnostic work on building enclosures and mechanical systems.

## SAVE THE DATE- THURSDAY, APRIL 30, 2026 AT 4PM!

WMAIA Women in Architecture presents a tour of the UMass Orchard Hill Pavilion with architect Sigrid Miller Pollin FAIA.

# EXHIBITION SCOTT TULAY, OLVER DESIGN BUILDING GALLERY

## SCOTT TULAY MERGE



Scott Tulay, an architect and former member of the WMAIA, is exhibiting his new work "Merge" at the UMass Olver Design Building Gallery from February 5 - March 7, 2026.

**The opening reception is February 5 from 5:00 - 6:30 p.m.**

Scott has an undergraduate degree in Art History from Tufts University and a graduate degree in Architecture from the Massachusetts Institute of Technology.

His work is in private and public collections, including the Tchoban Museum, the MIT Museum, Mount Holyoke College Art Museum, the Smith College Museum of Art and MGM Resorts International.

UMASS OLVER DESIGN BUILDING GALLERY

2026 FEB 5th - MAR 7th

551 NORTH PLEASANT STREET • AMHERST, MA  
GALLERY HOURS: 9-4 M THRU F • CLOSED WEEKENDS

OPENING RECEPTION - FEB 5th - 5:00-6:30  
SUPPORTED BY THE UMass ARTS COUNCIL



WE WILL POST EXHIBITS THAT MAY BE OF INTEREST TO WMAIA MEMBERS, HERE AND ON [WMAIA.ORG](http://WMAIA.ORG)

CONTACT [DIRECTOR@WMAIA.ORG](mailto:DIRECTOR@WMAIA.ORG)

# 14

71 SOUTH MAIN STREET SUNDERLAND MASSACHUSETTS 01375



OUR SUPPORTERS

Thanks to WMAIA's 2025-2026 Sponsors and Corporate Affiliate Members!

COPPER SPONSORS



NICKEL SPONSOR



BRONZE SPONSORS



CORPORATE AFFILIATE MEMBERS, PROGRAM SPONSORS & ADVERTISERS:

The Berkshire Design Group Inc. • Brown & Brown • Dodson & Flinker Inc • Hill Engineers, Architects & Planners  
Lexington Group Inc. • Engineering Design Associates • MicaBlue Creative • MJ Moran. • National Vinyl LLC •  
Olander Brick • Ryan Hellwig PE • Souliere & Zepka Construction Inc. • Sierra Pacific • Tighe & Bond

Check **WMAIA enews** to see more information about upcoming WMAIA programming!

**Are you receiving our regular enews?**

The enews is sent several times a month and is used to communicate information about programs and other opportunities. Be sure we have your correct email address! If you are not receiving this information, please contact [director@wmaia.org](mailto:director@wmaia.org)